

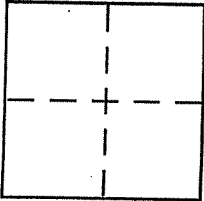
APN 188-150-55

CORNER RECORD

Document Number 2001-55602
County of MARIN, California

City of BOLINAS

Brief Legal Description LANDS OF BOLINAS CEMETERY CORP AS DESCRIBED IN DOC 2001-55602



CORNER TYPE

Government Corner Control
Meander Property
Rancho Other
Date of Survey 8/1/08

COORDINATES (Optional)

N. _____
E. _____
Zone _____ NAD27 NAD83
NAD83 Epoch _____
Elev. _____
Vert. Datum: NGVD29 NAVD88
Meas. Units: Metric Imperial

Corner - Left as found Found and tagged Established Reestablished Rebuilt

Identification and type of corner found: Evidence used to identify or procedure used to establish or reestablish the corner:

AS SHOWN ON SHEET 2

A description of the physical condition of the monument as found and as set or reset:

AS SHOWN ON SHEET 2

SURVEYOR'S STATEMENT

This Corner Record was prepared by me or under my direction in conformance with

the Land Surveyor's Act of 10/10/00

Signed [Signature] P.L.S or R.C.E. No. 5814

COUNTY SURVEYOR'S STATEMENT

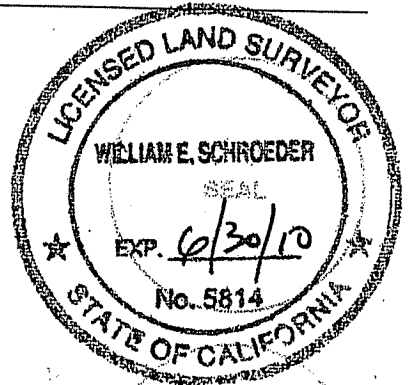
This Corner Record was received FEBRUARY 8, 2010

and examined and filed FEBRUARY 24, 2010

Signed [Signature] P.L.S or R.C.E. No. 7128

Title COUNTY SURVEYOR

County Surveyor's Comment _____

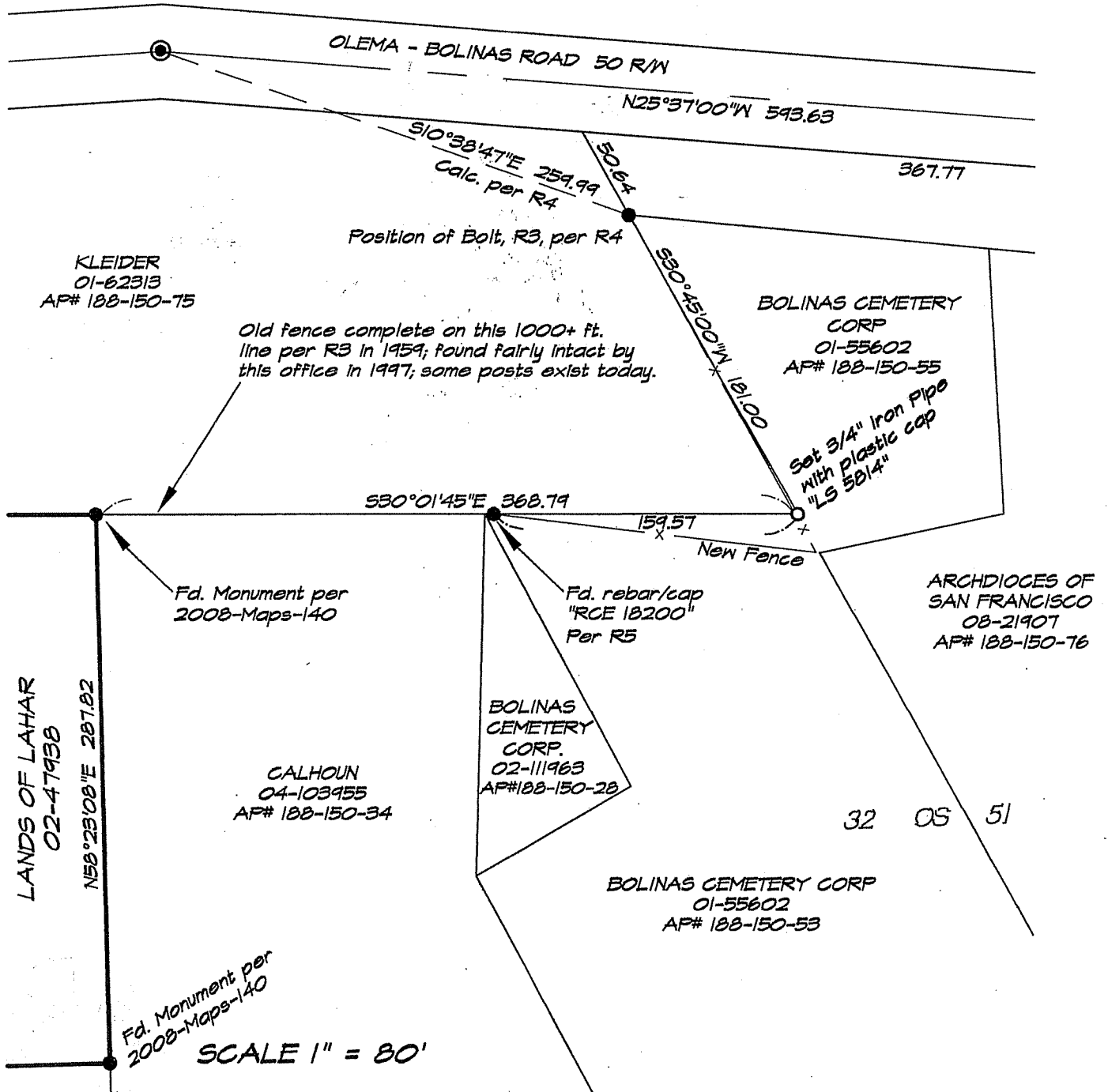


R3 = OJW Survey #16499 June 1959

R4 = 14-03-38

R5 = 32-05-51

OJW refers to the firm "Oglesby, Jacobs & Wickham;" No. 16499 the records of that firm are on file with this office.



All distances are in feet and decimals thereof.