

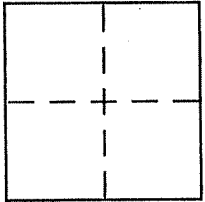
CORNER RECORD

Document Number APN 188-100-36

City of Bolinas / Dogtown

County of Marin, California

Brief Legal Description Parcel 2 Per 2008 Pm 215



CORNER TYPE

Government Corner Control
Meander Property
Rancho Other
Date of Survey 02-04-11

COORDINATES (Optional)

N. _____
E. _____
Zone _____ NAD27 NAD83
NAD83 Epoch _____
Elev. _____
Vert. Datum: NGVD29 NAVD88
Meas. Units: Metric Imperial

Corner - Left as found Found and tagged Established Reestablished Rebuilt

Identification and type of corner found: Evidence used to identify or procedure used to establish or reestablish the corner:

See pages 2-9

A description of the physical condition of the monument as found and as set or reset:

See pages 2-4

SURVEYOR'S STATEMENT

This Corner Record was prepared by me or under my direction in conformance with the Land Surveyor's Act on 2115 2011

Signed [Signature] P.L.S or R.C.E. No. 6784



COUNTY SURVEYOR'S STATEMENT

This Corner Record was received FEBRUARY 16, 2011

and examined and filed MARCH 8, 2011

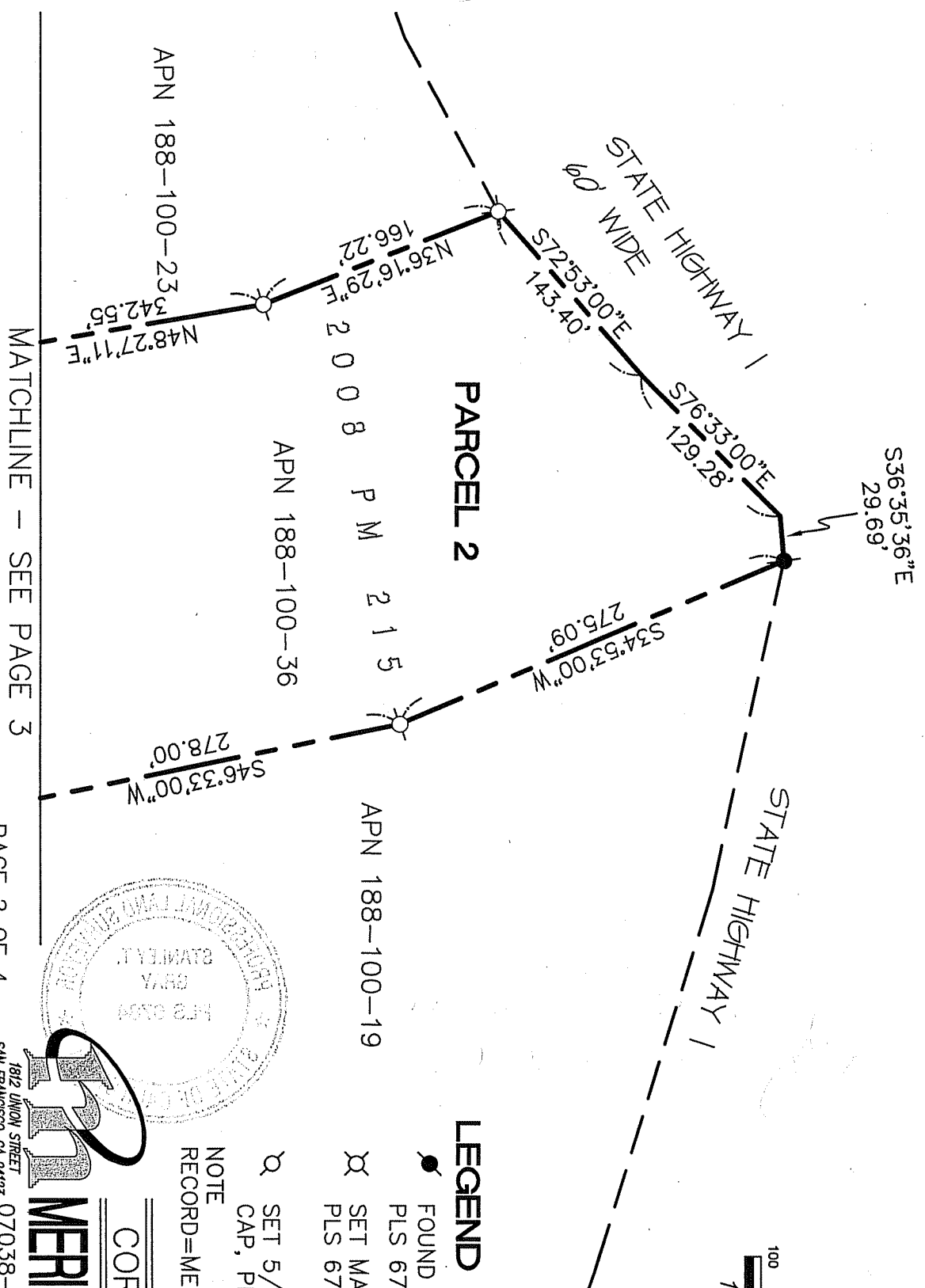
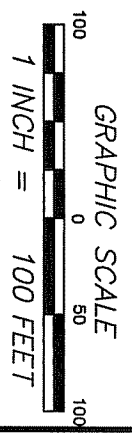
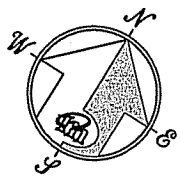
Signed [Signature] P.L.S or R.C.E. No. 7128

Title COUNTY SURVEYOR



County Surveyor's Comment _____

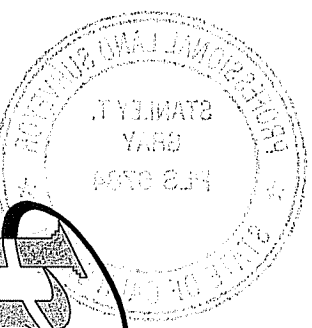
REFERENCE
 [A] "PARCEL MAP, LANDS OF BUCKENMEYER..." FILED FOR RECORD DECEMBER 22, 2008 IN BOOK 2008 OF PARCEL MAPS, AT PAGE 215, MARIN COUNTY RECORDS.



LEGEND

- FOUND 5/8" REBAR AND CAP, PLS 6784 PER [A]
- ⊗ SET MAG NAIL AND WASHER, PLS 6784

- ⊗ SET 5/8" REBAR WITH CAP, PLS 6784
- NOTE
 RECORD=MEASURED



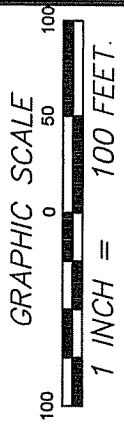
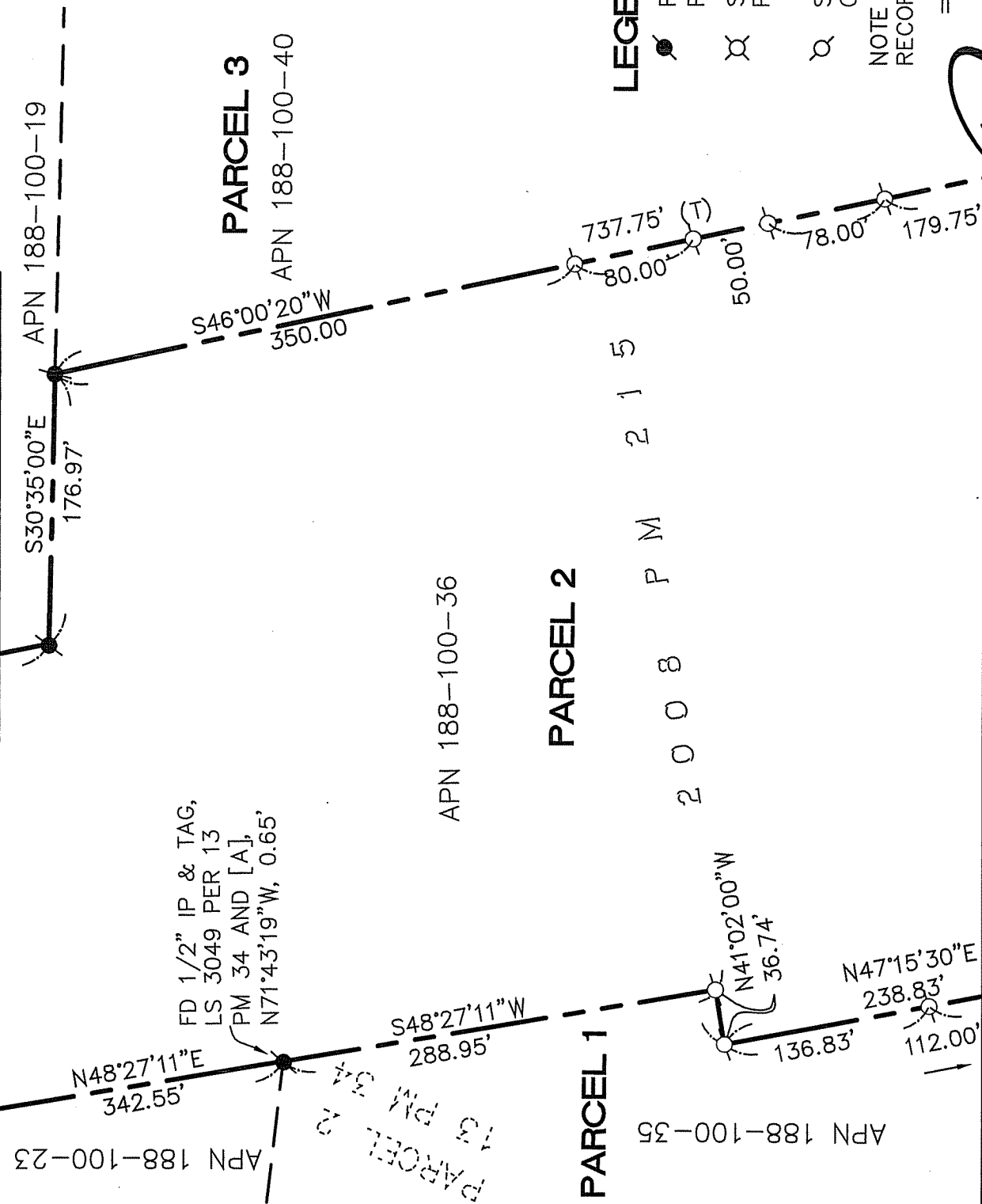
CORNER RECORD

Meridian Surveying, Inc.

1812 UNION STREET
 SAN FRANCISCO, CA 94123
 (415) 440-4131
 info@meridiansurvey.com

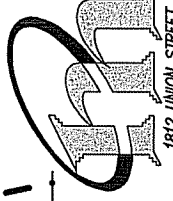
777 GRAND AVENUE, SUITE 202
 SAN RAFAEL, CA 94901
 (415) 456-6450

MATCHLINE - SEE PAGE 2



LEGEND

- ⊙ FOUND 5/8" REBAR AND CAP,
PLS 6784 PER [A]
 - ⊗ SET MAG NAIL AND WASHER,
PLS 6784
 - ⊙ SET 5/8" REBAR WITH
CAP, PLS 6784
- NOTE
RECORD=MEASURED

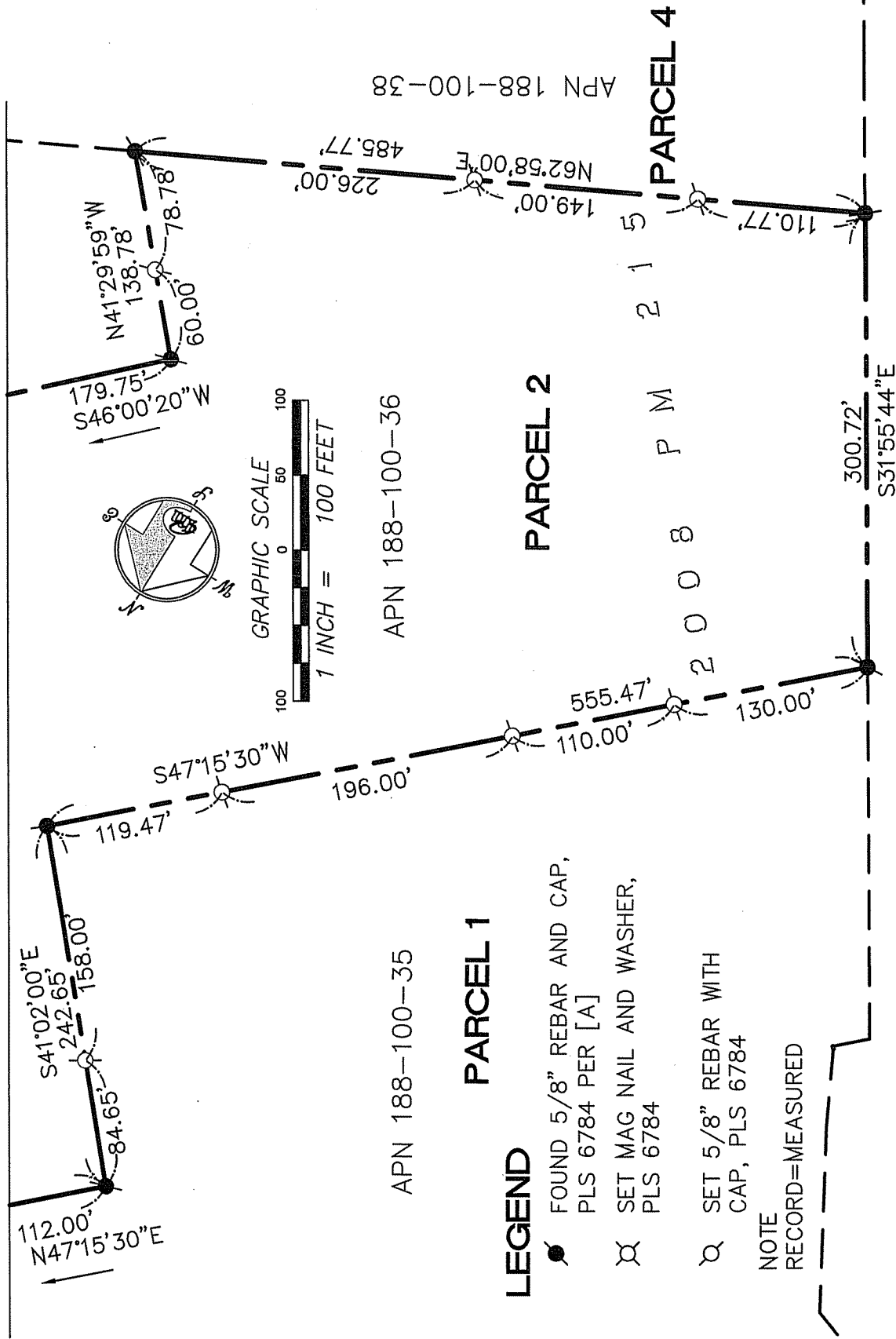


CORNER RECORD
MERIDIAN SURVEYING INC.
1812 UNION STREET
SAN FRANCISCO, CA 94123
(415) 440-4131
info@meridiansurvey.com

777 GRAND AVENUE, SUITE 202
SAN RAFAEL, CA 94901
(415) 456-6450

MATCHLINE - SEE PAGE 4

MATCHLINE - SEE PAGE 3



PARCEL 1

APN 188-100-35

LEGEND

- FOUND 5/8" REBAR AND CAP,
PLS 6784 PER [A]
- ⊗ SET MAG NAIL AND WASHER,
PLS 6784
- ⊙ SET 5/8" REBAR WITH
CAP, PLS 6784

NOTE
RECORD=MEASURED

PARCEL 2

APN 188-100-36

PARCEL 4

APN 188-100-38

APN 188-090-13



CORNER RECORD

MERIDIAN SURVEYING ENGINEERING, INC.
 777 GRAND AVENUE, SUITE 202
 SAN RAFAEL, CA 94901
 (415) 466-6460

1812 UNION STREET
 SAN FRANCISCO, CA 94123
 (415) 440-4131
 info@meridiansurvey.com