

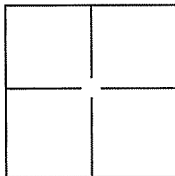
CORNER RECORD

Document Number A.P.N. 188-090-13

City of Bolinas

County of Marin, California

Brief Legal Description Lands of Moritz and Heyman, 5675 State Route 1, 2008 PM 215.



CORNER TYPE

Government Corner Control
 Meander Property
 Rancho Other

Date of Survey 11 April 2012

COORDINATES(Optional)

N. _____
 E. _____
 Zone _____ NAD27 NAD83
 NAD83 Epoch _____
 Elev. _____
 Vert. Datum: NGVD29 NADV88
 Meas. Units: Metric Imperial

Corner - Left as found Found and tagged Established Reestablished Rebuilt

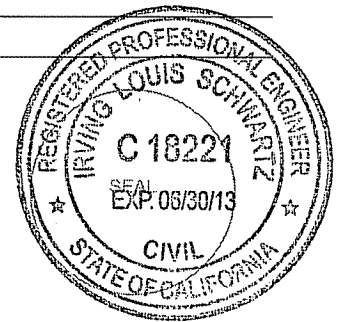
Identification and type of corner found: Evidence used to identify or procedure used to establish or reestablish the corner:
Found 3/4" Iron Pipe and Brass Nail and Tag, "RCE 8181" as shown on 13 P.M. 34 and Found 1/2" Rebar and Yellow Cap "PLS 6784" (2) as shown on 2008 PM 215.

A description of the physical condition of the monument as found and as set or reset:
Set 3/4" Iron Pipe and Yellow Cap along Northeasterly line (4), Set Nail and Tag in West Side of 50" Bay Tree on Northeasterly line and Set Nail and Tag in Southwest Side of 22" Oak Tree on Northeasterly line, See Exhibit A.

SURVEYOR'S STATEMENT

This Corner Record was prepared by me or under my direction in conformance with the Land Surveyor's Act on JUNE 6, 2012.

Signed [Signature] P.L.S. or R.C.E. No.: 18221



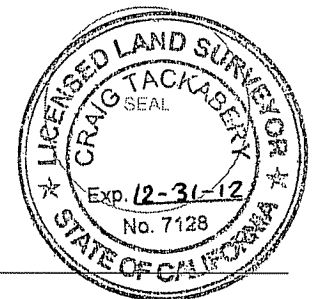
COUNTY SURVEYOR'S STATEMENT

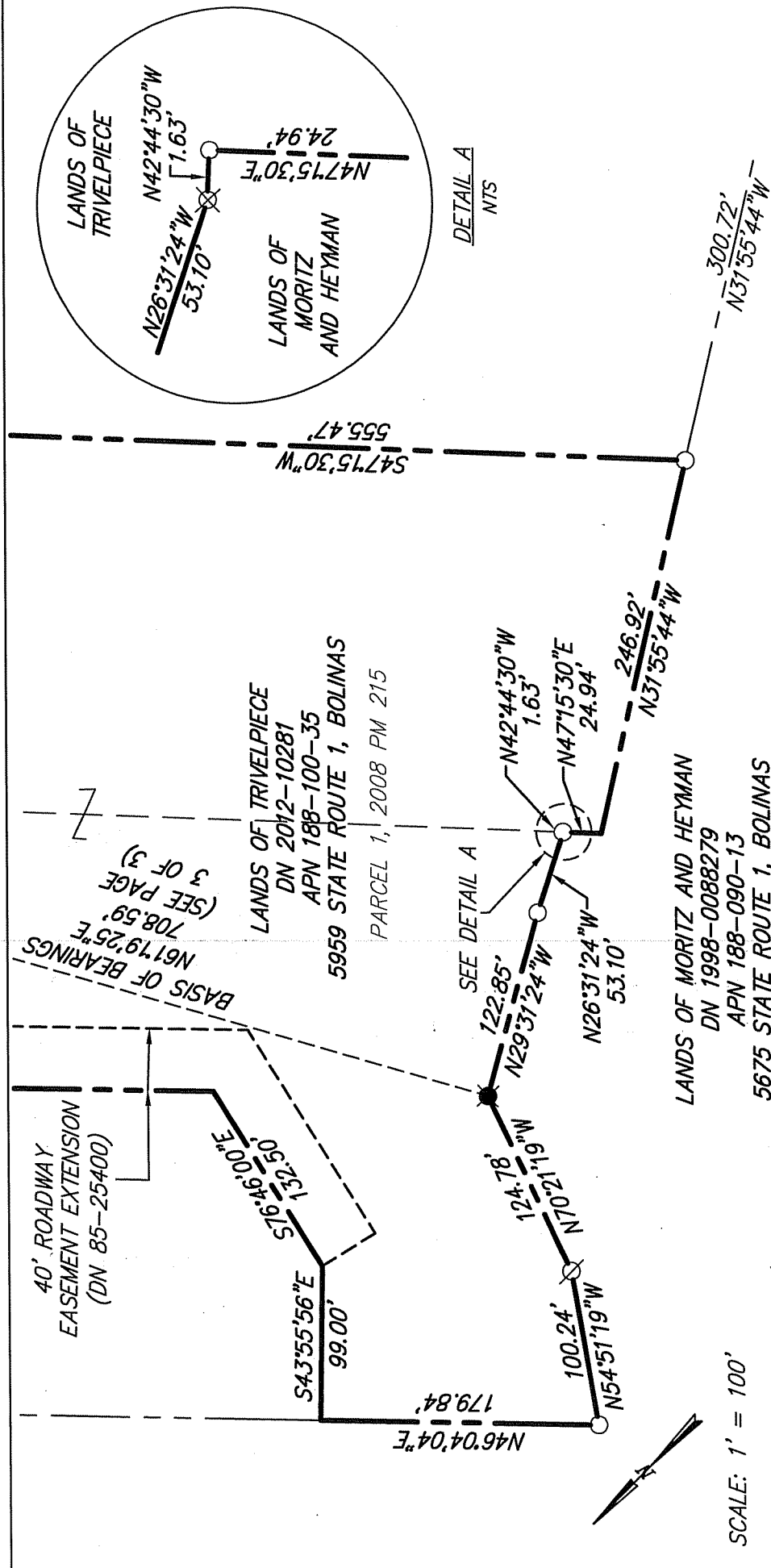
This Corner Record was received JUNE 8, 2012 and examined and filed JUNE 14, 2012.

Signed [Signature] P.L.S. or R.C.E. No.: 7128

Title COUNTY SURVEYOR

County Surveyor's Comment _____





NOTE:
 ALL DIMENSIONS AND BEARINGS
 SHOWN HEREON ARE PER 13 P.M. 34 &
 2008 P.M. 215.

- LEGEND**
- SET 3/4" IRON PIPE & YELLOW CAP "R.C.E. 18221"
 - ⊗ SET NAIL & TAG IN WEST SIDE OF 50" BAY TREE, "R.C.E. 18221"
 - ⊗ SET NAIL & TAG IN SOUTHWEST SIDE OF 22" OAK TREE, "R.C.E. 18221"
 - FOUND 3/4" IRON PIPE & BRASS TAG "RCE 8181" PER 2008 M 215

SCALE: 1' = 100'

EXHIBIT A

ILS ASSOCIATES, INC.[®]
 CIVIL ENGINEERING AND LAND SURVEYING
 79 GALLI DRIVE, SUITE A NOVATO, CA 94948-0777 (415)865-5777 FAX (415)865-5768

DATE: 4/17/2012
 FILE: 8654CR.dwg
 PAGE 2 OF 3

A.P.N. 188-090-13

