

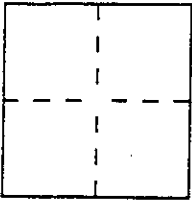
CORNER RECORD

Document Number A.P.N. 186-552-05

City of SAN RAFAEL

County of MARIN, California

Brief Legal Description LOT 18, 20 RM 28, MARIN COUNTY RECORDS



CORNER TYPE

Government Corner Control
Meander Property
Rancho Other
Date of Survey _____

COORDINATES (Optional)

N. _____
E. _____
Zone _____ Datum _____
Elev. _____

Corner — Left as found Found and tagged Established Reestablished Rebuilt

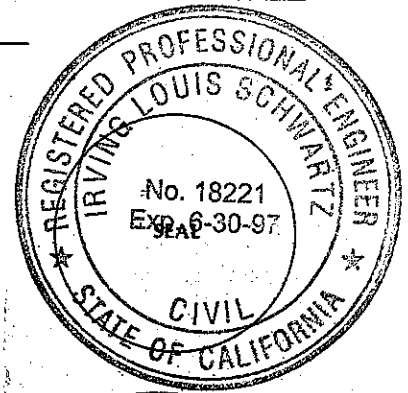
Identification and type of corner found: Evidence used to identify or procedure used to establish or reestablish the corner:

A description of the physical condition of the monument as found and as set or reset: SET NAIL & BRASS TAG MARKED R.C.E. 18221 ON THE MOST NORTHERLY CORNER OF LOT 18, 20 RM 28, MARIN COUNTY RECORDS. (See diagram page 2).

SURVEYOR'S STATEMENT

This Corner Record was prepared by me or under my direction in conformance with the Land Surveyors' Act on MAY 4 19 94

Signed [Signature] L.S. or R.C.E. Number C-18221

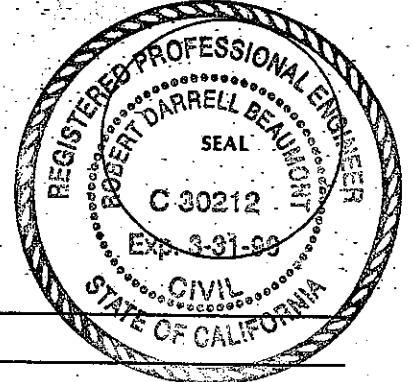


COUNTY SURVEYOR'S STATEMENT

This Corner Record was received MAY 9 19 94 and examined

and filed 5-9 1994

Signed [Signature] Title DES



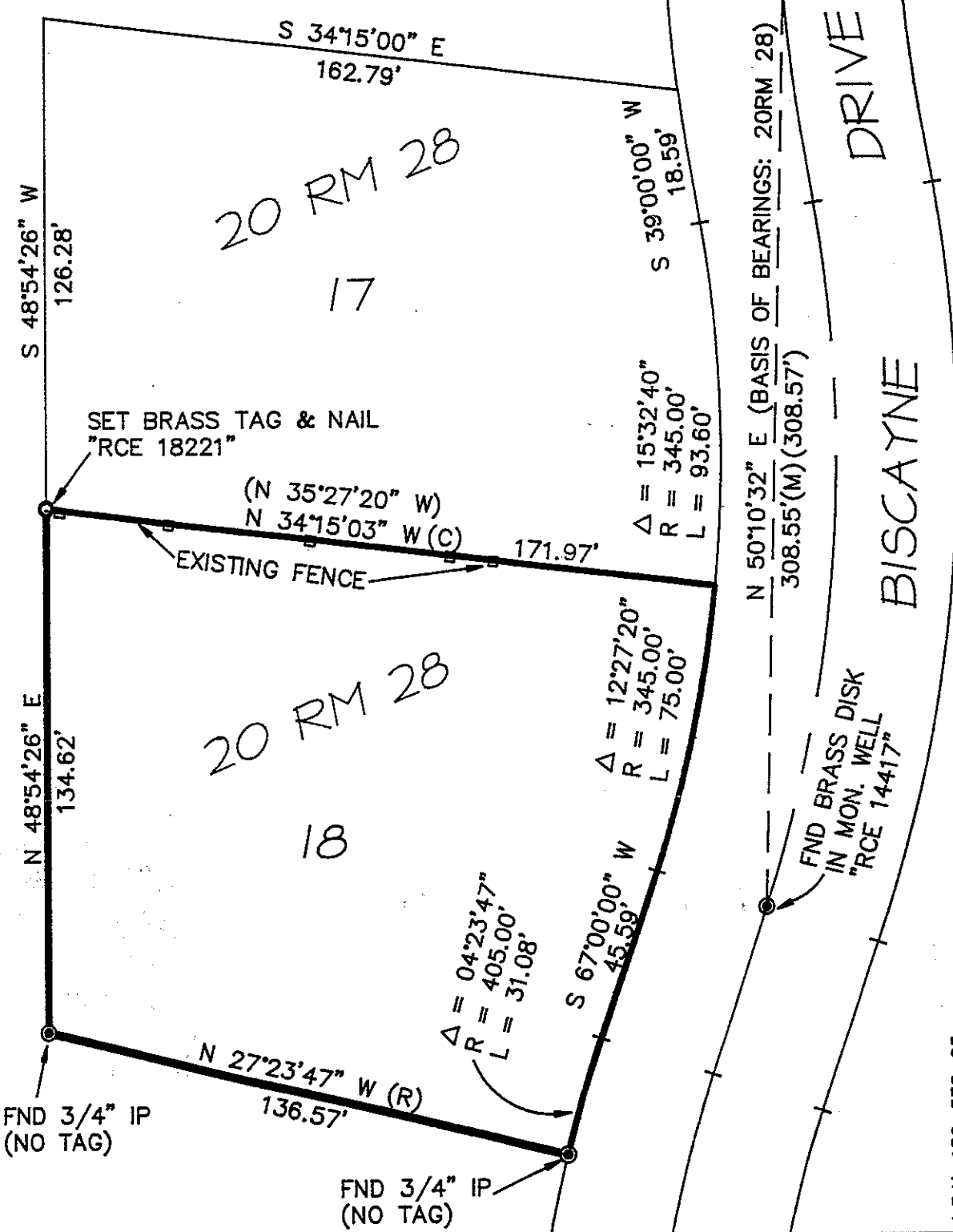
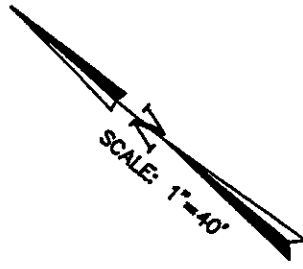
County Surveyor's Comment _____

LEGEND

- () RECORD DIMENSION PER 20 RM 28
- (R) RADIAL
- (M) MEASURED
- (C) CALCULATED

NOTE:

ALL DIMENSIONS SHOWN HERON ARE PER 20 RM 28 UNLESS OTHERWISE NOTED.



A.P.N. 186-552-05
 DWG FILE: 6374CR.DWG
 J.N. 6374