

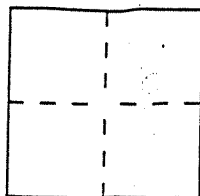
CORNER RECORD

City of San Rafael

Document Number I.N. 96-033146

County of Marin, California

Brief Legal Description Portion Lot 35; 20-Maps-28; Marin County Records



CORNER TYPE

- Government Corner
- Meander
- Rancho
- Date of Survey _____
- Control
- Property
- Other

COORDINATES (Optional)

N. _____
 E. _____
 Zone _____ Datum _____
 Elev. _____

Corner — Left as found Found and tagged Established Reestablished Rebuilt

Identification and type of corner found: Evidence used to identify or procedure used to establish or reestablish the corner:
 Found 3/4" I.D. iron pipe with no nail or tag at southeast corner Lot 35; Set redwood hub with bronze nail and tag "LS 4794" N 11° 51' 43" E 44.32 feet from southeast corner Lot 35; Set 3/4" I.D. iron pipes with plastic plugs "PLS 4794" N 87° 40' 00" E 37.25 feet and S 11° 51' 43" W 111.06' from northeast corner Lot 35 of "Map of Peacock Estates..", recorded in Book 20 of Maps, at Page 28, Marin County Records.

A description of the physical condition of the monument as found and as set or reset: _____

As shown upon reverse side

SURVEYOR'S STATEMENT

This Corner Record was prepared by me or under my direction in conformance with the Land Surveyors' Act on November 17, 1997.

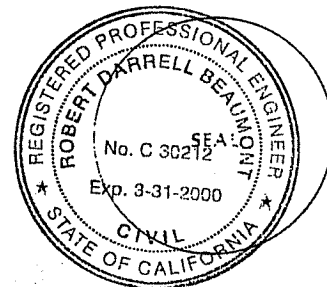
Signed [Signature] L.S. or R.C.E. Number PLS 4794



COUNTY SURVEYOR'S STATEMENT

This Corner Record was received December 5 1997 and examined and filed December 9 1997.

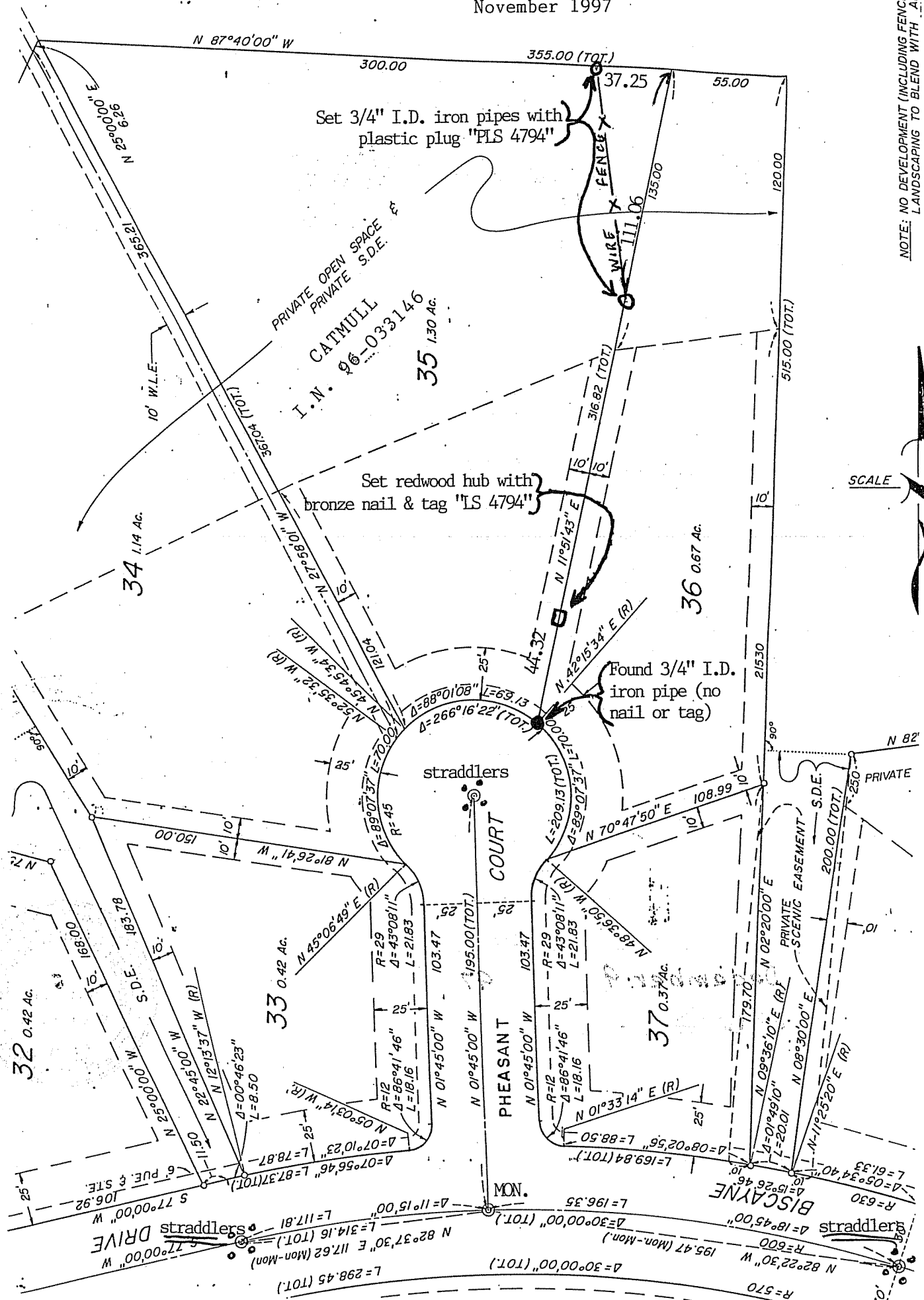
Signed [Signature] Title Deputy



County Surveyor's Comment _____

November 1997

NOTE: NO DEVELOPMENT (INCLUDING FENCES) TO C
ADJACENT LANDSCAPING TO BLEND WITH ADJACENT



SCALE 1" = 60'