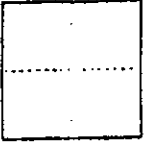


CORNER RECORD

COUNTY OF MARIN T. _____ R. _____ MERIDIAN _____ CALIFORNIA

CORNER TYPE: GOV'T. CORNER MEANDER RANCHO CONTROL OTHER

CORNER IDENTIFICATION — DATE OF VISIT DEC. 19, 1989



CORNER — LEFT AS FOUND FOUND AND TAGGED REESTABLISHED OBLITERATED CORNER RESULT

PHYSICAL DESCRIPTION OF CORNER FOUND; EVIDENCE AND METHOD USED TO IDENTIFY OR REESTABLISH

BASED ON FOUND MONUMENTS SHOWN ON "PEACOCK GAP NEIGHBOOD ONE-B", R.M. 19-45.

PHYSICAL DESCRIPTION OF MONUMENTS RESULT OR PERPETUATED

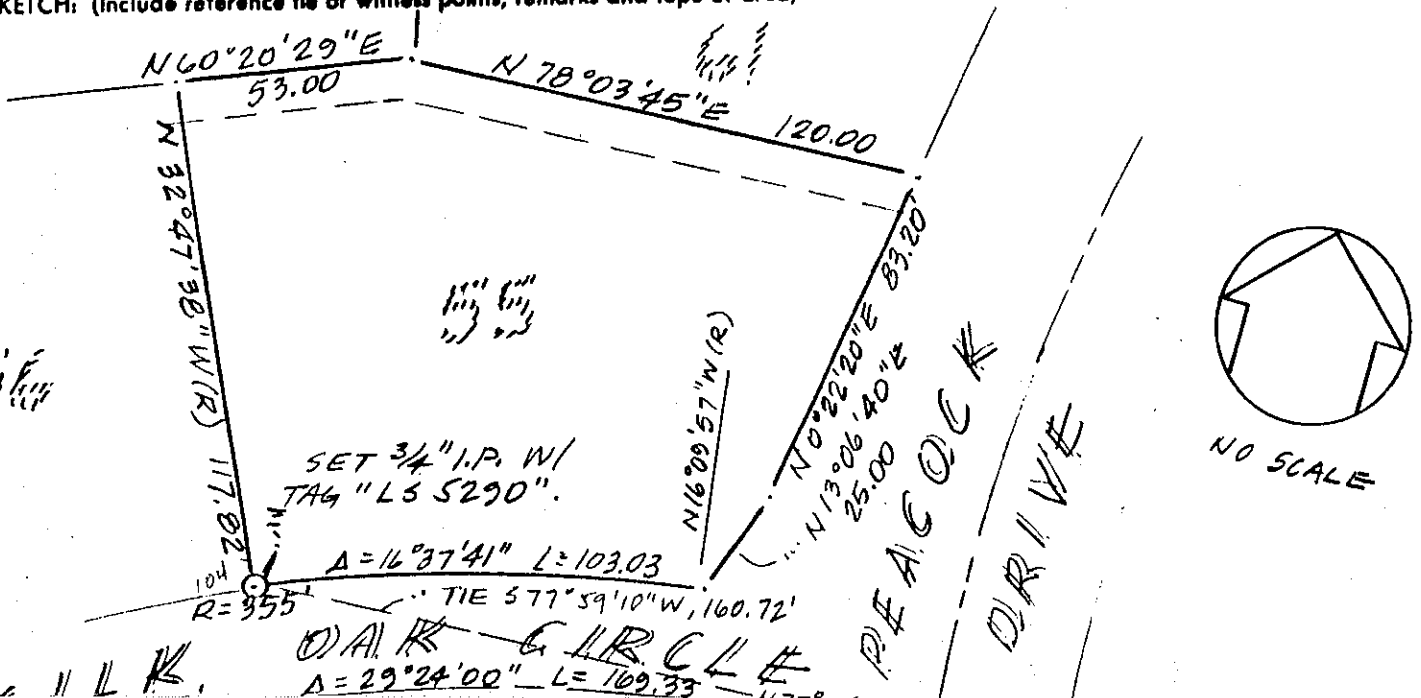
SET 3/4" I.P. W/ TAG "L.S. 5290"

A.P. NO. 186-530-55

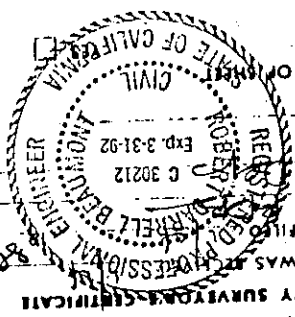
CALIFORNIA COORDINATE SYSTEM ORDER: FIRST SECOND THIRD
STATIONS USED: NGS (USC & GS) STATE COUNTY OTHER STATION _____ STATION _____
ZONE _____ ELEVATION _____ NORTHINGS (Y) _____ EASTINGS (X) _____

(Fold)

SKETCH: (Include reference tie or witness points, remarks and topo of area)



NO 17



COUNTY SURVEYORS CERTIFICATE
THE CORNER RECORD WAS RECORDED BY ME
AND EXAMINED AND FILED
BY: _____
TITLE: _____
DOCUMENT No. _____
STATEMENT ON BACK OF THIS
STATE OF CALIFORNIA

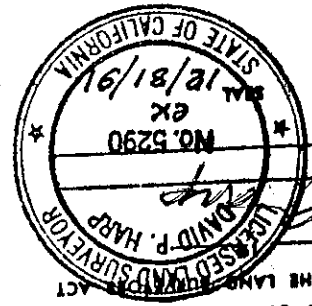
Sheet 1 of 3

49.71
224.00 E

215.93

N 64° 02' 56" E

5 " F=330



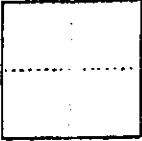
SURVEYOR'S CERTIFICATE
THIS CORNER RECORD WAS PREPARED BY ME OR UNDER MY
DIRECTION IN CONFORMANCE WITH THE LAND SURVEYING ACT
ON 12/21/89
SIGNED: *David P. Harp*
L.S. or R.C.E. No. _____
NO. 5290
EX
12/18/91
STATE OF CALIFORNIA

CORNER RECORD

COUNTY OF MARIN T. _____ R. _____ MERIDIAN _____ CALIFORNIA

CORNER TYPE: GOVT. CORNER MEANDER RANCHO CONTROL OTHER

CORNER IDENTIFICATION — DATE OF VISIT DEC. 19, 1989



CORNER — LEFT AS FOUND FOUND AND TAGGED REESTABLISHED OBLITERATED CORNER REBUILT

PHYSICAL DESCRIPTION OF CORNER FOUND, EVIDENCE AND METHOD USED TO IDENTIFY OR REESTABLISH

BASED ON FOUND MONUMENTS SHOWN ON "PEACOCK GAP NEIGHBOHOOD ONE-B", R.M. 19-45.

PHYSICAL DESCRIPTION OF MONUMENTS REBUILT OR PERPETUATED

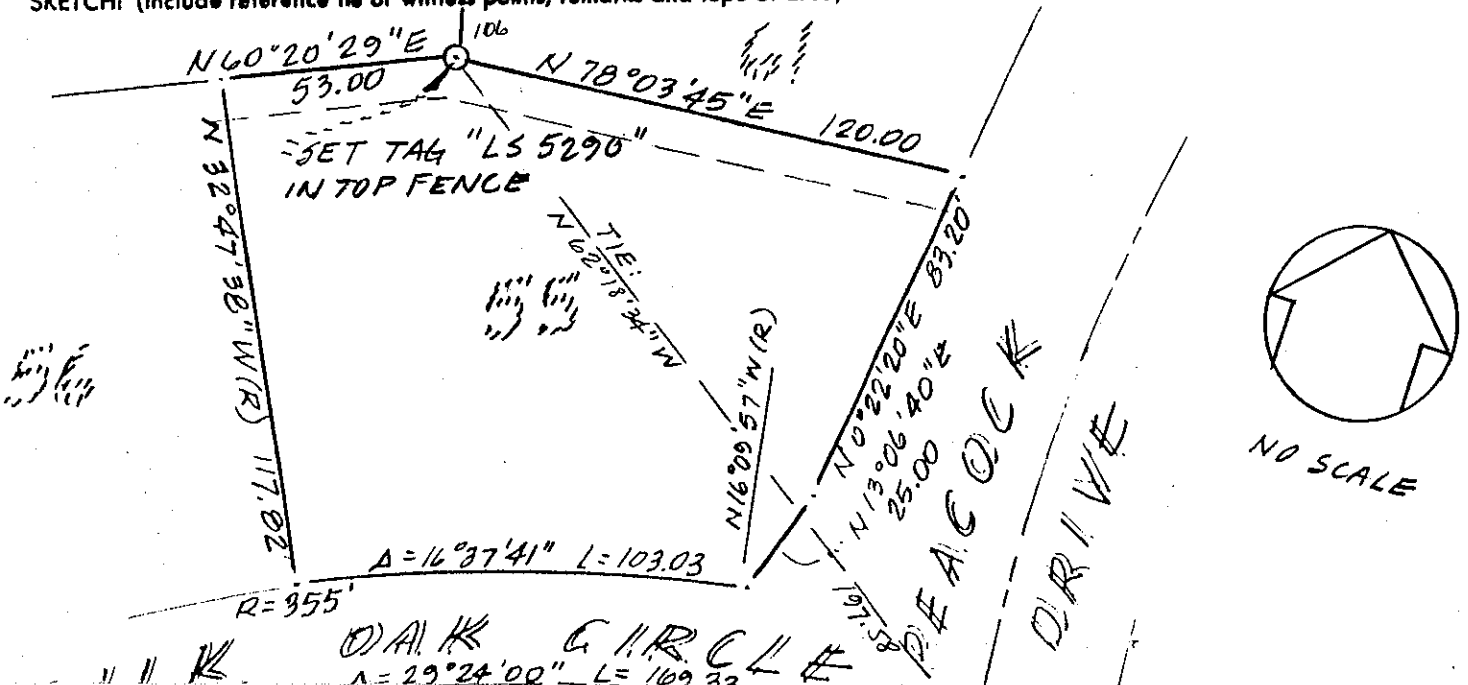
SET TAG "L.S. 5290" ON TOP OF FENCE

A.P. NO. 186-530-55

CALIFORNIA COORDINATE SYSTEM ORDER: FIRST SECOND THIRD
STATIONS USED: NGS (USC & GS) STATE COUNTY OTHER STATION _____ STATION _____
ZONE _____ ELEVATION _____ NORTHINGS (Y) _____ EASTINGS (X) _____

(Fold)

SKETCH: (Include reference tie or witness points, remarks and topo of area)



COUNTY SURVEYOR'S CERTIFICATE

THE CORNER RECORD WAS RECORDED IN THE PUBLIC RECORDS OF THE COUNTY OF CALIFORNIA ON 12/21/89

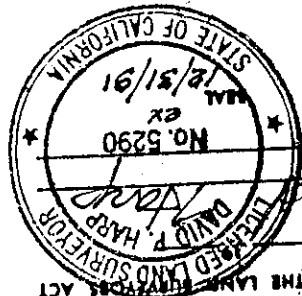
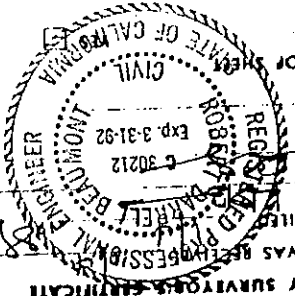
AND EXAMINED AND FILED BY: *David A. Harp*

TITLE: _____

BY: _____

DOCUMENT No. _____

STATEMENT ON BACK OF SHEET



SURVEYOR'S CERTIFICATE

THIS CORNER RECORD WAS PREPARED BY ME OR UNDER MY DIRECTION IN CONFORMANCE WITH THE LAND SURVEYORS ACT ON 12/21/89

SIGNED: *David A. Harp*

L.S. or R.C.E. No. _____

Sheet 2 of 3

N 64°02'56" E

215.93

9 11 4 R=330

101

CORNER RECORD

COUNTY OF MARIN T. _____ R. _____ MERIDIAN _____ CALIFORNIA

CORNER TYPE: GOV'T. CORNER MEANDER RANCHO CONTROL OTHER
 CORNER IDENTIFICATION — DATE OF VISIT DEC. 19, 1989



CORNER — LEFT AS FOUND FOUND AND TAGGED REESTABLISHED OBLITERATED CORNER REBUILT

PHYSICAL DESCRIPTION OF CORNER FOUND; EVIDENCE AND METHOD USED TO IDENTIFY OR REESTABLISH

BASED ON FOUND MONUMENTS SHOWN ON "PEACOCK GAP NEIGHBOHD ONE-B", R.M. 19-45.

PHYSICAL DESCRIPTION OF MONUMENTS REBUILT OR PERPETUATED

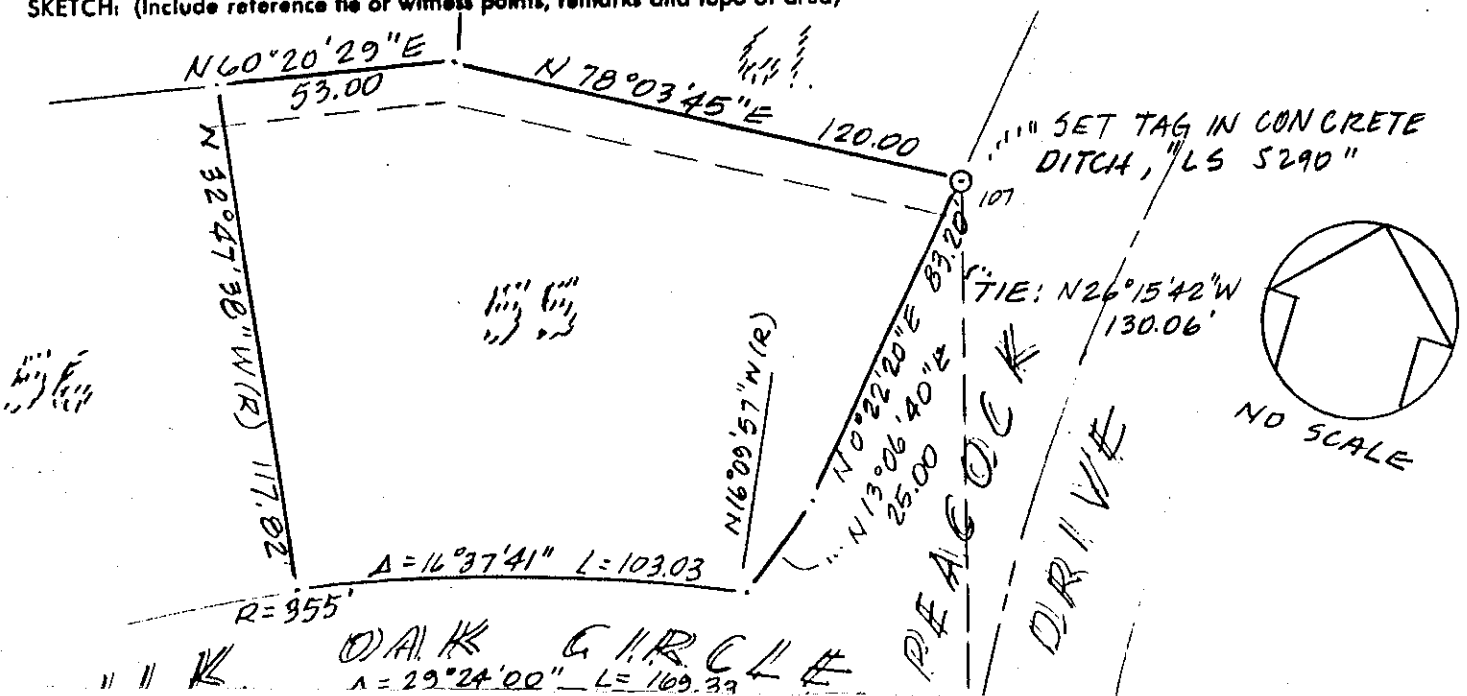
SET TAG "L.S. 5290" IN CONCRETE DITCH.

A.P. NO. 186-530-55

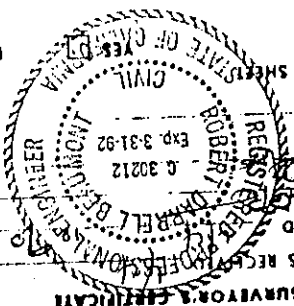
CALIFORNIA COORDINATE SYSTEM ORDER: FIRST SECOND THIRD
 STATIONS USED: NGS (USC & GS) STATE COUNTY OTHER STATION _____ STATION _____
 ZONE _____ ELEVATION _____ NORTHINGS (Y) _____ EASTINGS (X) _____

(Fold)

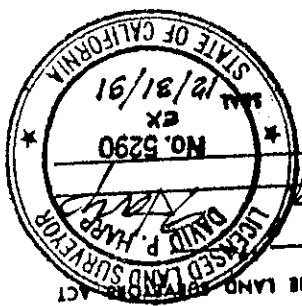
SKETCH: (Include reference tie or witness points, remarks and topo of area)



NO. 17



COUNTY SURVEYOR'S CERTIFICATE
THE CORNER RECORD WAS RECORDED IN BOOK 101 PAGE 101
AND EXAMINED AND FILED
BY: *[Signature]*
TITLE: *[Signature]*
DOCUMENT NO. _____
STATEMENT ON BACK OF SHEET OF THIS CERTIFICATE
NO. 17



SURVEYOR'S CERTIFICATE
THIS CORNER RECORD WAS PREPARED BY ME OR UNDER MY
DIRECTION IN CONFORMANCE WITH THE LAND SURVEYOR ACT
ON 12/21/89
BY: *[Signature]*
L.S. or R.C.E. No. _____
DATED: 12/31/91

Sheet 3 of 3

5 11
R-330
N 64° 02' 56" E
215.93
N 15° 24' 00" E
49.71
101