

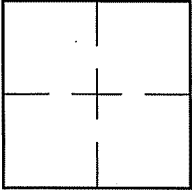
CORNER RECORD

Document Number A.P.186-530-40

City of SAN RAFAEL

County of MARIN, California

Brief Legal Description LOT 40 PER 19 R.M. 45



CORNER TYPE

COORDINATES (Optional)

Government Corner  Control

Meander  Property

Rancho  Other

Date of Survey 10/7/11

N. \_\_\_\_\_  
 E. \_\_\_\_\_  
 Zone \_\_\_\_\_ NAD27  NAD83   
 NAD83 Epoch \_\_\_\_\_  
 Elev. \_\_\_\_\_  
 Vert. Datum: NGVD29  NAVD88   
 Meas. Units: Metric  Imperial

Corner- Left as found  Found and tagged  Established  Reestablished  Rebuilt

Identification and type of corner found: Evidence used to identify or procedure used to establish or reestablish the corner:

ESTABLISHED LOT 40 USING FOUND STREET MONUMENTS ON LUPINE COURT AND AS SHOWN ON SHEET 2.

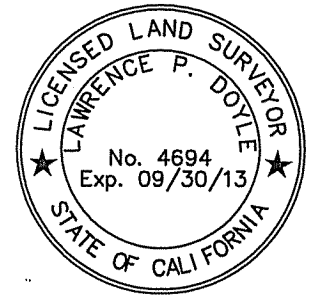
A description of the physical condition of the monument as found and as set or reset: SEE SHEET 2.

SURVEYOR'S STATEMENT

This Corner Record was prepared by me or under my direction in conformance with

the Land Surveyor's Act on OCTOBER 7, 2011

Signed Lawrence P. Doyle P.L.S. or R.C.E. No. P.L.S. 4694



COUNTY SURVEYOR'S STATEMENT

This Corner Record was received NOVEMBER 2, 2011

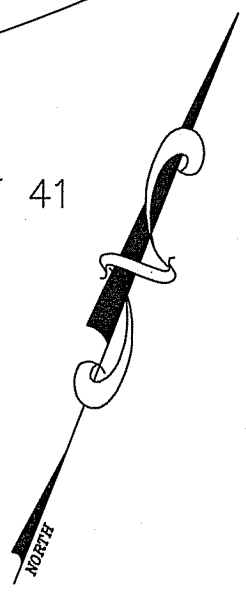
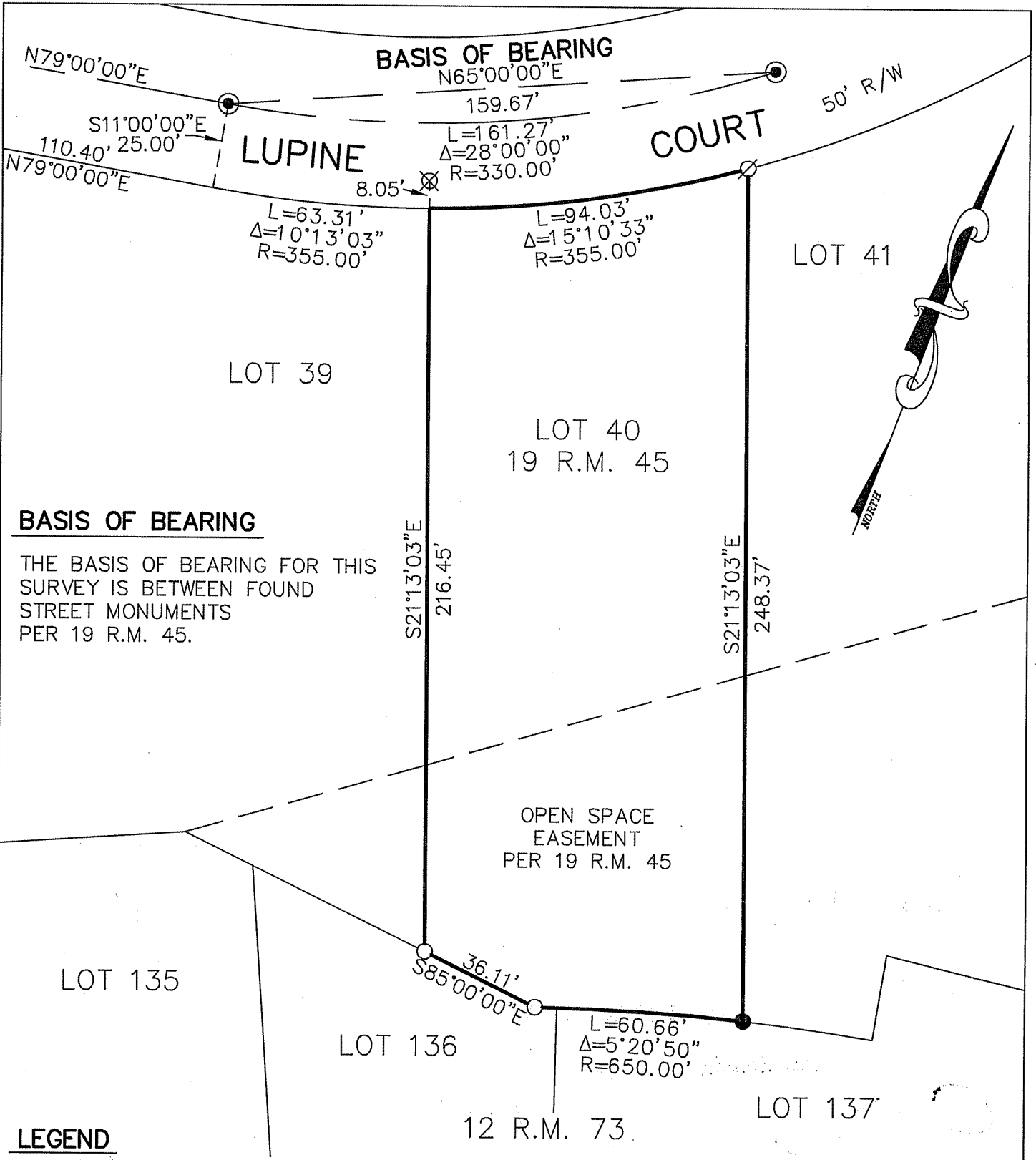
and examined and filed DECEMBER 22, 2011

Signed [Signature] P.L.S. or R.C.E. No. 7128

Title COUNTY SURVEYOR

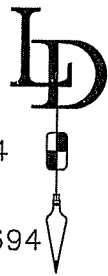
County Surveyor's Comment \_\_\_\_\_





**LEGEND**

- FOUND STREET MONUMENT PER 19 R.M. 45
- FOUND PIPE & PLUG, L.S. 3201 PER 19 R.M. 45
- SET 3/4" PIPE & PLUG, L.S. 4694
- ∅ SET REBAR & CAP, L.S. 4694
- ⊗ SET NAIL & TAG IN CURB, L.S. 4694



<b>CORNER RECORD</b>	
LOT 40, 19 R.M. 45	
SAN RAFAEL MARIN COUNTY CALIFORNIA	
SCALE: 1" = 40'	DRAWN BY:
DATE: 10/7/11	<b>LAWRENCE P. DOYLE</b>
LAND SURVEYOR/CIVIL ENGINEER	
100 HELENS LANE MILL VALLEY CA 94941 (415-388-9585)	
DRAWING NO. 2174-11	