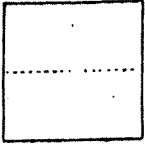


CORNER RECORD

COUNTY OF MARIN T. _____ R. _____ MERIDIAN _____ CALIF

CORNER TYPE: GOV'T. CORNER MEANDER RANCHO **CONTROL** OTHER

CORNER IDENTIFICATION — DATE OF VISIT _____ 19____



CORNER — LEFT AS FOUND FOUND AND TAGGED REESTABLISHED OBLITERATED CORNER REBUILT

PHYSICAL DESCRIPTION OF CORNER FOUND, EVIDENCE AND METHOD USED TO IDENTIFY OR REESTABLISH
BASED ON FOUND MONUMENTS SHOWN ON "PEACOCK GAP NEIGHBORHOOD ONE-B", R.M. 19-45

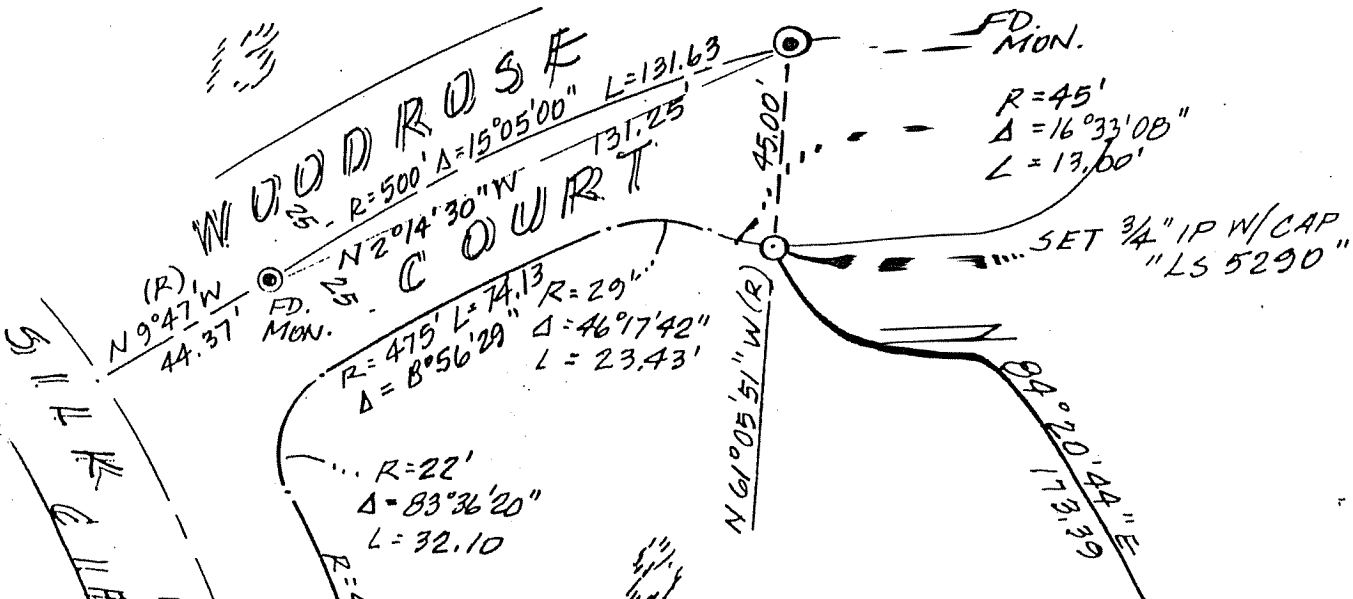
PHYSICAL DESCRIPTION OF MONUMENTS REBUILT OR PERPETUATED
SET 3/4 "I.P. W/ GAP "L.S. 5290"

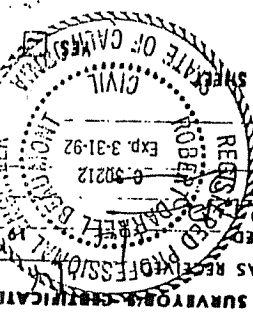
A.P. NO. 186-530-08

CALIFORNIA COORDINATE SYSTEM ORDER: FIRST SECOND THIRD STATION _____
STATIONS USED: NGS (USC & GS) STATE COUNTY OTHER EASTINGS (X) _____
ZONE _____ ELEVATION _____ NORTHINGS (Y) _____

(Fold)

SKETCH: (Include reference tie or witness points, remarks and topo of area)





STATEMENT ON BACK OF SHEET

DOCUMENT No. _____

TITLE: _____

BY: _____

AND EXAMINED AND FILED

THE CORNER RECORD WAS RECEIVED

COUNTY SURVEYOR'S CERTIFICATE



SURVEYOR'S CERTIFICATE

THIS CORNER RECORD WAS PREPARED BY ME OR UNDER MY

DIRECTION IN CONFORMANCE WITH THE LAND SURVEYORS ACT

ON 12/21/89

SIGNED: *David P. Harp*

L.S. or R.C.E. No. _____