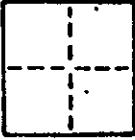


### CORNER RECORD

COUNTY OF Marin T. \_\_\_\_\_ R. \_\_\_\_\_ MERIDIAN \_\_\_\_\_ CALIFORNIA

CORNER TYPE: GOVT. CORNER  MEANDER  RANCHO  CONTROL  OTHER

CORNER IDENTIFICATION — DATE OF VISIT \_\_\_\_\_ 19\_\_\_\_



CORNER — LEFT AS FOUND  FOUND AND TAGGED  REESTABLISHED OBLITERATED CORNER  RESULT

PHYSICAL DESCRIPTION OF CORNER FOUND, EVIDENCE AND METHOD USED TO IDENTIFY OR REESTABLISH

Set 3/4" I.D. iron pipe with plastic plug "LS 3775" at the most southerly corner of Lot 61; "Map of Glenwood Forest Unit Two"; recorded in Book 14 of Maps at Page 13; Marin County Records.

AP No. 186-493-18 Survey No. 1711

PHYSICAL DESCRIPTION OF MONUMENTS RESULT OR PERPETUATED

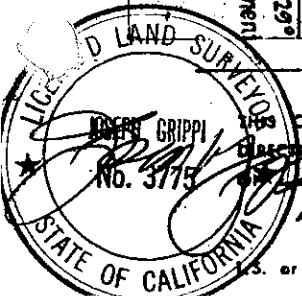
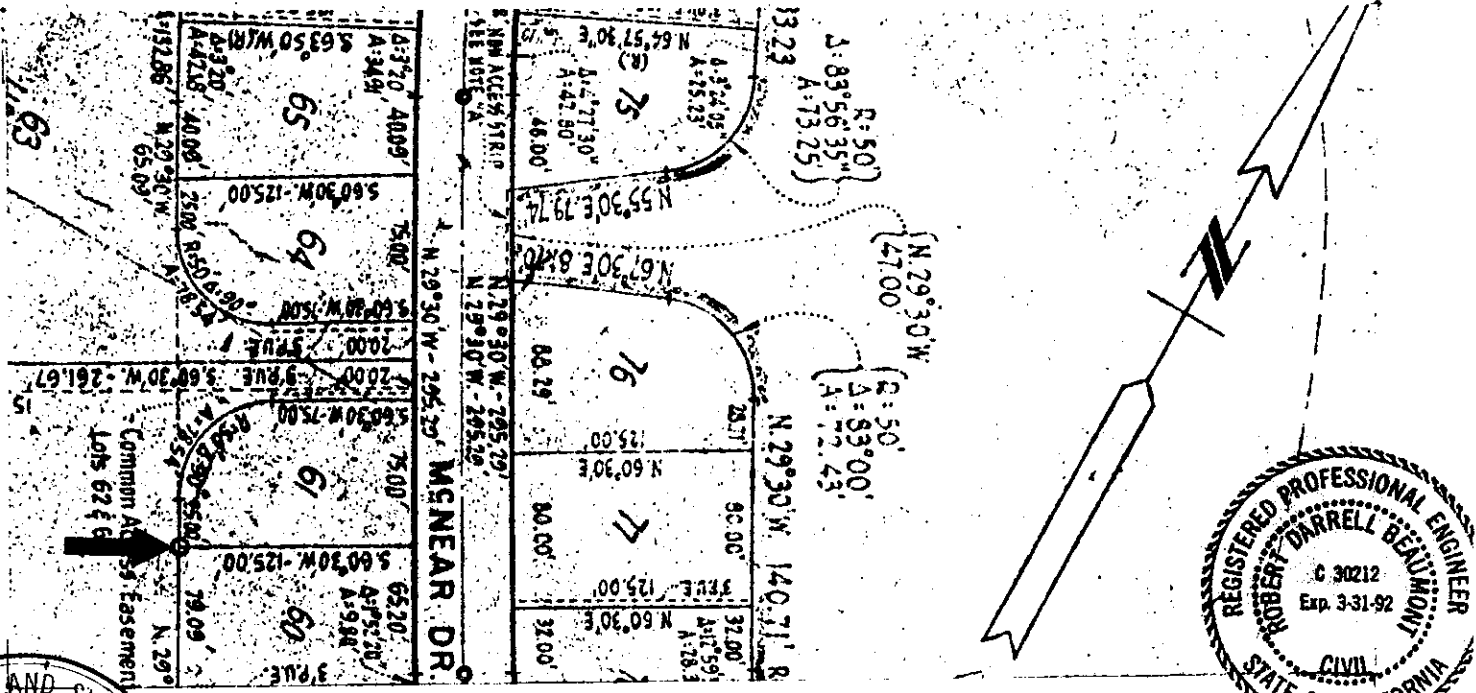
As Shown

CALIFORNIA COORDINATE SYSTEM ORDER: FIRST  SECOND  THIRD

STATIONS USED: NGS (USC & GS)  STATE  COUNTY  OTHER  STATION \_\_\_\_\_ STATION \_\_\_\_\_

ZONE \_\_\_\_\_ ELEVATION \_\_\_\_\_ NORTHINGS (Y) \_\_\_\_\_ EASTINGS (X) \_\_\_\_\_

SKETCH: (Include reference ties or witness points, remarks and topo of area)



**SURVEYOR'S CERTIFICATE**

THIS CORNER RECORD WAS PREPARED BY ME OR UNDER MY SUPERVISION IN CONFORMANCE WITH THE LAND SURVEYORS ACT

Signed: \_\_\_\_\_ May 5 19 88

S. or R.C.E. No. LS 3775 exp. 12/31/91.

**COUNTY SURVEYOR'S CERTIFICATE**

THE CORNER RECORD WAS RECEIVED 5/21 1988

AND EXAMINED AND FILED 5/25 1988

BY: [Signature]

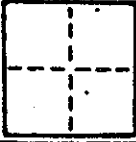
TITLE: [Signature]

DOCUMENT No. \_\_\_\_\_

STATEMENT ON BACK OF SHEET

**CORNER RECORD**

COUNTY OF Marin T. \_\_\_\_\_ S. \_\_\_\_\_ MEMORIAL CALIFORNIA  
 CORNER TYPE: GOVT. CORNER  MEANDER  RANCHO  CONTROL  OTHER   
 CORNER IDENTIFICATION - DATE OF VISIT \_\_\_\_\_ 19\_\_\_\_



CORNER - LEFT AS FOUND  FOUND AND TAGGED  REESTABLISHED OBLITERATED CORNER  RESULT

**PHYSICAL DESCRIPTION OF CORNER FOUND, EVIDENCE AND METHOD USED TO IDENTIFY OR REESTABLISH**

Set 3/4" I.D. iron pipe with plastic plug "LS 3775" at the southerly begin curve (R=50') on the westerly boundary of Lot 61 "Map of Glenwood Forest Unit Two", recorded in Book 14 of Maps at Page 13; Marin County Records.

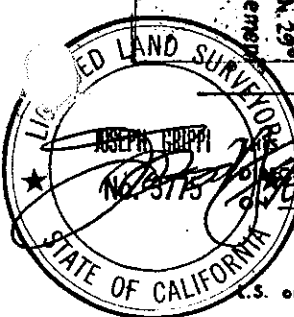
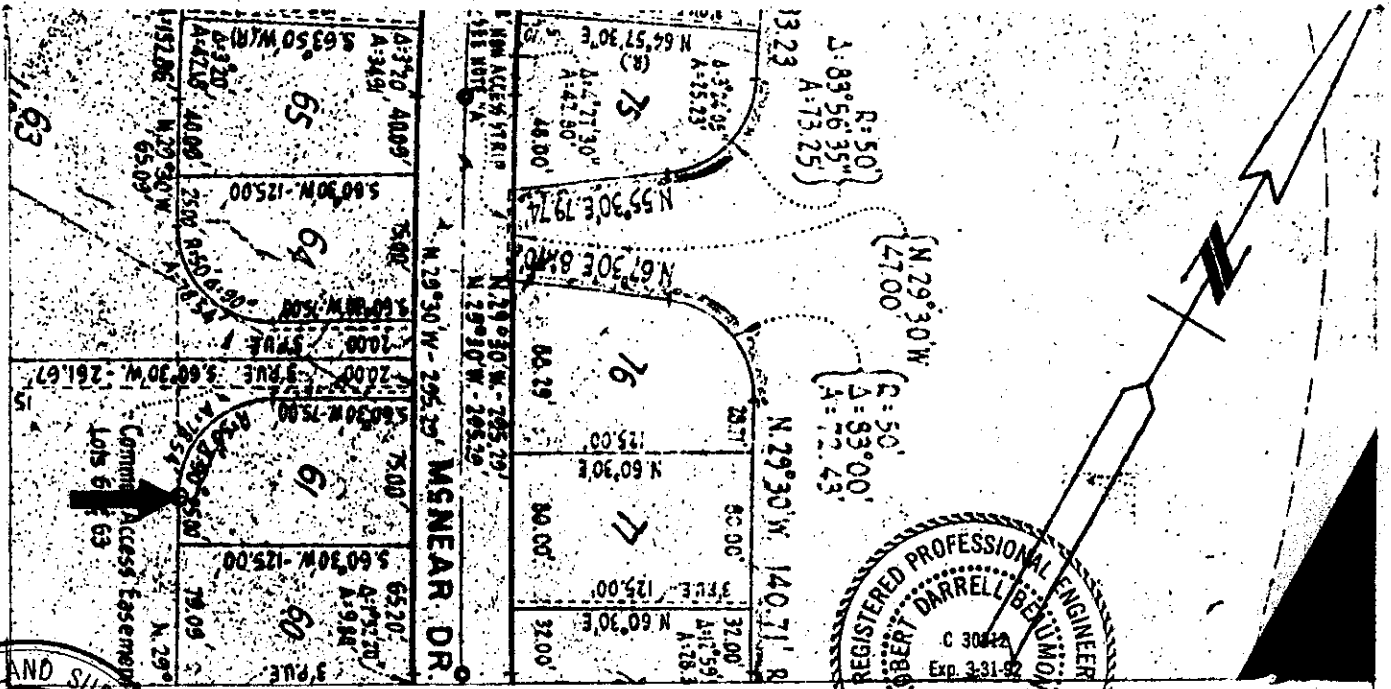
AP No. 186-493-18 Survey No. 1711

**PHYSICAL DESCRIPTION OF MONUMENTS RESULT OR PERPETUATED**

As Shown

CALIFORNIA COORDINATE SYSTEM ORDER: FIRST  SECOND  THIRD   
 STATIONS USED: NGS (USC & GS)  STATE  COUNTY  OTHER  STATION \_\_\_\_\_ STATION \_\_\_\_\_  
 ZONE \_\_\_\_\_ ELEVATION \_\_\_\_\_ NORTHINGS (Y) \_\_\_\_\_ EASTINGS (X) \_\_\_\_\_

**SKETCH: (Include reference tie or witness points, remarks and topo of area)**



**SURVEYOR'S CERTIFICATE**  
 CORNER RECORD WAS PREPARED BY ME OR UNDER MY  
 SUPERVISION IN CONFORMANCE WITH THE LAND SURVEYORS ACT  
 May 5 19 88  
 SIGNED: \_\_\_\_\_  
 L.S. or R.C.E. No. LS 3775 exp. 12/31/91

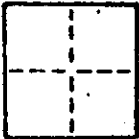
**CIVIL ENGINEER'S SURVEYOR'S CERTIFICATE**  
 THIS CORNER RECORD WAS RECEIVED APR 19 1988  
 AND EXAMINED AND FILED SEP 25 1988  
 BY: REP  
 TITLE: REP  
 DOCUMENT No. \_\_\_\_\_  
 STATEMENT ON BACK OF SHEET

### CORNER RECORD

COUNTY OF Marin T. \_\_\_\_\_ R. \_\_\_\_\_ MERIDIAN \_\_\_\_\_ CALIFORNIA

CORNER TYPE: GOVT. CORNER  MEANDER  RANCHO  CONTROL  OTHER

CORNER IDENTIFICATION — DATE OF VISIT \_\_\_\_\_ 19\_\_



CORNER — LEFT AS FOUND  FOUND AND TAGGED  REESTABLISHED OBLITERATED CORNER  RESULT

**PHYSICAL DESCRIPTION OF CORNER FOUND; EVIDENCE AND METHOD USED TO IDENTIFY OR REESTABLISH**

Set 3/4" I.D. iron pipe with plastic plug "LS 3775" at the northerly end of curve (R=50') on the northerly boundary of Lot 61; "Map of Glenwood Forest Unit Two"; recorded in Book 14 of Maps at Page 13; Marin County Records.

AP No. 186-493-13 Survey No. 1711

**PHYSICAL DESCRIPTION OF MONUMENTS RESULT OR PERPETUATED**

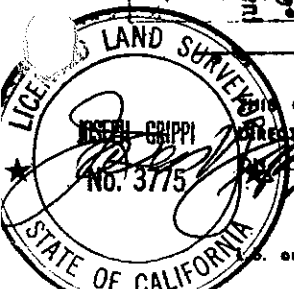
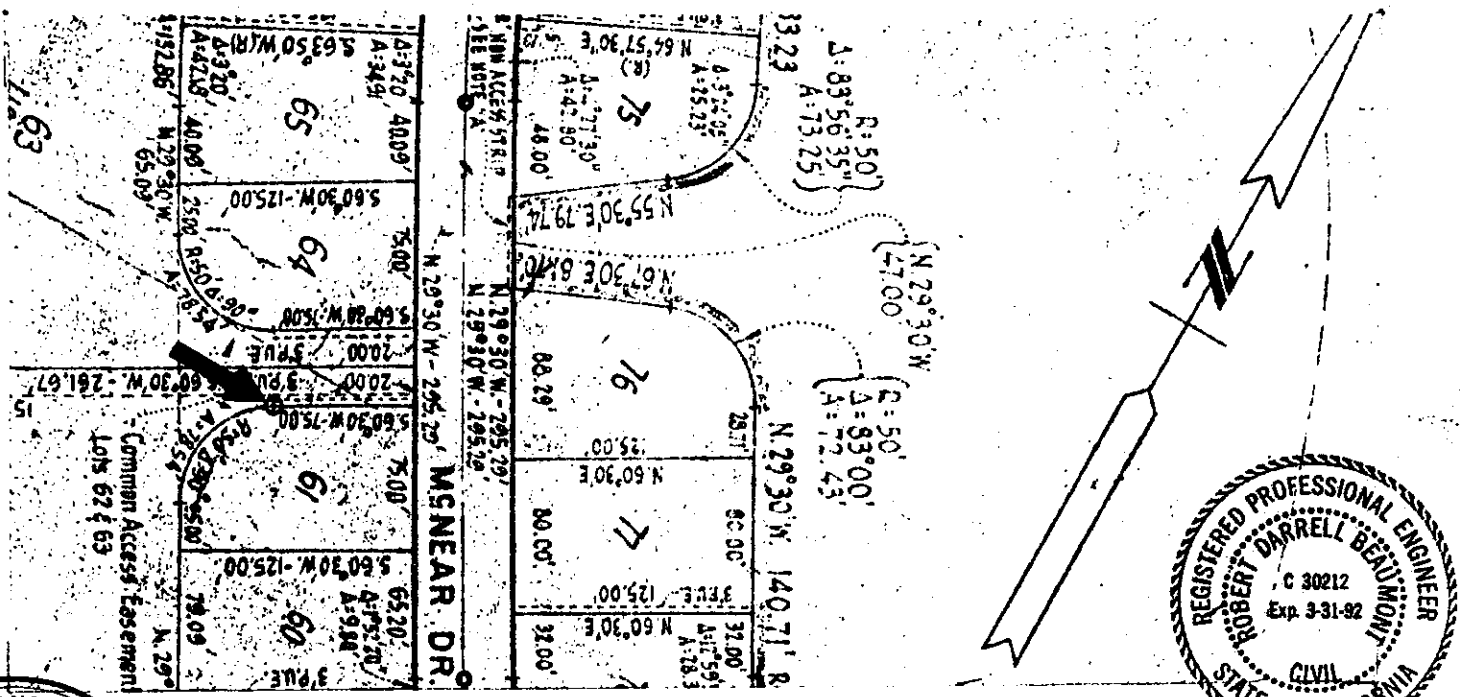
As Shown

CALIFORNIA COORDINATE SYSTEM ORDER: FIRST  SECOND  THIRD

STATIONS USED: NGS (USC & GS)  STATE  COUNTY  OTHER  STATION \_\_\_\_\_ STATION \_\_\_\_\_

ZONE \_\_\_\_\_ ELEVATION \_\_\_\_\_ NORTHINGS (Y) \_\_\_\_\_ EASTINGS (X) \_\_\_\_\_

**SKETCH: (Include reference ties or witness points, remarks and topo of area)**



**SURVEYOR'S CERTIFICATE**  
 THIS CORNER RECORD WAS PREPARED BY ME OR UNDER MY DIRECTION IN CONFORMANCE WITH THE LAND SURVEYORS ACT  
 May 5 1988

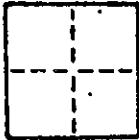
SIGNED: \_\_\_\_\_  
 No. of R.C.E. No.: LS 3775 exp. 12/31/91

**COUNTY SURVEYOR'S CERTIFICATE**  
 THE CORNER RECORD WAS RECEIVED 5/21/88  
 AND EXAMINED AND FILED 5/25/88 19\_\_  
 BY: RDP  
 TITLE: \_\_\_\_\_

DOCUMENT No. \_\_\_\_\_  
 STATEMENT ON BACK OF SHEET

### CORNER RECORD

COUNTY OF Marin T. \_\_\_\_\_ R. \_\_\_\_\_ MERRIDIAN CALIFORNIA  
 CORNER TYPE: GOVT. CORNER  MEANDER  RANCHO  CONTROL  OTHER   
 CORNER IDENTIFICATION — DATE OF VISIT \_\_\_\_\_ 19\_\_\_\_



CORNER — LEFT AS FOUND  FOUND AND TAGGED  REESTABLISHED OBLITERATED CORNER  REBUILT

PHYSICAL DESCRIPTION OF CORNER FOUND; EVIDENCE AND METHOD USED TO IDENTIFY OR REESTABLISH

Set 3/4" I.D. iron pipe with plastic plug "LS 3775" at the most northerly corner of Lot 61; "Map of Glenwood Forest Unit Two"; recorded in Book 14 of Maps at Page 13; Marin County Records.

AP No. 186-493-18

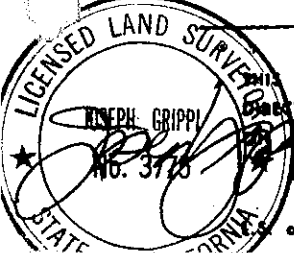
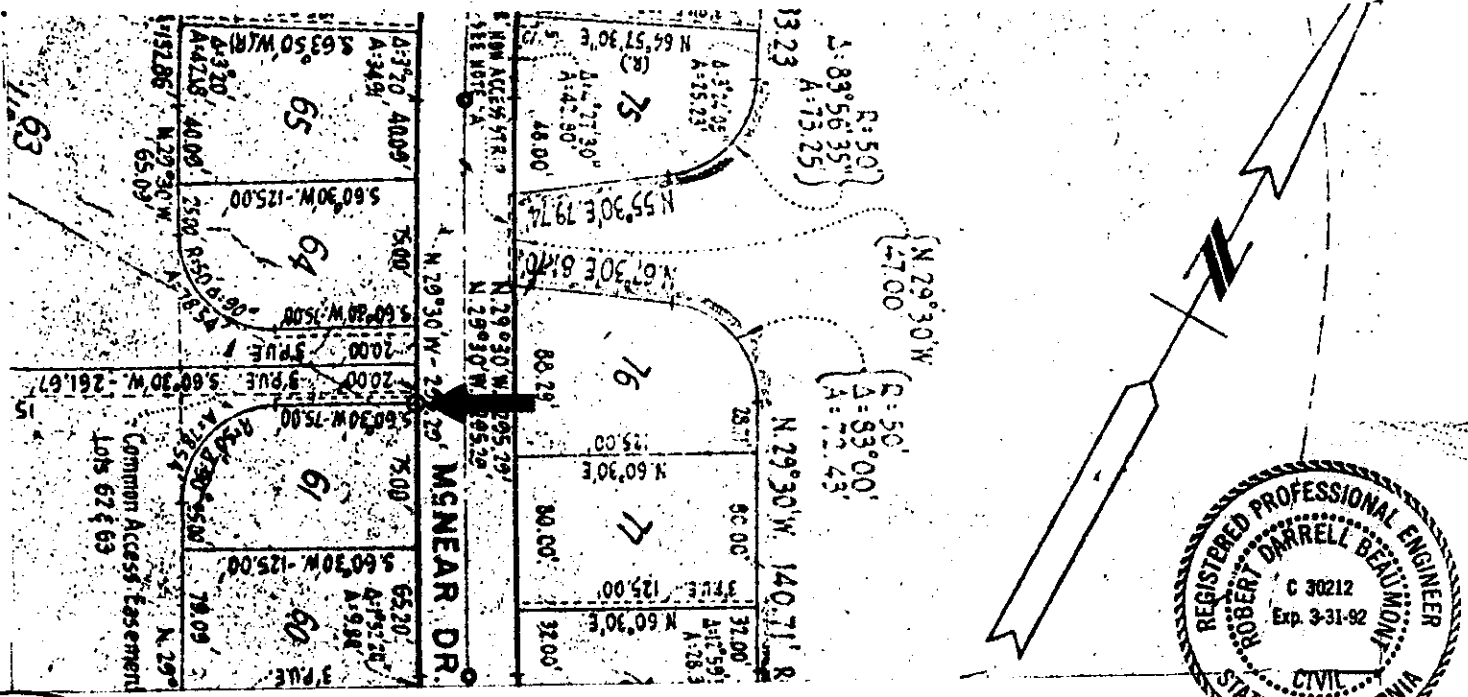
Survey No. 1711

PHYSICAL DESCRIPTION OF MONUMENTS REBUILT OR PERPETUATED

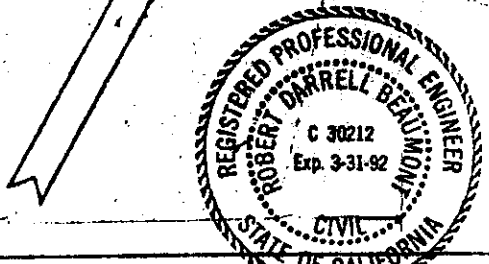
As Shown

CALIFORNIA COORDINATE SYSTEM ORDER: FIRST  SECOND  THIRD   
 STATIONS USED: NGS (USC & GS)  STATE  COUNTY  OTHER  STATION \_\_\_\_\_ STATION \_\_\_\_\_  
 ZONE \_\_\_\_\_ ELEVATION \_\_\_\_\_ NORTHINGS (Y) \_\_\_\_\_ EASTINGS (X) \_\_\_\_\_

SKETCH: (Include reference file or witness points, remarks and topo of area)



**SURVEYOR'S CERTIFICATE**  
 THIS CORNER RECORD WAS PREPARED BY ME OR UNDER MY SUPERVISION IN CONFORMANCE WITH THE LAND SURVEYORS ACT  
 May 5 1988  
 SIGNED: \_\_\_\_\_  
 or R.C.E. No.: LS 3775 exp 12/31/91



**COUNTY SURVEYOR'S CERTIFICATE**  
 THE CORNER RECORD WAS RECEIVED AND EXAMINED AND FILED  
 BY: ROS  
 TITLE: D.S.  
 DOCUMENT No. \_\_\_\_\_  
 STATEMENT ON BACK OF SHEET