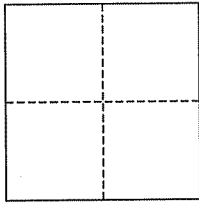


CORNER RECORD

City of San Rafael

Document Number AP# 186-470-87
County of Marin, California

Brief Legal Description Lot 3, 20 PM 22



CORNER TYPE

Government Corner Control
Meander Property
Rancho Other
Date of Survey October 16, 2008

COORDINATES (Optional)

N. _____
E. _____
Zone _____ NAD27 NAD83
NAD83 Epoch _____
Elev. _____
Vert. Datum: NGVD29 NAVD88
Meas. Units: Metric Imperial

Corner- Left as found Found and tagged Established Reestablished Rebuilt

Identification and type of corner found: Evidence used to identify or procedure used to establish or reestablish the corner:
Found Standard Street Monuments per 20 PM 22 on McNear Drive.

A description of the physical condition of the monument as found and as set or reset: Set Hub&Tack, and Rebar,
along the westerly property line, per 20 PM 22.

SURVEYOR'S STATEMENT

This corner Record was prepared by me or under my direction in conformance with
the Land Surveyor's Act on October 17, 2008
Signed [Signature] P.L.S. or R.C.E. No. 30465

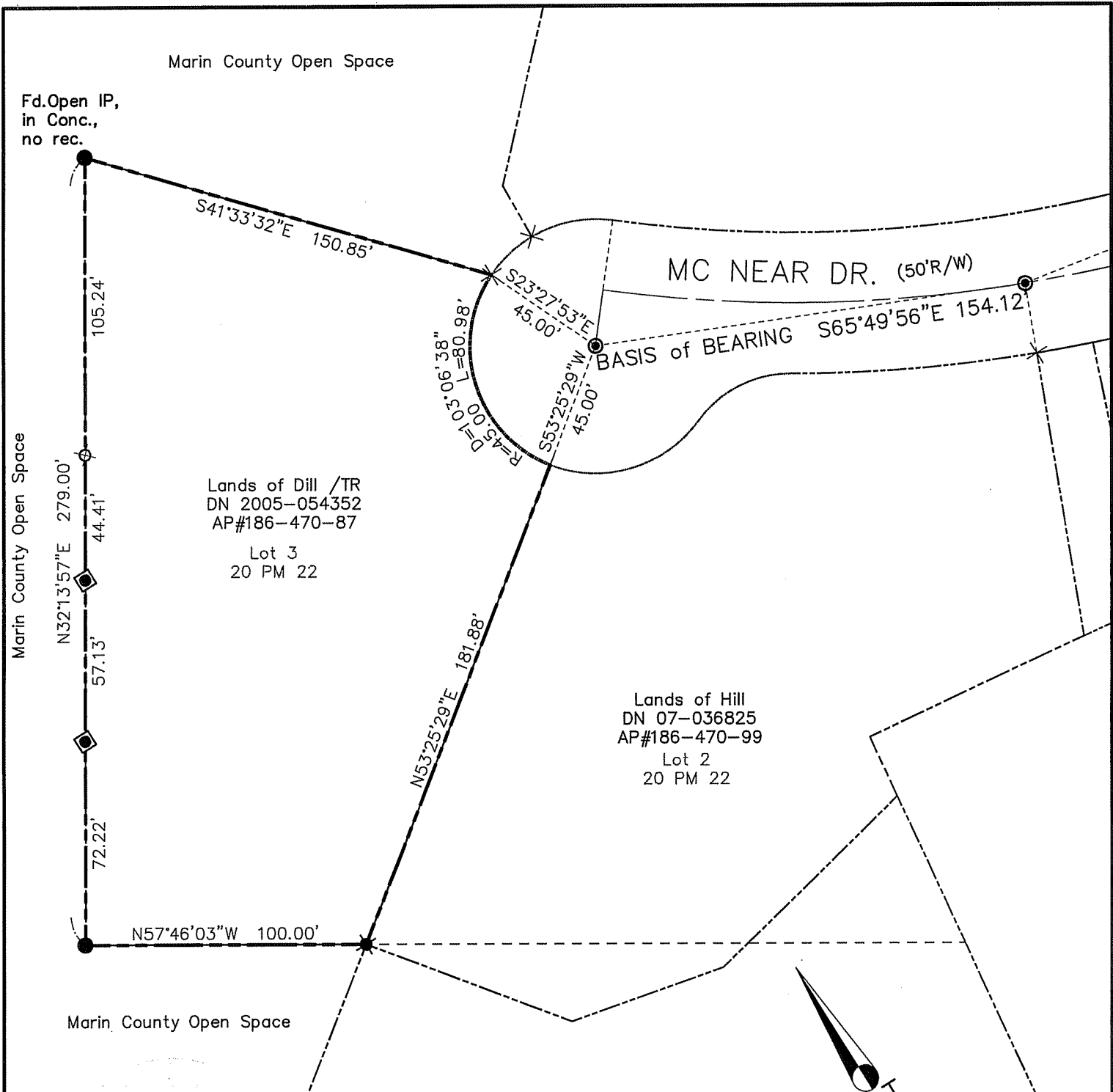


COUNTY SURVEYOR'S STATEMENT

This Corner Record was received OCTOBER 22, 2008
and examined and filed NOVEMBER 19, 2008
Signed [Signature] P.L.S. or R.C.E. No. 7128
Title COUNTY SURVEYOR



County Surveyor's Comment _____



E G E N D

- ⊙ FOUND STRT MONUMENT, PER 20 PM 22
- × FOUND CROSS-CUT, NO RECORD
- FOUND IP & PLUG, LS 3971 (U.N.O.) NO REC.
- ✱ FOUND REBAR & CAP, LS 4402, NO REC.
- ⊗ SET REBAR & CAP, RCE 30465
- SET 2x2 HUB & TACK

Note: All distances are in feet and decimals thereof.

SHEET	1	OF	1
SCALE:	1" = 50'	DESIGN:	PR
DATE:	Oct. 2008	DRAWN:	PR
FILE:	2008-097	CHECKED:	J.L.H

J.L. ENGINEERING
 CIVIL ENGINEERS—LAND SURVEYORS
 1539 4th ST., SAN RAFAEL, CA. 94901 (415) 457-6647

Corner Record

Lands of Hill /TR - 81 McNear Dr.
 APN 186-470-99, San Rafael, Marin County, CA