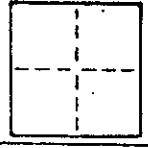


CORNER RECORD

COUNTY OF Marin T. _____ R. _____ MERIDIAN _____ CALIFORNIA

CORNER TYPE: GOVT. CORNER MEANDER RANCHO CONTROL OTHER

CORNER IDENTIFICATION — DATE OF VISIT _____ 19__



CORNER — LEFT AS FOUND FOUND AND TAGGED REESTABLISHED OBLITERATED CORNER REBUILT

PHYSICAL DESCRIPTION OF CORNER FOUND; EVIDENCE AND METHOD USED TO IDENTIFY OR REESTABLISH

Set redwood hub with L.S.2771 tag at most northerly corner of lands of Sobel as shown on Book 12 of official surveys at page 54, Marin County Records.

PHYSICAL DESCRIPTION OF MONUMENTS REBUILT OR PERPETUATED

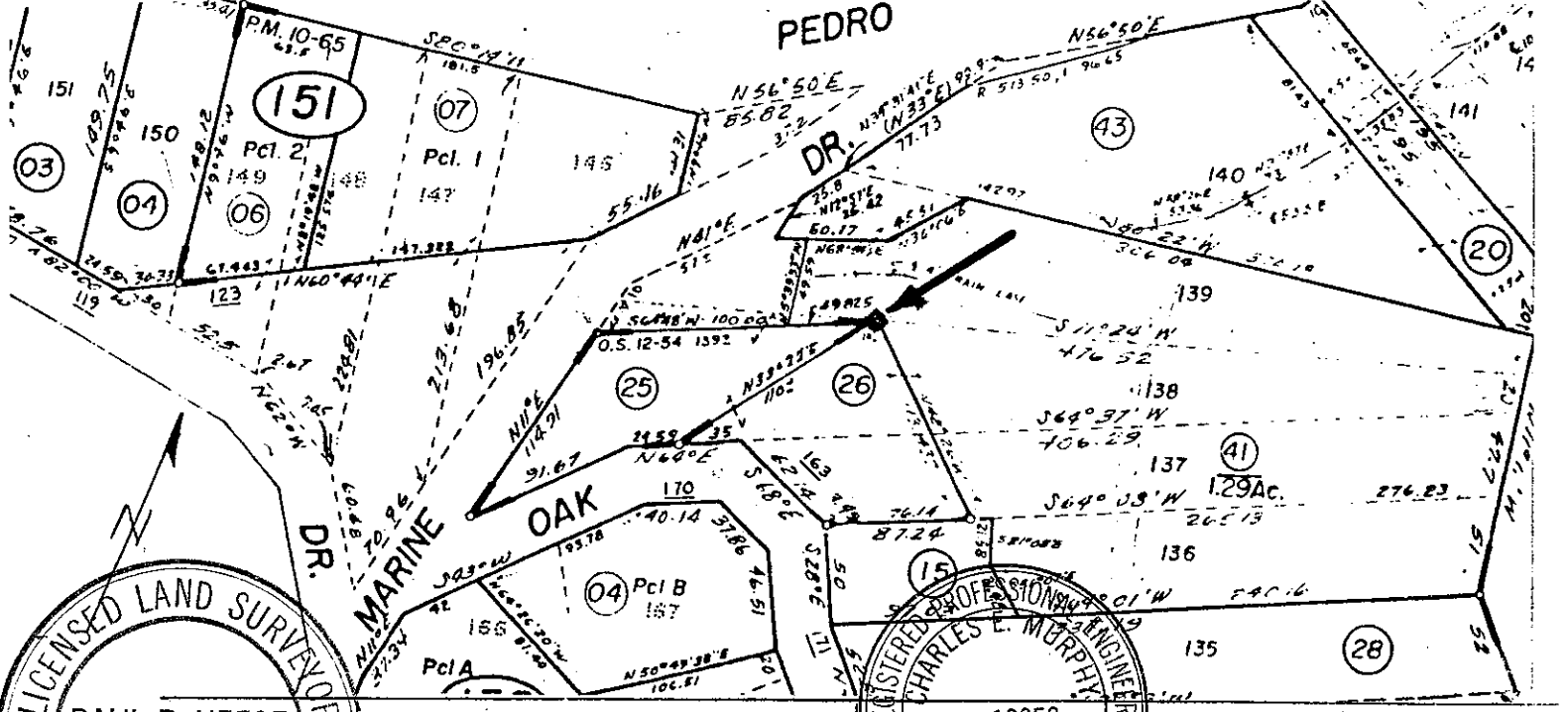
As Shown
A.P. 186-153-25

CALIFORNIA COORDINATE SYSTEM ORDER: FIRST SECOND THIRD

STATIONS USED: NGS (USC & GS) STATE COUNTY OTHER STATION _____ STATION _____

ZONE _____ ELEVATION _____ NORTHINGS (Y) _____ EASTINGS (X) _____

SKETCH: (Include reference tie or witness points, remarks and topo of area)



LICENSED LAND SURVEYOR
PAUL B. NEESE
STATE OF CALIFORNIA

SURVEYOR'S CERTIFICATE
THIS CORNER RECORD WAS PREPARED BY ME OR UNDER MY
DIRECTION IN CONFORMANCE WITH THE LAND SURVEYORS ACT
ON MAY 25 1987
SIGNED: Paul B. Neese
L.S. No. 2771
CAL. EXP. 6-30-88

REGISTERED PROFESSIONAL ENGINEER
CHARLES E. MURPHY
STATE OF CALIFORNIA

No. 18652 COUNTY SURVEYOR'S CERTIFICATE
THIS CORNER RECORD WAS RECEIVED _____ 19__
AND EXAMINED AND FILED _____ 1987
STATE OF CALIFORNIA
DOCUMENT No. _____
STATEMENT ON BACK OF SHEET YES NO

CORNER RECORD

COUNTY OF Marin T. _____ R. _____ MERIDIAN _____ CALIFORNIA
CORNER TYPE: GOVT. CORNER MEANDER RANCHO CONTROL OTHER
CORNER IDENTIFICATION -- DATE OF VISIT _____ 19____



CORNER -- LEFT AS FOUND FOUND AND TAGGED REESTABLISHED OBLITERATED CORNER REBUILT

PHYSICAL DESCRIPTION OF CORNER FOUND; EVIDENCE AND METHOD USED TO IDENTIFY OR REESTABLISH

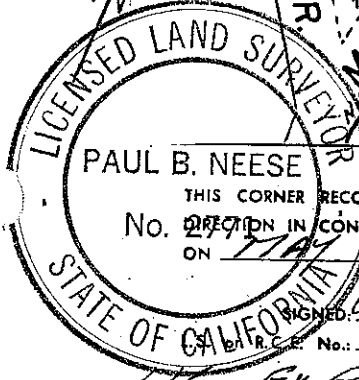
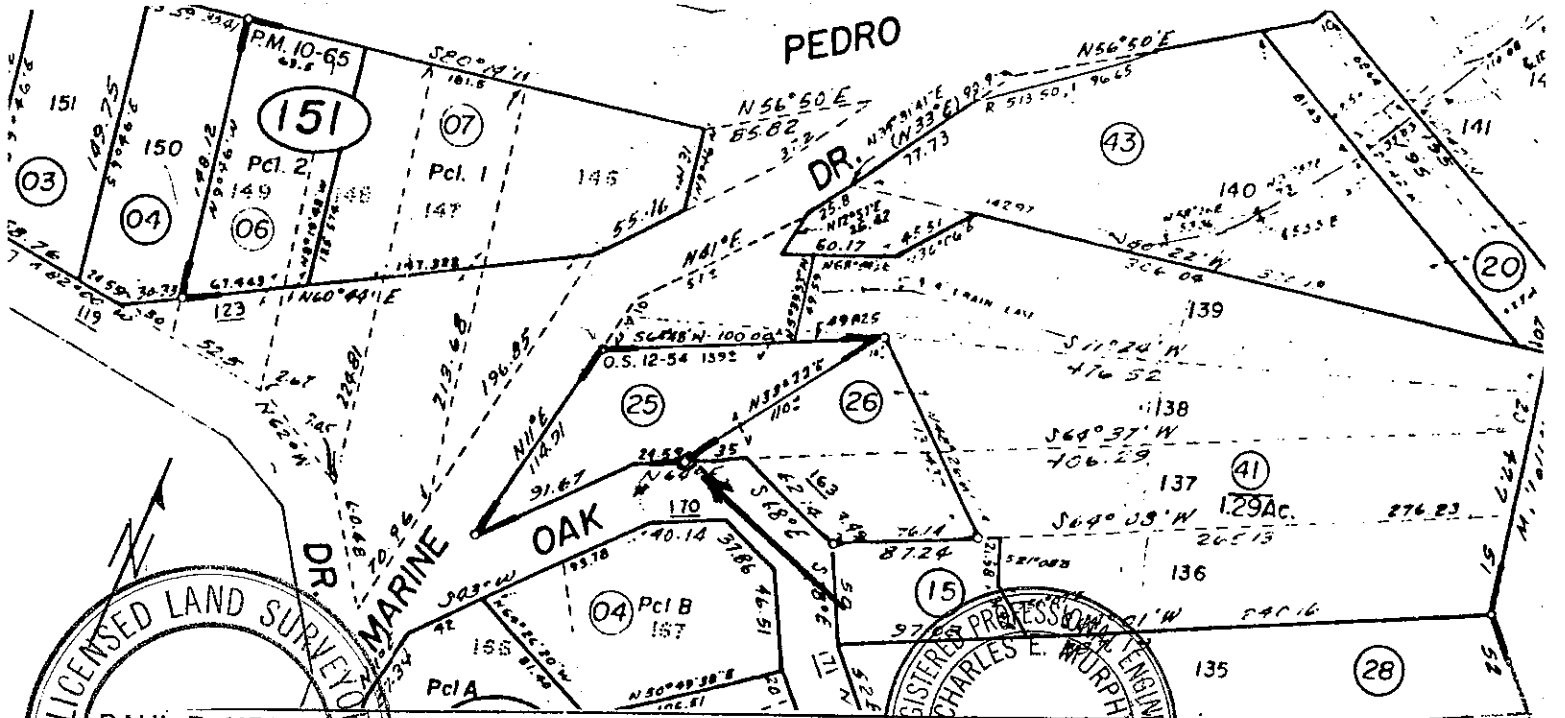
Set 3/4" copper pipe with L.S. 2771 tag at intersection of courses S 64° W 24.59 Ft and N 33° 22' E 109.648 Ft Lands of Sobel as shown on Book 12 of Official Surveys at page 54, Marin County Records. L.S. 2535 I.P. Bears N 21° 18' W 1.51 Ft.

PHYSICAL DESCRIPTION OF MONUMENTS REBUILT OR PERPETUATED

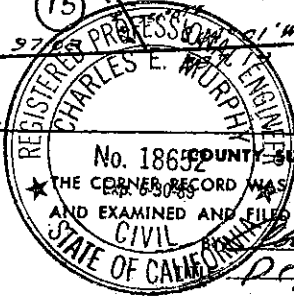
As Shown
A.P. 186-153-25

CALIFORNIA COORDINATE SYSTEM ORDER: FIRST SECOND THIRD
STATIONS USED: NGS (USC & GS) STATE COUNTY OTHER STATION _____ STATION _____
ZONE _____ ELEVATION _____ NORTHINGS (Y) _____ EASTINGS (X) _____

SKETCH: (Include reference tie or witness points, remarks and topo of area)



SURVEYOR'S CERTIFICATE
THIS CORNER RECORD WAS PREPARED BY ME OR UNDER MY
DIRECTION IN CONFORMANCE WITH THE LAND SURVEYORS ACT
ON MAY 25 1987
SIGNED: Paul B. Neese
L.S. No. 431, 2771
EXPIRES 6-30-88



COUNTY SURVEYOR'S CERTIFICATE
No. 18632
THE CORNER RECORD WAS RECEIVED _____ 19____
AND EXAMINED AND FILED _____
CIVIL _____
STATE OF CALIFORNIA
DOCUMENT No. _____
STATEMENT ON BACK OF SHEET YES NO

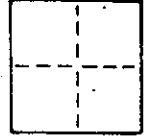
387

CORNER RECORD

COUNTY OF Marin T. _____ R. _____ MERIDIAN CALIFORNIA

CORNER TYPE: GOVT. CORNER MEANDER RANCHO CONTROL OTHER

CORNER IDENTIFICATION — DATE OF VISIT _____ 19__



CORNER — LEFT AS FOUND FOUND AND TAGGED REESTABLISHED OBLITERATED CORNER REBUILT

PHYSICAL DESCRIPTION OF CORNER FOUND; EVIDENCE AND METHOD USED TO IDENTIFY OR REESTABLISH

Set 3/4" copper pipe with L.S. 2771 Tag at intersection of courses S 42° W 91.763 Ft. and S 64° N 24.59 Ft. Lands of Sobel as shown on Book 12 of Official Surveys at Page 54, Marin County Records. L.S. 2535 I.P. bears N 19° 54' W 1.31 Ft.

PHYSICAL DESCRIPTION OF MONUMENTS REBUILT OR PERPETUATED

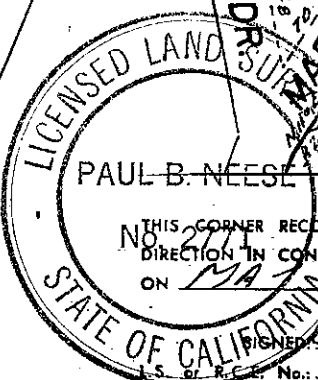
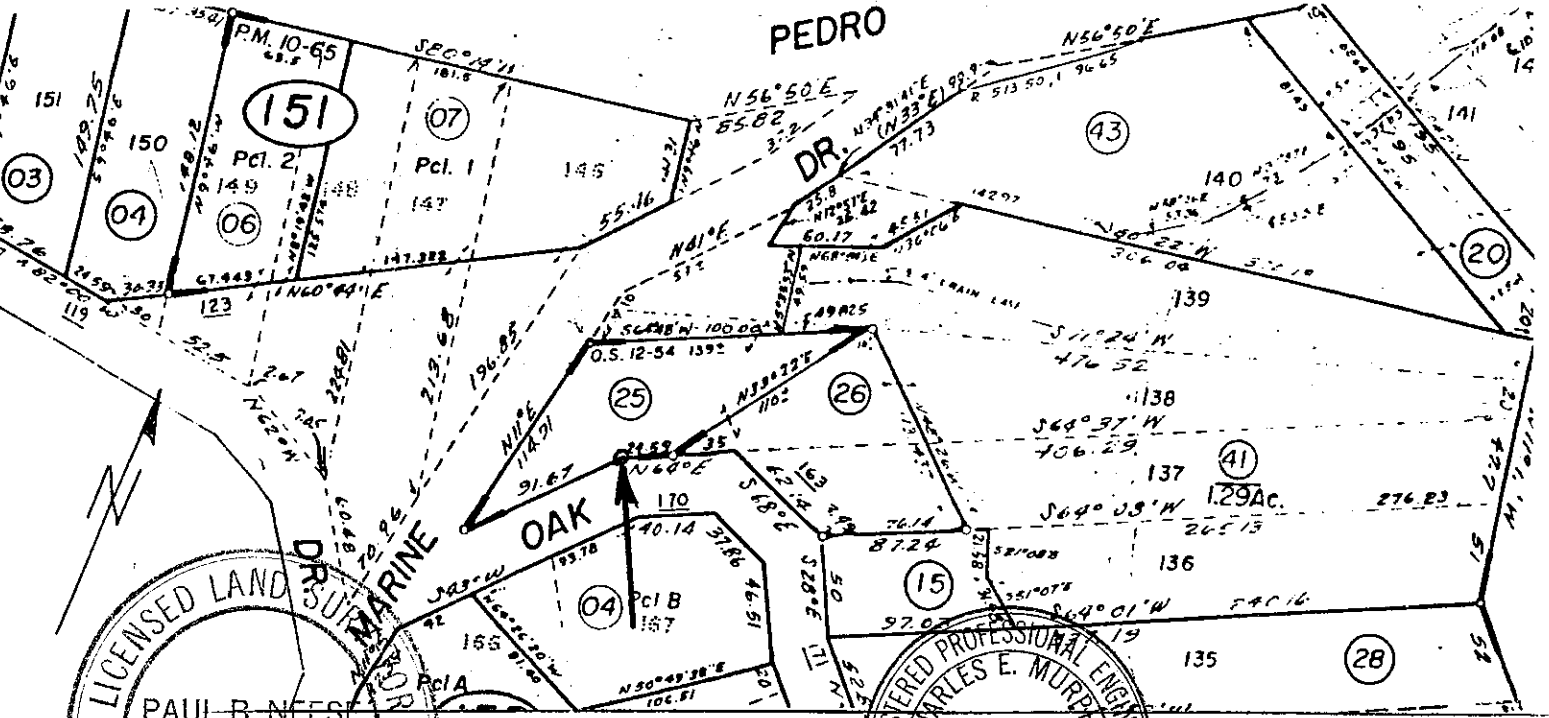
As Shown
A.P. 186-153-25

CALIFORNIA COORDINATE SYSTEM ORDER: FIRST SECOND THIRD

STATIONS USED: NGS (USC & GS) STATE COUNTY OTHER STATION _____ STATION _____

ZONE _____ ELEVATION _____ NORTHINGS (Y) _____ EASTINGS (X) _____

SKETCH: (Include reference tie or witness points, remarks and topo of area)



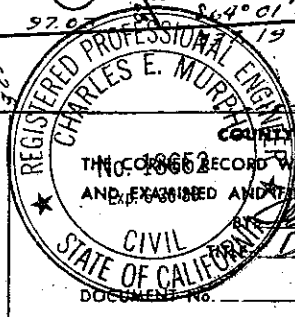
SURVEYOR'S CERTIFICATE

THIS CORNER RECORD WAS PREPARED BY ME OR UNDER MY DIRECTION IN CONFORMANCE WITH THE LAND SURVEYORS ACT ON MA 25 19 87

Paul B. Neese

L.S. 2771

LIC. EXP. 6-30-88



COUNTY SURVEYOR'S CERTIFICATE

THIS RECORD WAS RECEIVED _____ 19__ AND EXAMINED AND FILED _____ 19__

Charles E. Murphy

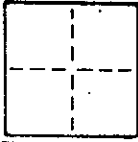
Dep. Co. Sur.

STATEMENT ON BACK OF SHEET YES NO

CORNER RECORD

7 of 7

COUNTY OF Marin T. _____ R. _____ MERIDIAN _____ CALIFORNIA
CORNER TYPE: GOV'T. CORNER MEANDER RANCHO CONTROL OTHER
CORNER IDENTIFICATION — DATE OF VISIT _____ 19____



CORNER — LEFT AS FOUND FOUND AND TAGGED REESTABLISHED OBLITERATED CORNER REBUILT

PHYSICAL DESCRIPTION OF CORNER FOUND; EVIDENCE AND METHOD USED TO IDENTIFY OR REESTABLISH

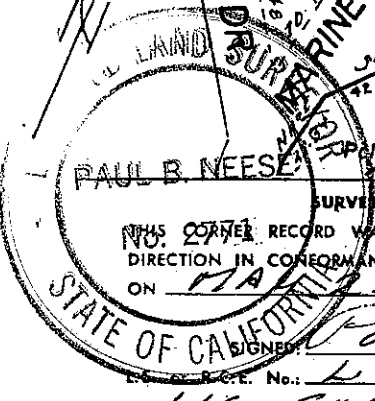
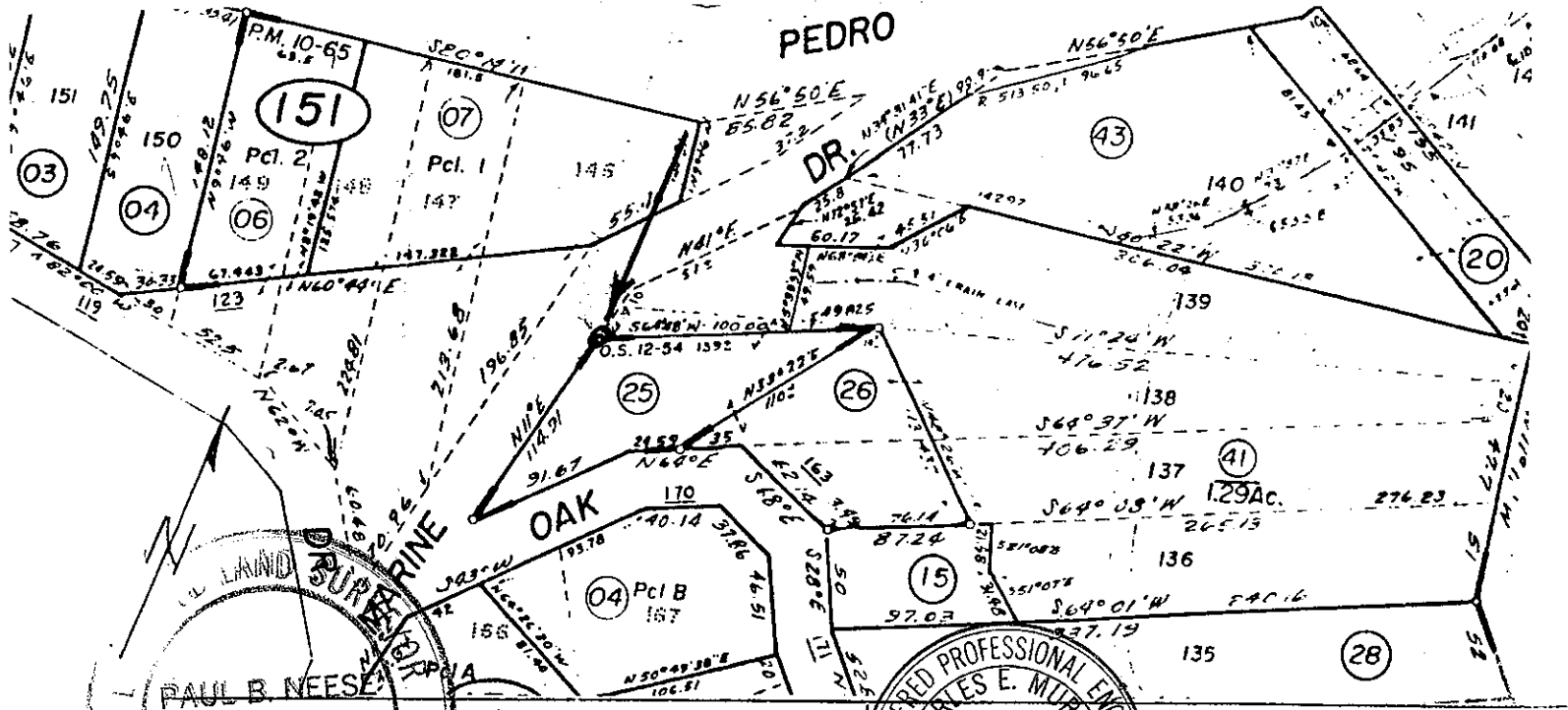
Set 3/4" copper pipe with L.S. 2771 tag to replace old hub at intersection of courses N 11° E 114.122 Ft. and S 64° 22' 45" W 135.34 Ft. Lands of Sobel as shown on Book 12 of Official Surveys at page 54, Marin County Records.

PHYSICAL DESCRIPTION OF MONUMENTS REBUILT OR PERPETUATED

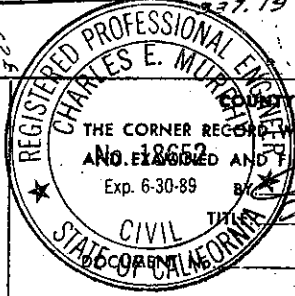
*AS SHOWN
A.P. 186-153-25*

CALIFORNIA COORDINATE SYSTEM ORDER: FIRST SECOND THIRD
STATIONS USED: NGS (USC & GS) STATE COUNTY OTHER STATION _____ STATION _____
ZONE _____ ELEVATION _____ NORTHINGS (Y) _____ EASTINGS (X) _____

SKETCH: (Include reference tie or witness points, remarks and topo of area)



SURVEYOR'S CERTIFICATE
THIS CORNER RECORD WAS PREPARED BY ME OR UNDER MY DIRECTION IN CONFORMANCE WITH THE LAND SURVEYORS ACT ON MAY 15 1987
SIGNED: Paul B. Neese
L.S. 2771
LIC EXP. 6-30-88



REGISTERED PROFESSIONAL ENGINEER
THE CORNER RECORD WAS RECEIVED _____ 19____
AND FILED 7-29 1987
Exp. 6-30-89
Charles E. Murphy
CIVIL ENGINEER
STATE OF CALIFORNIA
STATEMENT ON BACK OF SHEET YES NO