

L. A. Stevens & Associates, Inc.
Professional Land Surveyors
Novato, California

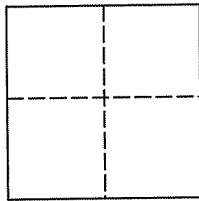
Lands of Going
Job #: 06-986

CORNER RECORD

Document Number 186-121-25

City of San Rafael, County of Marin, California

Brief Legal Description: Being a portion of Lot 20 of that certain map entitled "Map of Bayside Acres", filed for record April 29, 1911 in Volume 3 of Maps at Page 71, Marin County Records.



CORNER TYPE

Government Corner Control
Meander Property
Rancho Other

Date of Survey November 24, 2006

COORDINATES (Optional)

N _____
E _____
Zone _____ NAD27 NAD83
NAD 83 Epoch _____
Elev. _____
Vert. Datum: NGVD29 NAVD88
Meas. Units: Metric Imperial

Corner - Left as found Found and tagged Established Reestablished Rebuilt

Identification and type of corner found: Evidence used to identify or procedure used to establish or reestablish the corner:
See Page 2 of 2

A description of the physical condition of the monument as found and as set or reset:
See Page 2 of 2

SURVEYOR'S STATEMENT

This Corner Record was prepared by me or under my direction in conformance with
The Land Surveyor's Act on February 13, 2007.

Signed [Signature] P.L.S. 6649



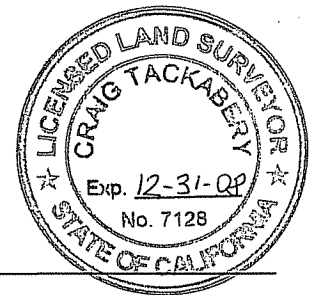
COUNTY SURVEYOR'S STATEMENT

This Corner Record was received December 28, 2007
and examined and filed APRIL 24, 2008

Signed [Signature] P.L.S. or P.C.E. No. 7128

Title COUNTY SURVEYOR

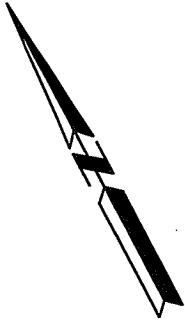
County Surveyors' Comment _____



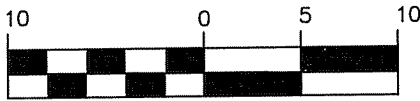
All distances shown are in feet and decimals thereof

LEGEND

- Set 3/4" Iron Pipe & Plastic Plug, Stamped "LS 6649"
- Found 3/4" Iron Pipe & Plastic Plug, Stamped "LS 6649"
- ✕ Found Monument, As Noted
- WM Water Meter
- BO Blow Off
- /— Edge of Pavement
- Rock Wall
- R1 37 ROS 3
- NTS Not To Scale
- △ Random Survey Control Point, From 37 ROS 3 Job File



GRAPHIC SCALE

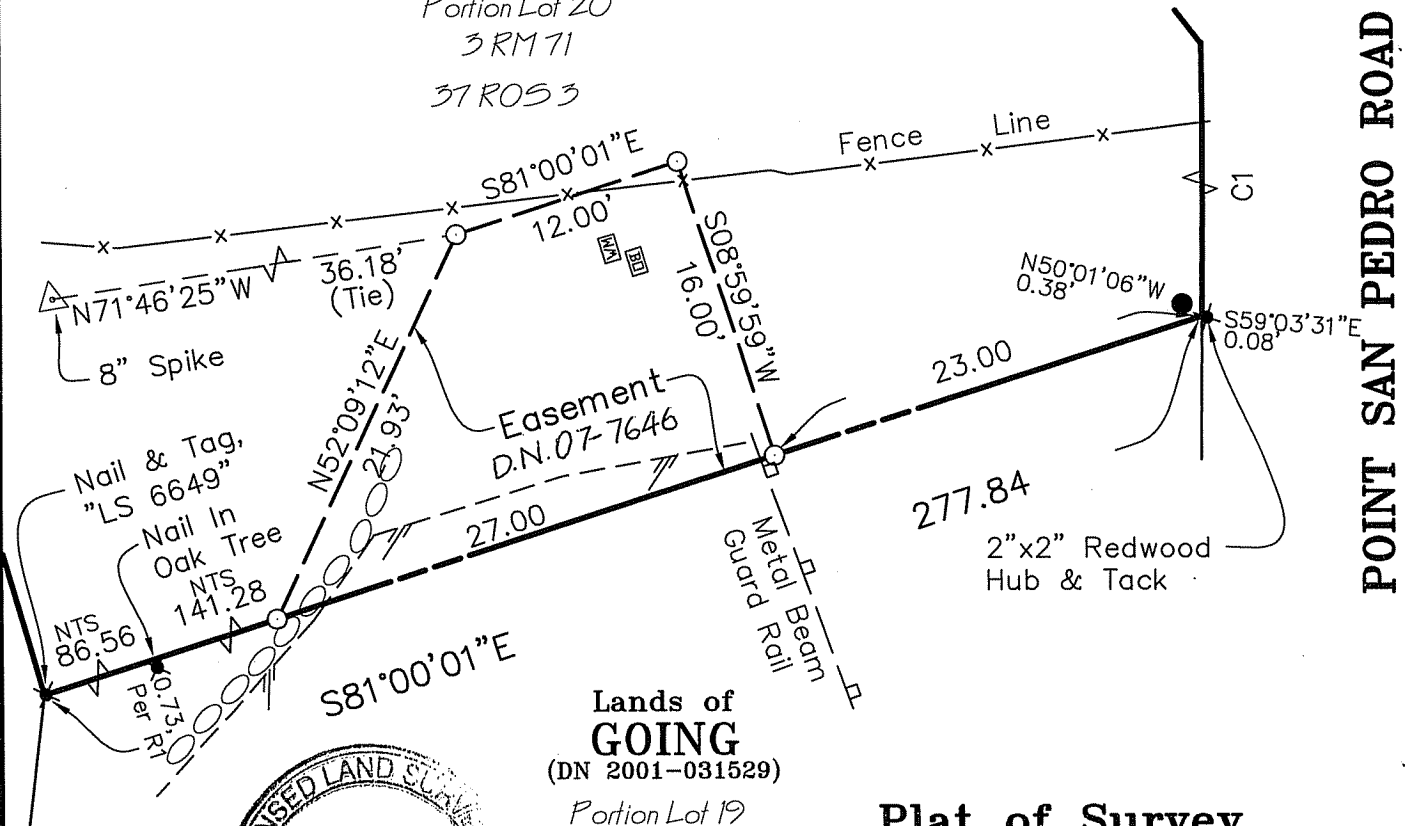


IN FEET

Lands of
THOMAS
(3204 O.R. 497)

Portion Lot 20
3 RM 71
37 ROS 3

CURVE TABLE			
CURVE	RADIUS	DELTA	LENGTH
C1	456.50	8°18'10"	66.15



POINT SAN PEDRO ROAD



Lawrence A. Stevens, PLS 6649
my license expires 12/31/07

Plat of Survey Lands of Going

(Portion of Lot 19, 3 RM 71)

San Rafael Marin County California
Scale: 1" = 10' December 2006
L.A. Stevens & Associates, Inc.
Professional Land Surveyors * (415) 382-7713
7 Commercial Blvd., Suite 1 * Novato, CA 94949
Job # 06-986