

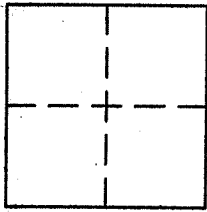
CORNER RECORD

Document Number APN 186-081-19

City of _____

County of MARIN, California

Brief Legal Description LOT 83, 3 RM 71



CORNER TYPE

Government Corner Control
Meander Property
Rancho Other
Date of Survey 7-11-07

COORDINATES (Optional)

N. _____
E. _____
Zone _____ NAD27 NAD83
NAD83 Epoch _____
Elev. _____
Vert. Datum: NGVD29 NAVD88
Meas. Units: Metric Imperial

Corner - Left as found Found and tagged Established Reestablished Rebuilt

Identification and type of corner found: Evidence used to identify or procedure used to establish or reestablish the corner:
FND. 3/4" I.P. AND TAG LS 3221 AS SHOWN ON 10 PM 60 AND ON REVERSE.

A description of the physical condition of the monument as found and as set or reset:
SET 2"X2" HUB AND TAG PLS 5296 LINE POINTS AS SHOWN ON REVERSE.

SURVEYOR'S STATEMENT

This Corner record was prepared by me or under my direction in conformance with the Land Surveyor's Act on JULY 12, , 2007

Signed [Signature] P.L.S. or R.C.E. No. PLS 5296

COUNTY SURVEYOR'S STATEMENT

This Corner Record was received SEPTEMBER 24, 2007

and examined and filed OCTOBER 25, 2007

Signed [Signature] P.L.S. or R.C.E. No. 7128

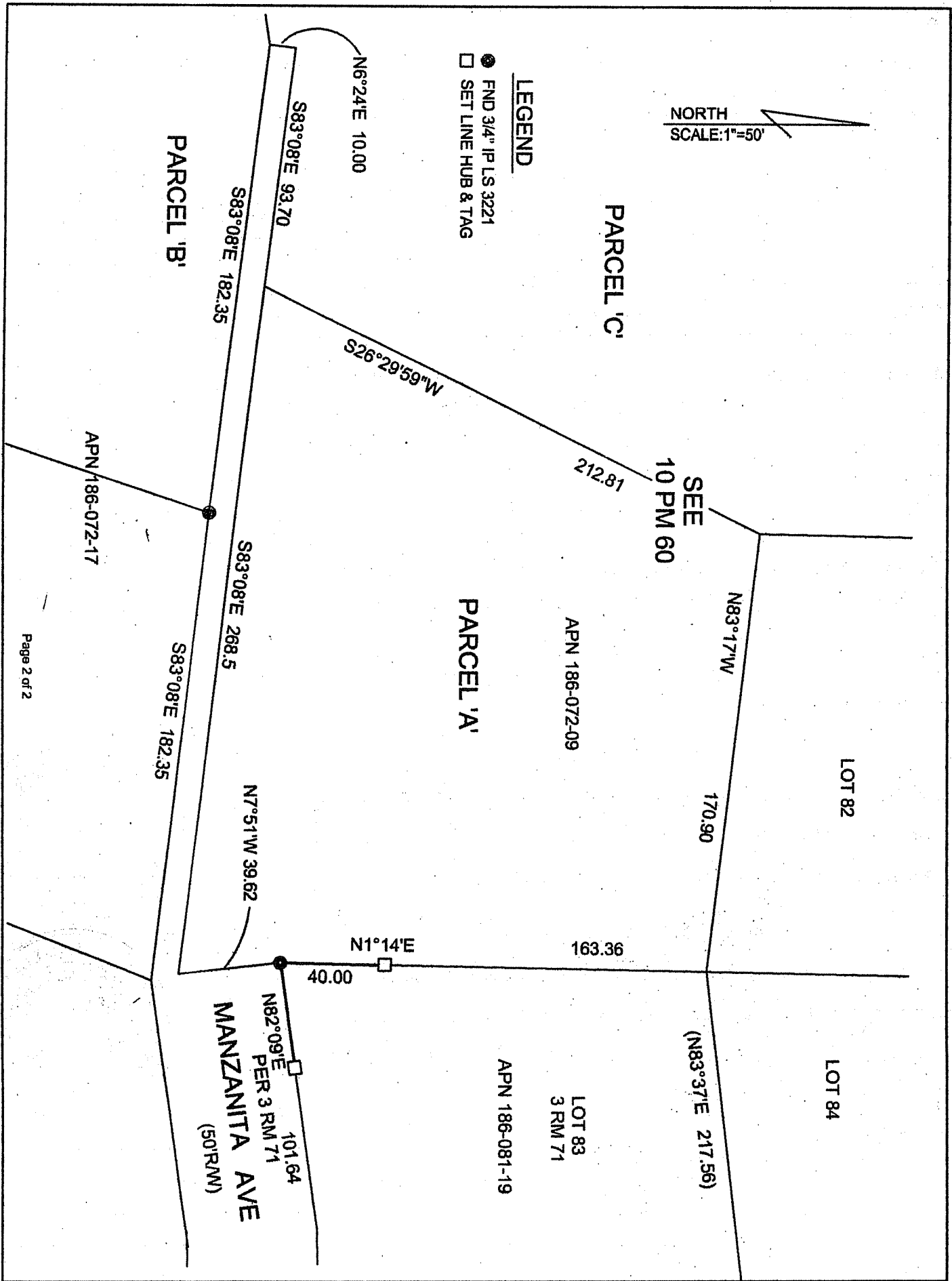
Title COUNTY SURVEYOR

County Surveyor's Comment _____



NORTH
SCALE: 1"=50'

LEGEND
● FND 3/4" IP LS 3221
□ SET LINE HUB & TAG



APN 186-072-17