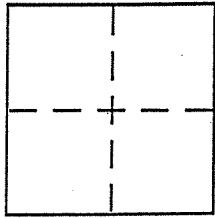


CORNER RECORD

APN 185-201-012
Document Number 12 MAPS 95
City of SAN RAFAEL County of MARIN, California

Brief Legal Description LOT 89, 12 MAPS 95, MARIN COUNTY RECORDS



CORNER TYPE

Government Corner Control
Meander Property
Rancho Other
Date of Survey APRIL 20, 2004

COORDINATES (Optional)

N. _____
E. _____
Zone _____ NAD27 NAD83
NAD83 Epoch _____
Elev. _____
Vert. Datum: NGVD29 NAVD88
Meas. Units: Metric Imperial

Corner - Left as found Found and tagged Established Reestablished Rebuilt

Identification and type of corner found: Evidence used to identify or procedure used to establish or reestablish the corner:

CORNERS DESIGNATED AS "A" & "B" (SHEET 2 OF 2) SET PER MONUMENTATION SHOWN UPON "MAP OF SEAVIEW HEIGHTS NO 2" RECORDED IN BOOK 12 OF MAPS AT PAGE 95, MARIN COUNTY RECORDS. [LINE POINTS SHOWN SET PER SAME MONUMENTATION]

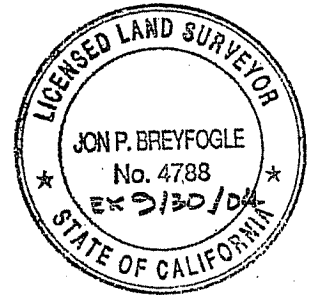
A description of the physical condition of the monument as found and as set or reset: (SEE SHEET 2 OF 2)

● DENOTES SET 3/4" IRON PIPE & PLUG "LS4788"
■ " SET REDWOOD HUB & TAG "LS4788"

SURVEYOR'S STATEMENT

This Corner Record was prepared by me or under my direction in conformance with the Land Surveyor's Act on APRIL 21, 2004.

Signed [Signature] P.L.S or R.C.E. No. 4788



COUNTY SURVEYOR'S STATEMENT

This Corner Record was received MAY 3, 2004

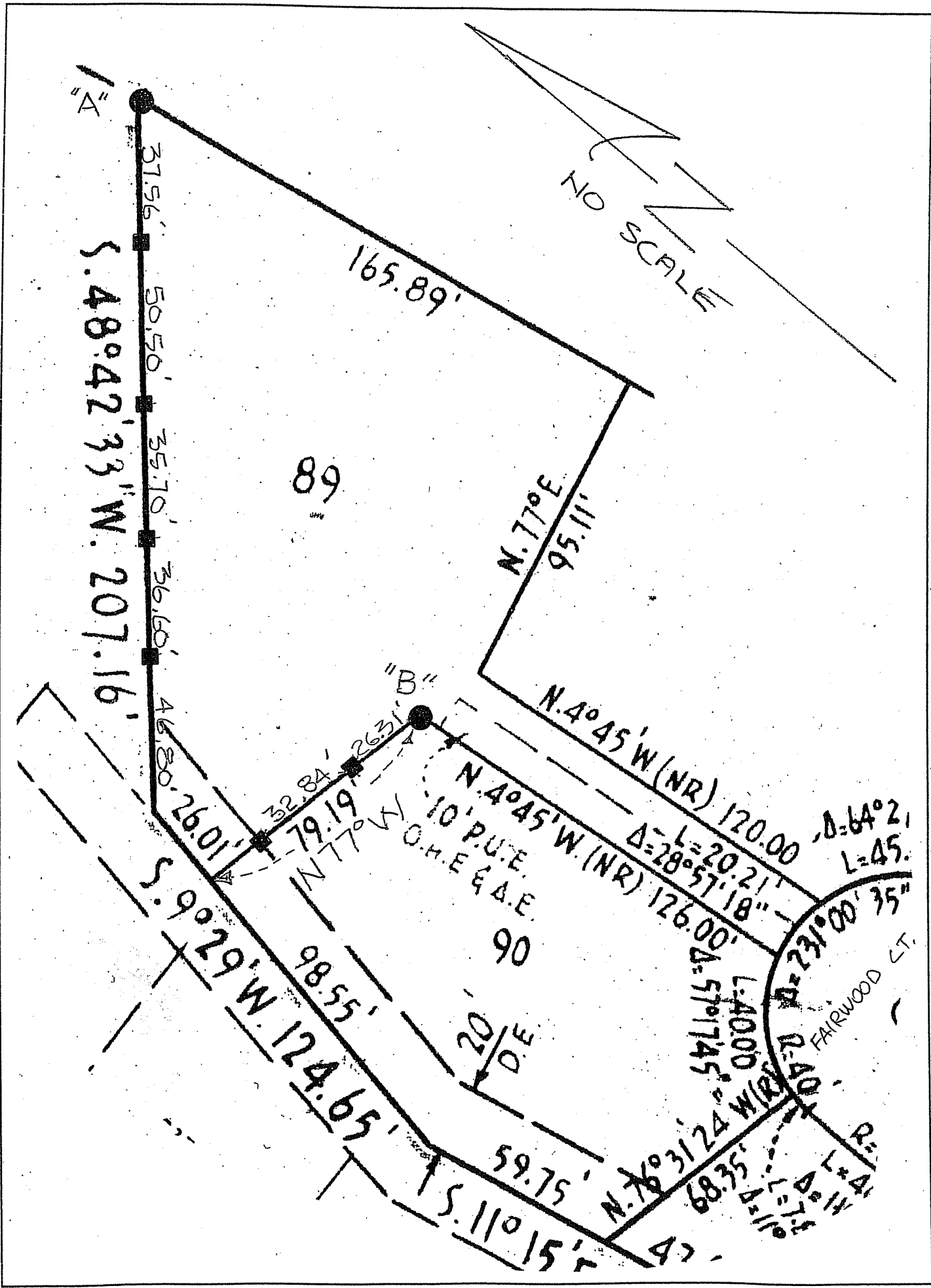
and examined and filed MAY 10, 2004

Signed [Signature] P.L.S or R.C.E. No. 7128

Title COUNTY SURVEYOR



County Surveyor's Comment _____



"A"
 315.6'
 50.50'
 35.70'
 36.60'
 46.80'
 S. 48° 42' 33" W. 207.16'

89

NO SCALE

"B"

165.89'
 N. 77° E. 95.11'
 N. 4° 45' W (NR) 120.00'
 N. 4° 45' W (NR) 126.00'
 S. 9° 29' W. 124.65'
 S. 11° 15' W. 59.75'
 32.84'
 26.31'
 79.19'
 10' P.U.E.
 C.H.E & D.E.
 90
 20' D.E.
 98.55'
 120.00'
 Δ = 28° 57' 18"
 L = 20.21'
 Δ = 64° 21'
 L = 45'
 231° 00' 35"
 FAIRWOOD ST.
 68.35'
 N. 76° 31' 24" W (R)
 L = 40.00'
 Δ = 57° 17' 45"
 47