

CORNER RECORD

Document Number

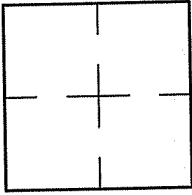
A.P. 185-201-02

City of SAN RAFAEL

County of MARIN, California

Brief Legal Description LOT 66 PER 12 R.M. 95

CORNER TYPE COORDINATES (Optional)



Government Corner

Control

Zone

N.
E.

NAD27

NAD83

Meander

Property

Elev.

Vert. Datum: NGVD29

NAVD88

Rancho

Other

Meas. Units: Metric

Imperial

Date of Survey 11/18/10

Corner: Left as found Found and tagged Established Reestablished Rebuilt

Identification and type of corner found: Evidence used to identify or procedure used to establish or reestablish the corner:

REESTABLISHED THE NORTHERLY AND THE EASTERLY LINES OF LOT 66 PER 12 R.M. 95 USING THE STREET MONUMENTS ON DRIFTWOOD COURT AND AS SHOWN ON SHEET 2.

A description of the physical condition of the monument as found and as set or reset: SEE SHEET 2.

SURVEYOR'S STATEMENT

This Corner Record was prepared by me or under my direction in conformance with

the Land Surveyor's Act on NOVEMBER 18, 2010.

Signed Lawrence P. Doyle P.L.S. 4694



COUNTY SURVEYOR'S STATEMENT

This Corner Record was received JANUARY 7, 2011

and examined and filed FEBRUARY 8, 2011

Signed [Signature] P.L.S. or R.C.E. No. 7128

Title COUNTY SURVEYOR

County Surveyor's Comment

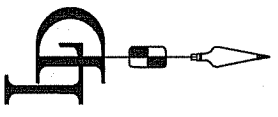
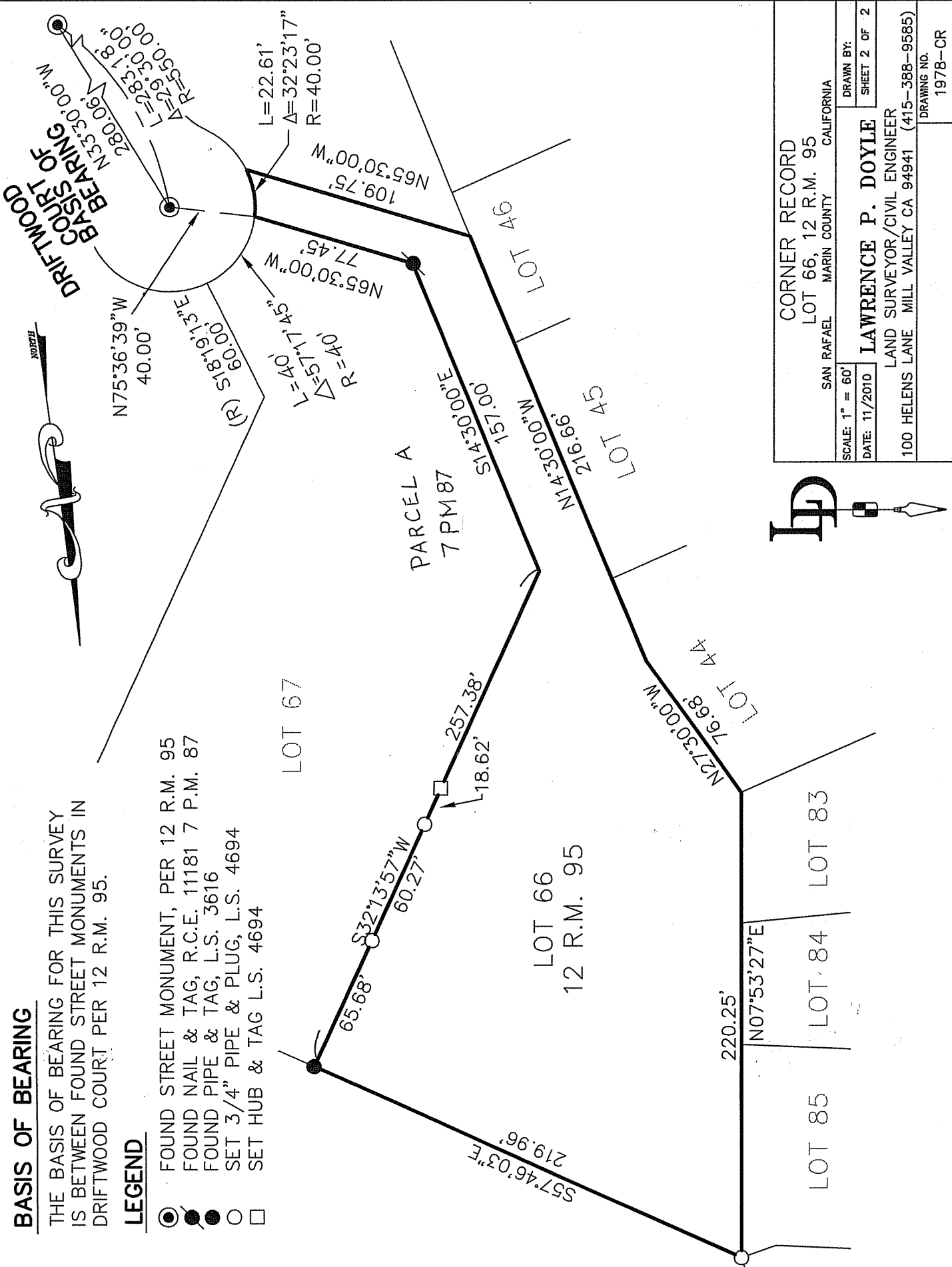


BASIS OF BEARING

THE BASIS OF BEARING FOR THIS SURVEY IS BETWEEN FOUND STREET MONUMENTS IN DRIFTWOOD COURT PER 12 R.M. 95.

LEGEND

- FOUND STREET MONUMENT, PER 12 R.M. 95
- FOUND NAIL & TAG, R.C.E. 11181 7 P.M. 87
- FOUND PIPE & TAG, L.S. 3616
- SET 3/4" PIPE & PLUG, L.S. 4694
- SET HUB & TAG L.S. 4694



CORNER RECORD	
LOT 66, 12 R.M. 95	
SAN RAFAEL MARIN COUNTY CALIFORNIA	DRAWN BY:
SCALE: 1" = 60'	SHEET 2 OF 2
DATE: 11/2010	
LAWRENCE P. DOYLE	
LAND SURVEYOR/CIVIL ENGINEER	
100 HELENS LANE MILL VALLEY CA 94941 (415-388-9585)	
DRAWING NO.	1978-CR