

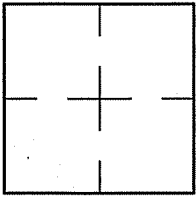
CORNER RECORD

Document Number A.P. 185-201-02

City of SAN RAFAEL

County of MARIN, California

Brief Legal Description LOT 66 PER 12 R.M. 95



CORNER TYPE

COORDINATES (Optional)

Government Corner  Control   
Meander  Property   
Rancho  Other   
Date of Survey 11/18/10

N. \_\_\_\_\_  
E. \_\_\_\_\_  
Zone \_\_\_\_\_ NAD27  NAD83   
NAD83 Epoch \_\_\_\_\_  
Elev. \_\_\_\_\_  
Vert. Datum: NGVD29  NAVD88   
Meas. Units: Metric  Imperial

Corner— Left as found  Found and tagged  Established  Reestablished  Rebuilt

Identification and type of corner found: Evidence used to identify or procedure used to establish or reestablish the corner:

REESTABLISHED THE NORTHERLY AND THE EASTERLY LINES OF LOT 66 PER 12 R.M. 95 USING THE STREET  
MONUMENTS ON DRIFTWOOD COURT AND AS SHOWN ON SHEET 2.

A description of the physical condition of the monument as found and as set or reset: SEE SHEET 2.

SURVEYOR'S STATEMENT

This Corner Record was prepared by me or under my direction in conformance with

the Land Surveyor's Act on NOVEMBER 18, 2010.

Signed Lawrence P. Doyle

P.L.S. 4694



COUNTY SURVEYOR'S STATEMENT

This Corner Record was received DECEMBER 8, 2010

and examined and filed JANUARY 6, 2011

Signed [Signature]

P.L.S. or R.C.E. No. 7128

Title COUNTY SURVEYOR



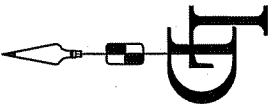
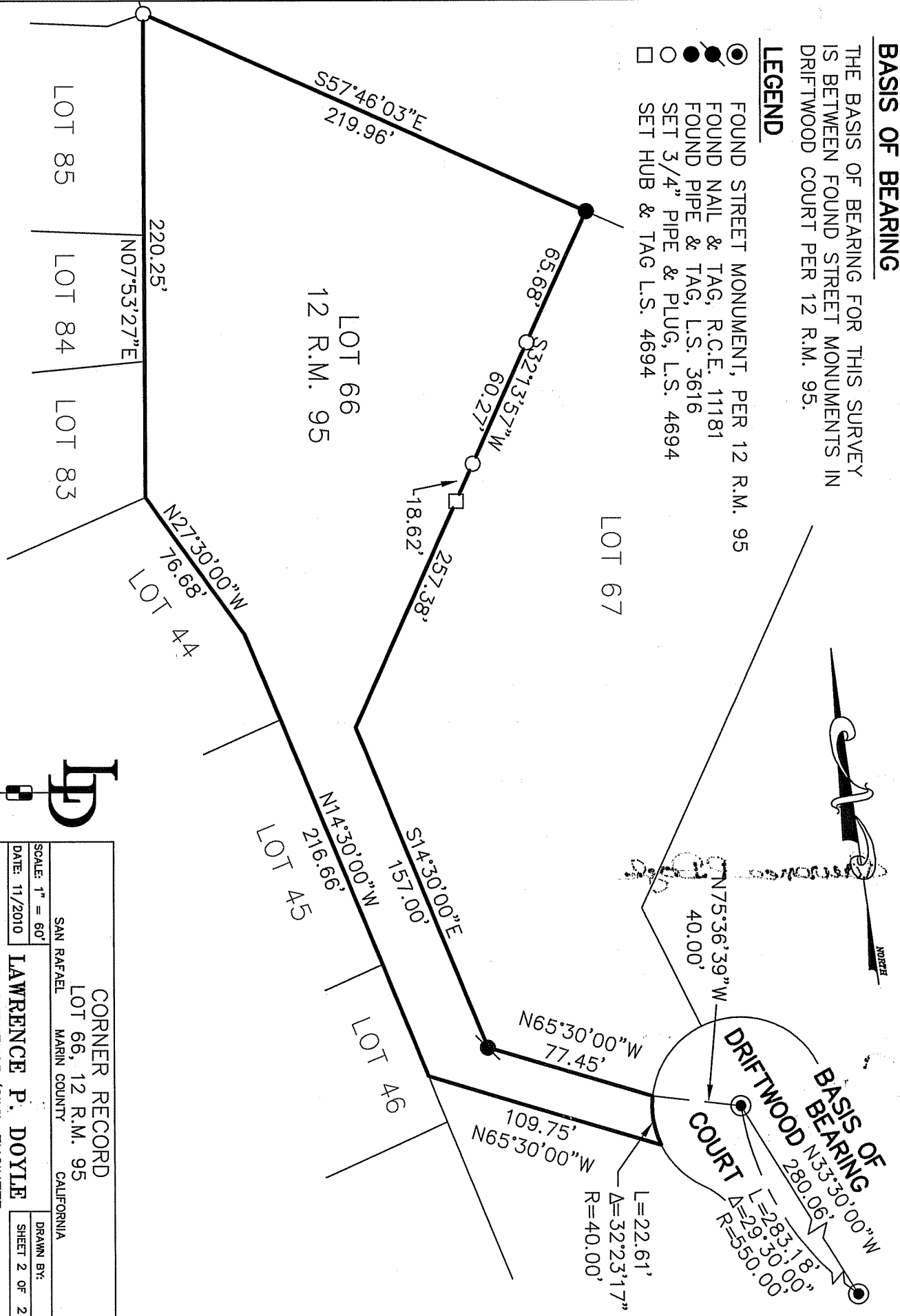
County Surveyor's Comment \_\_\_\_\_

**BASIS OF BEARING**

THE BASIS OF BEARING FOR THIS SURVEY IS BETWEEN FOUND STREET MONUMENTS IN DRIFTWOOD COURT PER 12 R.M. 95.

**LEGEND**

- FOUND STREET MONUMENT, PER 12 R.M. 95
- FOUND NAIL & TAG, R.C.E. 11181
- FOUND PIPE & TAG, L.S. 3616
- SET 3/4" PIPE & PLUG, L.S. 4694
- SET HUB & TAG L.S. 4694



<p>CORNER RECORD LOT 66, 12 R.M. 95 SAN RAFAEL MARIN COUNTY CALIFORNIA</p>	
<p>SCALE: 1" = 60' DATE: 11/2010</p>	<p>DRAWN BY: SHEET 2 OF 2</p>
<p>LAWRENCE P. DOYLE LAND SURVEYOR/CIVIL ENGINEER 100 HELENS LANE MILL VALLEY CA 94941 (415-388-9585)</p>	
<p>DRAWING NO. 1978-CR</p>	