

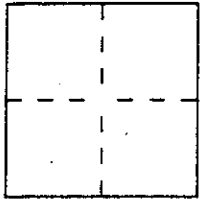
CORNER RECORD

Document Number A.P.# 185-192-05

City of SAN RAFAEL

County of MARIN, California

Brief Legal Description LOT 59 ~ 10 RM 80 AP# 185-192-05



CORNER TYPE

Government Corner Control
Meander Property
Rancho Other
Date of Survey 12-19-95

COORDINATES
(Optional)

N. _____
E. _____
Zone _____ Datum _____
Elev. _____

Corner — Left as found Found and tagged Established Reestablished Rebuilt

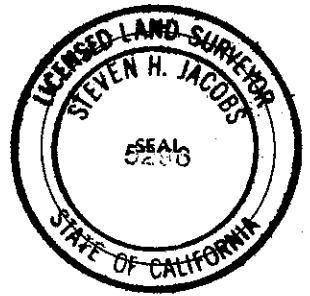
Identification and type of corner found: Evidence used to identify or procedure used to establish or reestablish the corner:
FOUND CENTERLINE MONUMENT AS SHOWN ON 10 RM 80 AND 11 RM 89.
FOUND CURB CUTS AS NOTED CORROBORATED CALCULATED PROPERTY
CORNER POSITIONS PER FOUND CENTERLINE MONUMENTS.

A description of the physical condition of the monument as found and as set or reset: SET 3/4" IRON PIPES
IN POSITIONS SHOWN, SET TACK AND TAG P.L.S. 5296 IN TOP 2"X4"
FENCE RUNNER S 21°30'E 1.65' FROM FENCE INTERSECTION

SURVEYOR'S STATEMENT

This Corner Record was prepared by me or under my direction in conformance with the Land Surveyors' Act of DECEMBER 21, 1995.

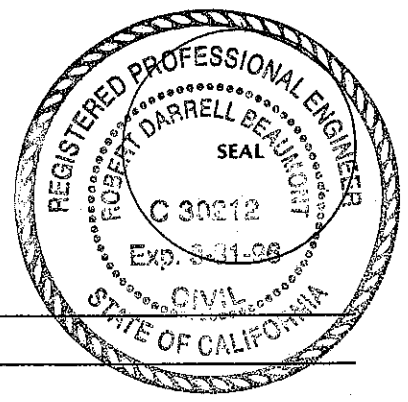
Signed Steven H. Jacobs L.S. or R.C.E. Number P.L.S. 5296



COUNTY SURVEYOR'S STATEMENT

This Corner Record was received JANUARY 31 1996 and examined and filed 2-7 1996.

Signed [Signature] Title DCS



County Surveyor's Comment _____

LEGEND

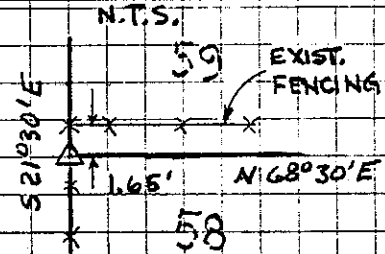
- ⊙ = STD. ST. MON. CONC. W/ BRASS PIN
- ⊖ = SET 3/4" I.P. P.L.S. 5296
- △ = SET TAG P.L.S. 5296 IN FENCE
- T = CURVE TANGENT
- ± = FND. CURB CUTS ± 0.25 FROM FACE CURB

SCALE: 1" = 100'

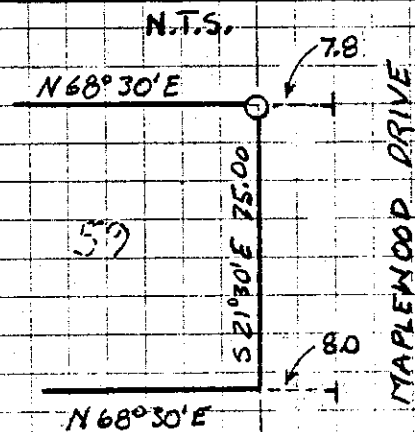
11 RM 89

R=875
 $\Delta = 5^{\circ}27'$
 L=83.23

SET TACK & TAG DETAIL



FOUND CURB CUTS DETAIL



10 RM 80