

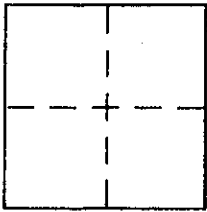
CORNER RECORD

Document Number AP. NO. 185-163-11

City of _____

County of MARIN, California

Brief Legal Description LOT 14, MAP OF GLENWOOD NO. 5, 11 RM 87



CORNER TYPE

Government Corner Control
 Meander Property
 Rancho Other
 Date of Survey _____

COORDINATES (Optional)

N. _____
 E. _____
 Zone _____ NAD27 NAD83
 NAD83 Epoch _____
 Elev. _____
 Vert. Datum: NGVD29 NAVD88
 Meas. Units: Metric Imperial

Corner - Left as found Found and tagged Established Reestablished Rebuilt

Identification and type of corner found: Evidence used to identify or procedure used to establish or reestablish the corner:

FOUND STANDARD STREET MONUMENTS
AS PER RECORD MAP (11 RM 87)

A description of the physical condition of the monument as found and as set or reset:

SET 3/4" IRON PIPES WITH PLASTIC CAPS, RCE 30465
SEE PAGE 2

SURVEYOR'S STATEMENT

This Corner Record was prepared by me or under my direction in conformance with the Land Surveyor's Act on SEPT. 6, 2002

Signed [Signature] P.L.S. of R.C.E. No. 30465



COUNTY SURVEYOR'S STATEMENT

This Corner Record was received AUGUST 16, 2002

and examined and filed SEPTEMBER 17, 2002

Signed [Signature] P.L.S. of R.C.E. No. 7128

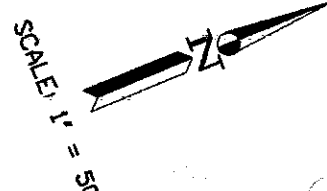
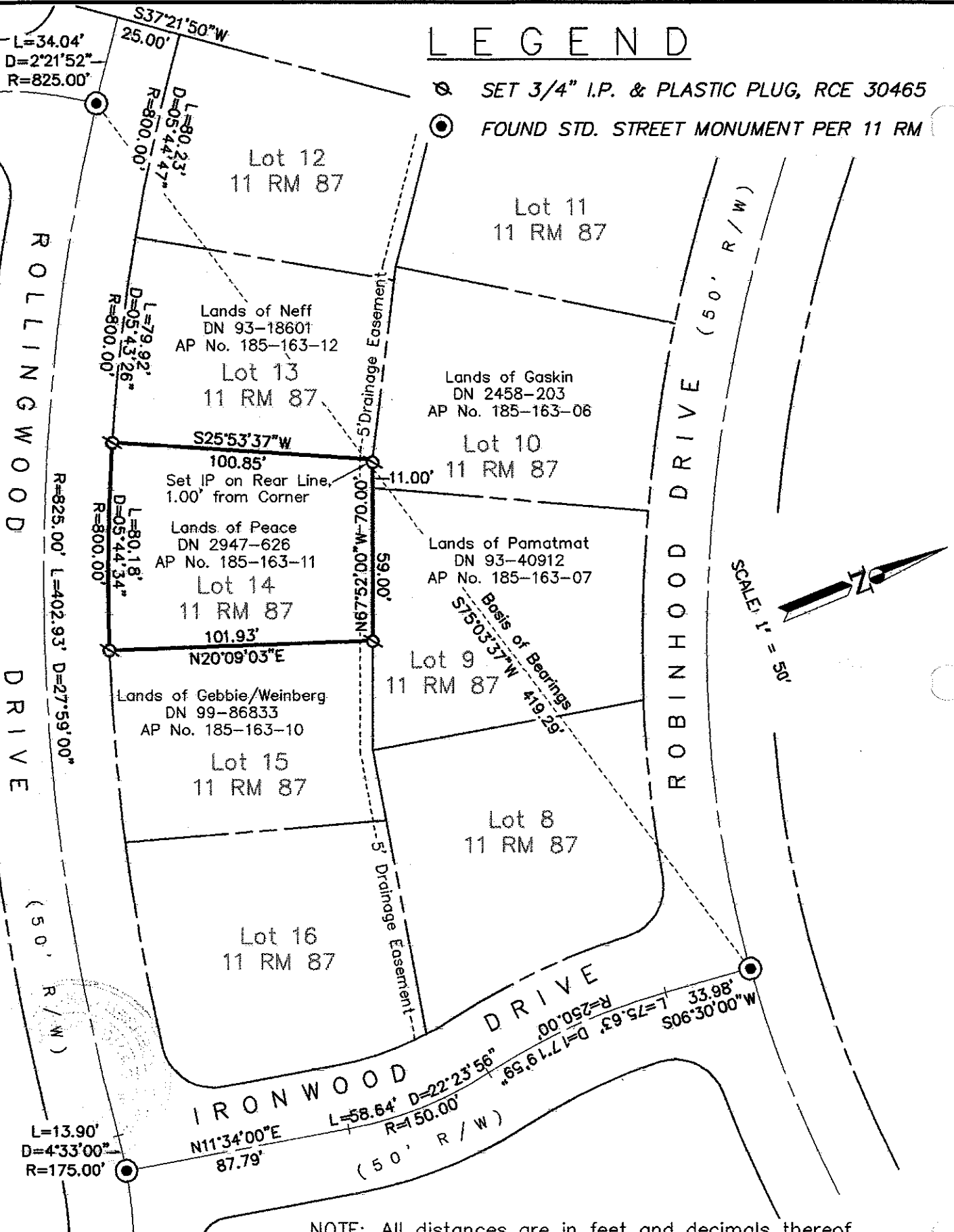
Title DEPUTY



County Surveyor's Comment _____

LEGEND

- ⊗ SET 3/4" I.P. & PLASTIC PLUG, RCE 30465
- ⊙ FOUND STD. STREET MONUMENT PER 11 RM



NOTE: All distances are in feet and decimals thereof.

1	OF	1	SHEETS
SCALE:	1" = 50'	DESIGN:	MDH
DATE:	9/06/02	DRAWN:	KMT
FILE:	2002-136	CHECKED:	JLH

J.L. ENGINEERING
CIVIL ENGINEERS-LAND SURVEYORS
 1539 4th ST., SAN RAFAEL, CA. 94901 (415) 457-6647

CORNER RECORD
 114 Rollingwood Drive, San Rafael
 AP No. 185-163-11