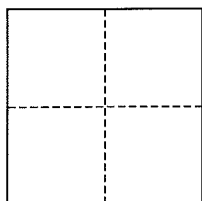


CORNER RECORD

City of San Rafael

Document Number AP# 185-161-12
County of Marin, California

Brief Legal Description Lot 61, 12 RM 5



CORNER TYPE

Government Corner Control
Meander Property
Rancho Other
Date of Survey May 19, 2015

COORDINATES (Optional)

N. _____
E. _____
Zone _____ NAD27 NAD83
NAD83 Epoch _____
Elev. _____
Vert. Datum: NGVD29 NAVD88
Meas. Units: Metric Imperial

Corner- Left as found Found and tagged Established Reestablished Rebuilt

Identification and type of corner found: Evidence used to identify or procedure used to establish or reestablish the corner:
Found original Standard Street Mons, per 12 RM 5.

A description of the physical condition of the monument as found and as set or reset: All Property Corners and Property Line points were set as shown hereon, per 12 RM 5.

SURVEYOR'S STATEMENT

This corner Record was prepared by me or under my direction in conformance with the Land Surveyor's Act on August 11, 2015

Signed [Signature] P.L.S. or R.C.E. No. 30465



COUNTY SURVEYOR'S STATEMENT

This Corner Record was received AUGUST 13, 2015

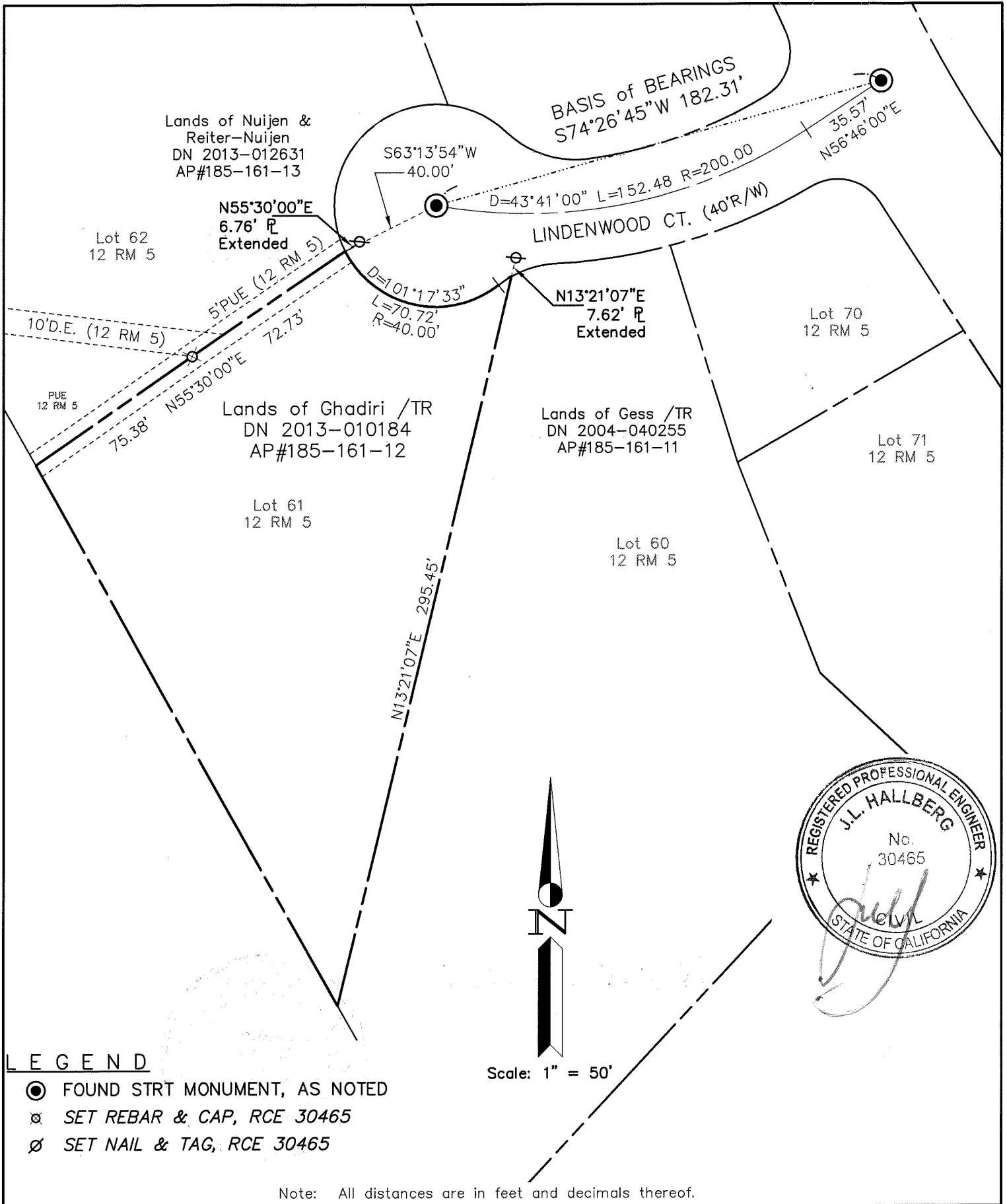
and examined and filed OCTOBER 1, 2015

Signed [Signature] P.L.S. or R.C.E. No. 7821

Title County Surveyor



County Surveyor's Comment _____



| | | | |
|--------|----------|----------|-------|
| SHEET | 1 | OF | 1 |
| SCALE: | 1" = 50' | DESIGN: | PR |
| DATE: | May 2015 | DRAWN: | PR |
| FILE: | 2015-042 | CHECKED: | J.L.H |

2015-042\DWG\2015-042-BASE,COR-REC

J.L. ENGINEERING
 CIVIL ENGINEERS-LAND SURVEYORS
 1539 4th ST., SAN RAFAEL, CA. 94901 (415) 457-6647

Corner Record
 Lands of Ghadiri /TR - 11 Lindenwood Ct.
 APN 185-161-12, San Rafael, Marin County, CA