

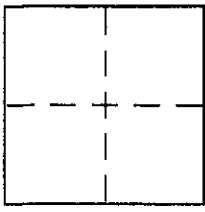
CORNER RECORD

Document Number A.P.N. 185-145-11

City of SAN RAFAEL

County of MARIN, California

Brief Legal Description LOT 53 PER 9 R.M. 1



CORNER TYPE

Government Corner Control
Meander Property
Rancho Other
Date of Survey 10-8-02

COORDINATES (Optional)

N. _____
E. _____
Zone _____ NAD27 NAD83
NAD83 Epoch _____
Elev. _____
Vert. Datum: NGVD29 NAVD88
Meas. Units: Metric Imperial

Corner - Left as found Found and tagged Established Reestablished Rebuilt

Identification and type of corner found: Evidence used to identify or procedure used to establish or reestablish the corner:

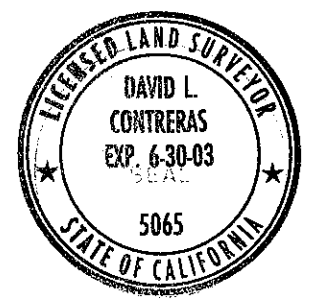
= SEE OVER =

A description of the physical condition of the monument as found and as set or reset:

= SEE OVER =

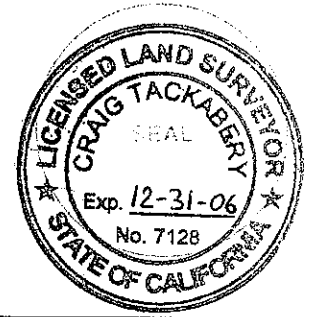
SURVEYOR'S STATEMENT

This Corner Record was prepared by me or under my direction in conformance with the Land Surveyor's Act on NOVEMBER 17 2002
Signed David Contreras P.L.S or R.C.E. No. 5065

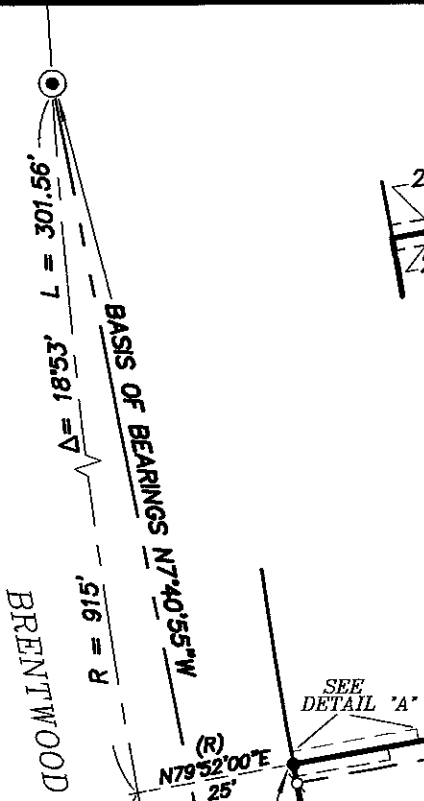
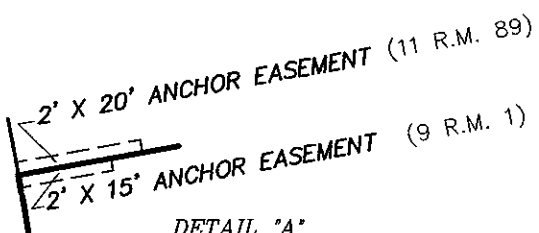


COUNTY SURVEYOR'S STATEMENT

This Corner Record was received NOVEMBER 21, 2002
and examined and filed NOVEMBER 27, 2002
Signed [Signature] P.L.S or R.C.E. No. 7128
Title DEPUTY



County Surveyor's Comment _____

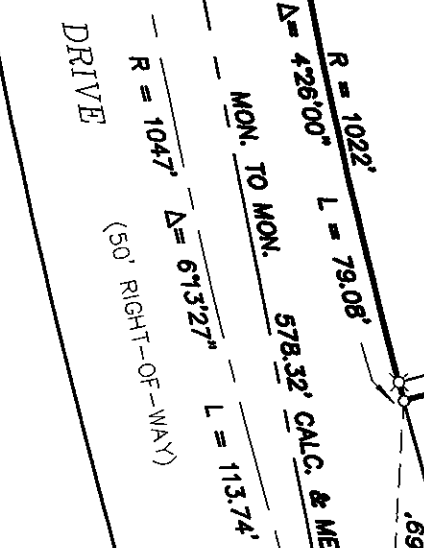


LOT 14
11 R.M. 89

LOT 53
9 R.M. 1

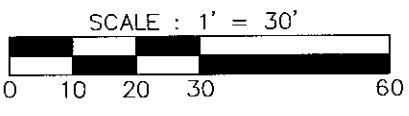
LOT 63
9 R.M. 1

LOT 54
9 R.M. 1



MON. PAVED OVER;
DID NOT DIG OUT

- LEGEND**
- ⊙ = FOUND STANDARD STREET MONUMENT
 - = FOUND 5/8" REBAR, NO TAG
 - = SET 1/2" REBAR, LS 5065
 - ⊗ = SET NAIL AND TAG, LS 5065 IN CONC. OR AS NOTED
 - ⊕ = SET BRIDGE SPIKE



SET NAIL AND TAG
AT TOP OF FENCE

