

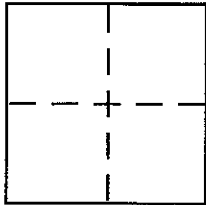
CORNER RECORD

Document Number A.P. # 185-142-02

City of San Rafael

County of Marin, California

Brief Legal Description Lot 49, Glenwood No. 2 San Rafael, Marin County, California,
filed January 3, 1956 in Book 9 of Maps, Page 1



CORNER TYPE

Government Corner Control
 Meander Property
 Rancho Other
 Date of Survey 8/16/99

COORDINATES (Optional)

N. _____
 E. _____
 Zone _____ NAD27 NAD83
 NAD83 Epoch _____
 Elev. _____
 Vert. Datum: NGVD29 NAVD88
 Meas. Units: Metric Imperial

Corner - Left as found Found and tagged Established Reestablished Rebuilt

Identification and type of corner found: Evidence used to identify or procedure used to establish or reestablish the corner:

See Exhibit "A" on reverse side

A description of the physical condition of the monument as found and as set or reset:

See Exhibit "A" on reverse side

SURVEYOR'S STATEMENT

This Corner Record was prepared by me or under my direction in conformance with the Land Surveyor's Act on September 7 1999

Signed Paul Canumay P.L.S. or ~~P.L.S.~~ No. 3272

COUNTY SURVEYOR'S STATEMENT

This Corner Record was received SEPTEMBER 14

and examined and filed SEPTEMBER 15

Signed John M. Wooley P.L.S. or R.C.E. No. 26450

Title DEPUTY

County Surveyor's Comment _____

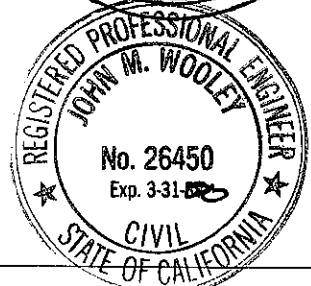
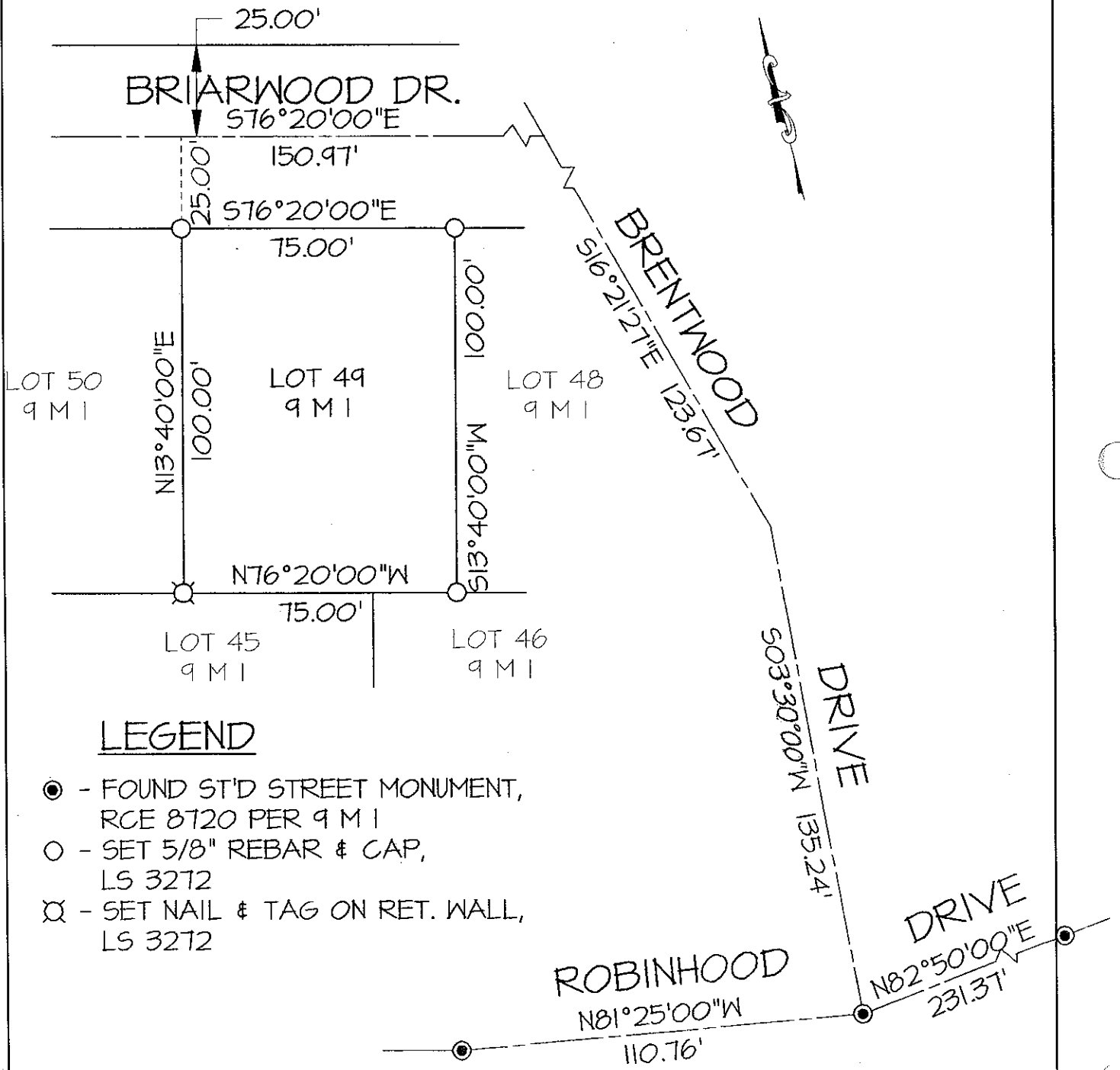


EXHIBIT "A"



LEGEND

- - FOUND ST'D STREET MONUMENT, RCE 8720 PER 9 M I
- - SET 5/8" REBAR & CAP, LS 3272
- ⊗ - SET NAIL & TAG ON RET. WALL, LS 3272

SCALE: 1"=40'
#10676