

**CORNER RECORD**

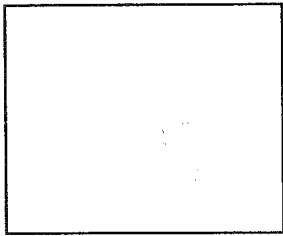
Document Number 185-111-21

City of Mill Valley

County of Marin,

State of California

Brief Legal Description: Lot 105 as shown on that "Map A Resubdivision Of Lots 20 Through 55 And Lots 64-76, As Shown On Map Marin Bay, filed in Map Book 12, at Page 73, Marin County Records"



Corner Type

Coordinates (optional)

Government Corner  Control

N.

Meander  Property

E.

Rancho  Other

Zone \_\_\_\_\_ Datum

Date of Survey May 20, 2014

Elev.

Corner - Left as found  Found and tagged  Established  Reestablished  Rebuilt

Identification and type of corner found; Evidence used to identify or procedure used to establish or re-establish the corner: Using Record information from that "Map A Resubdivision Of Lots 20 Through 55 And Lots 64-76, As Shown On Map Marin Bay, filed in Map Book 12, at Page 73, Marin County Records, recalculated the lot corners based upon record information and found centerline monumentation as shown on said map.

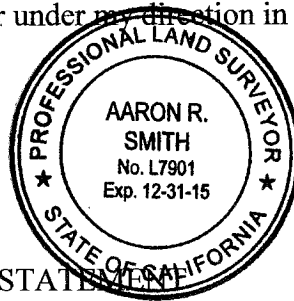
A description of the physical condition of the monument as found and as set or reset:

No monuments were found at lot corners. Set 1/2" brass tag "PLS 7901" in top rail of wood fence at most southerly lot corner; Set 3/4" iron pipes with cap "PLS 7901" at all other lot corners with the exception of the southerly beginning of curve where 3/4" iron pipe with cap "PLS 7901" was set 2.00' from curve begin on southerly line referencing the curve, also set a 3/4" iron pipe with cap "PLS 7901" on the easterly property line 36.26' northerly from the above mentioned 1/2" brass tag.

**SURVEYOR'S STATEMENT**

This Corner Record was prepared by me or under my direction in conformance with the Land Surveyor's Act on July 30, 2014.

Signed: Aaron R. Smith  
Aaron R. Smith, PLS 7901,  
my license expires 12/31/15



**COUNTY SURVEYOR'S STATEMENT**

This Corner Record was received August 21, 2014 and examined and filed OCTOBER 15, 2014.

Signed Richard G. Simonitch County Surveyor, Marin County  
by Deputy: Craig Tackabery, PLS 7128  
my license expires 12/31/14



County Surveyor's Comment:

# Corner Record

## LEGEND:

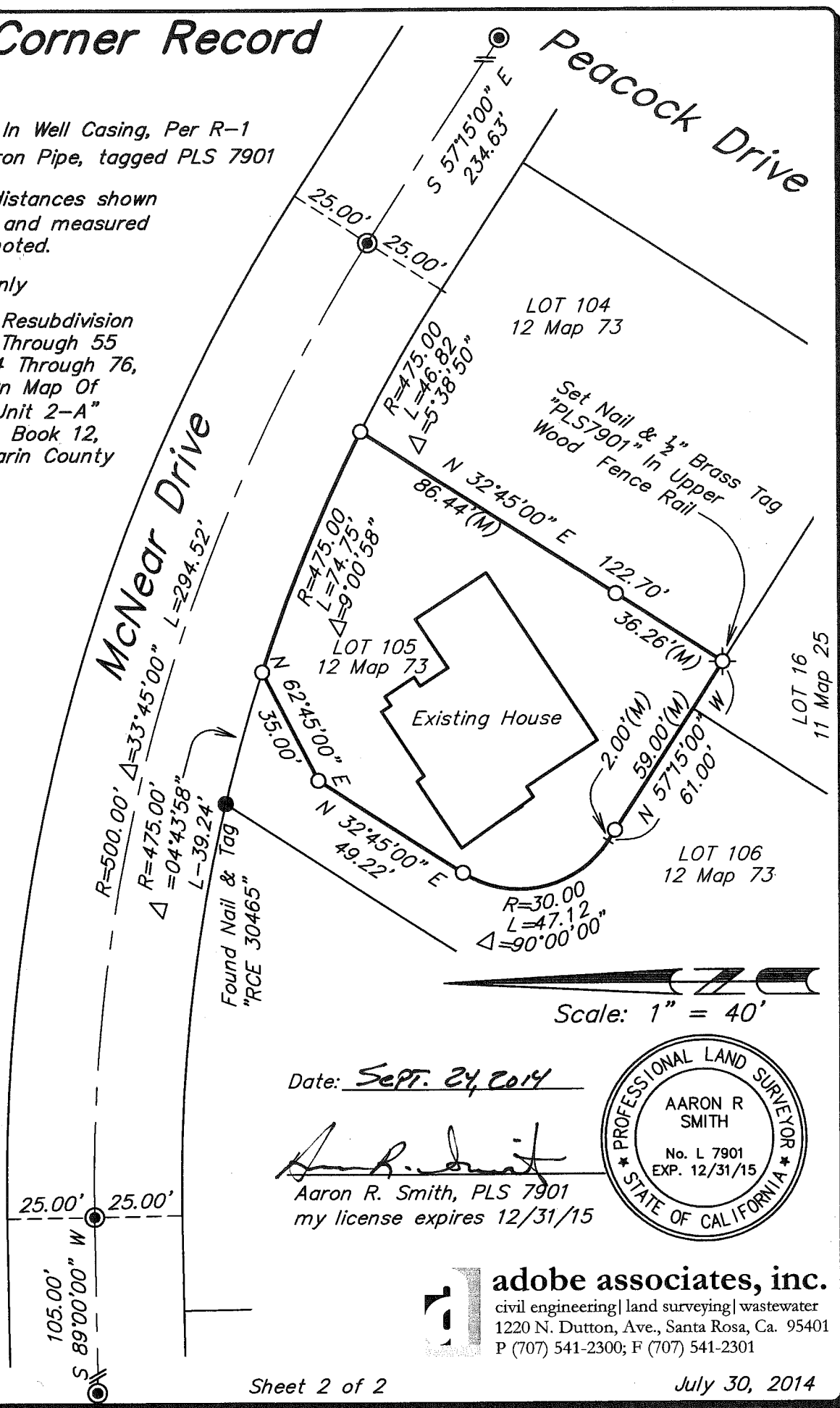
- Found Nail In Well Casing, Per R-1
- Set 3/4" Iron Pipe, tagged PLS 7901

All bearings and distances shown are Record (R-1) and measured unless otherwise noted.

(M) Measured Only

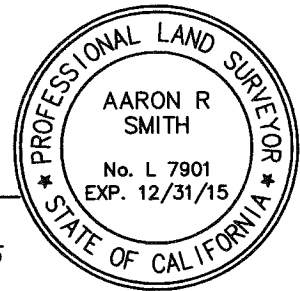
R-1: "Map Of A Resubdivision Of Lots 20 Through 55 And Lots 64 Through 76, As Shown On Map Of Marin Bay, Unit 2-A" Filed In Map Book 12, Page 73, Marin County Records

File: T:\2014 PROJECTS\14124\dwg\Adobe-Survey\14124-CR-20140730.dwg Time: Sep 23, 2014 - 10:15am



Date: Sept. 24, 2014

*Aaron R. Smith*  
 Aaron R. Smith, PLS 7901  
 my license expires 12/31/15



**adobe associates, inc.**  
 civil engineering | land surveying | wastewater  
 1220 N. Dutton, Ave., Santa Rosa, Ca. 95401  
 P (707) 541-2300; F (707) 541-2301