

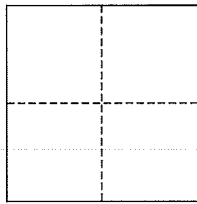
CORNER RECORD

City of San Rafael

Document Number AP# 185-111-19

County of Marin, California

Brief Legal Description Lot 107, 12-RM-73



CORNER TYPE

Government Corner Control
Meander Property
Rancho Other
Date of Survey _____

COORDINATES (Optional)

N. _____
E. _____
Zone _____ NAD27 NAD83
NAD83 Epoch _____
Elev. _____
Vert. Datum: NGVD29 NAVD88
Meas. Units: Metric Imperial

Corner- Left as found Found and tagged Established Reestablished Rebuilt

Identification and type of corner found: Evidence used to identify or procedure used to establish or reestablish the corner:
Found original Standard Street Mons, per 12 RM 73.

A description of the physical condition of the monument as found and as set or reset: Property Corner points found consisted of an Iron Pipe & Cap and a Nail & Tag set on top of a wooden fence, per CR 185-111-18, 10/23/2012. All Property Line points were set with Rebar & Cap. Property Corner points were set with a Drill Hole in AC Pavement and a Nail & Tag as shown hereon, per 12 RM 73.

SURVEYOR'S STATEMENT

This corner Record was prepared by me or under my direction in conformance with the Land Surveyor's Act on September 27, 2013

Signed [Signature] P.L.S. or R.C.E. No. 30465

COUNTY SURVEYOR'S STATEMENT

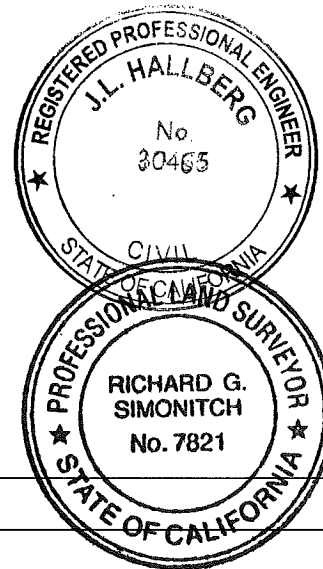
This Corner Record was received OCTOBER 2, 2013

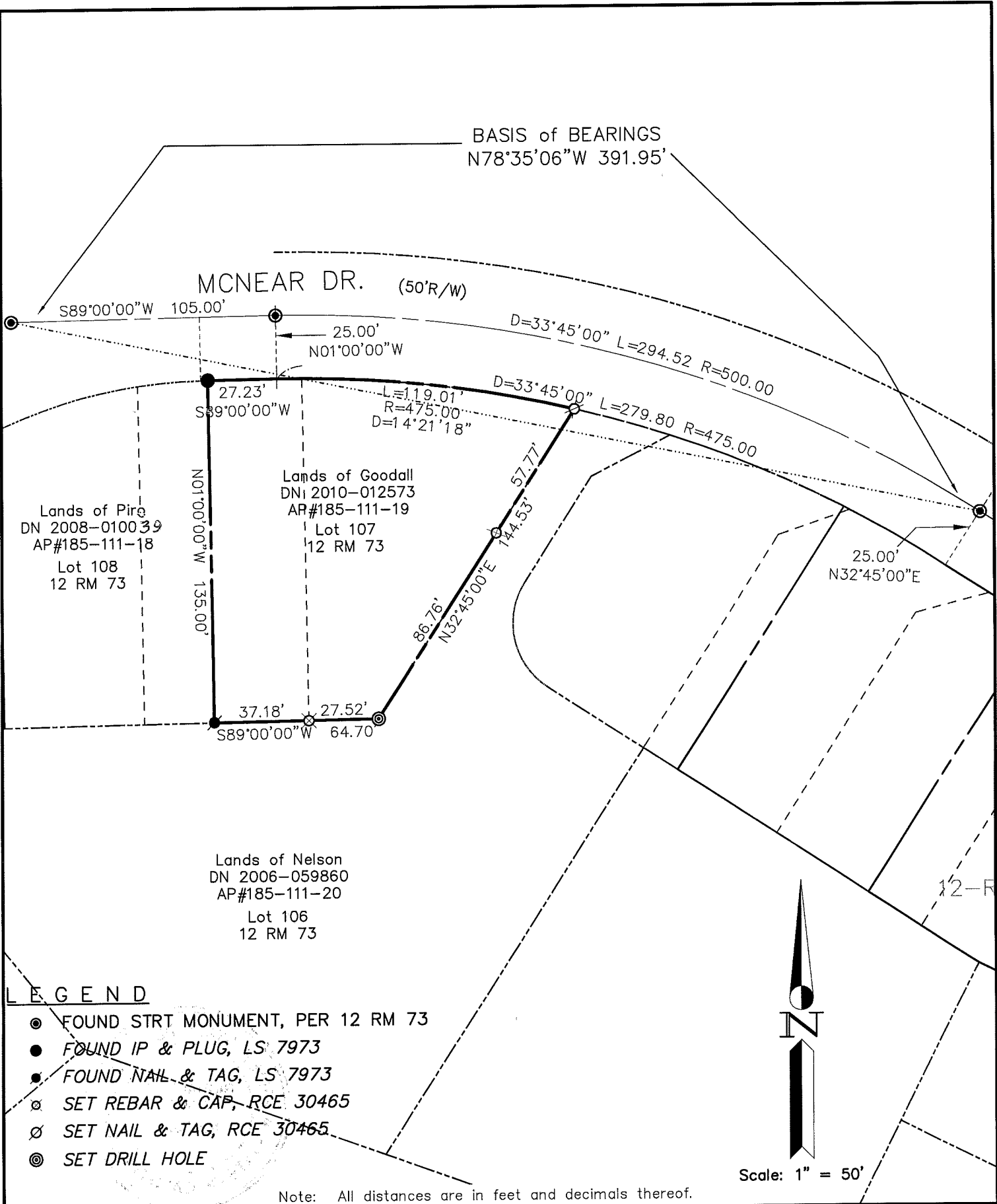
and examined and filed NOVEMBER 9th, 2013

Signed [Signature] P.L.S. or R.C.E. No. 7821

Title DEPUTY COUNTY SURVEYOR

County Surveyor's Comment _____





SHEET	1	OF	1
SCALE:	1" = 50'	DESIGN:	E.D.L.
DATE:	Sep 2013	DRAWN:	E.D.L.
FILE:	2013-084	CHECKED:	J.L.H.
2013-084\DWG\13-084-BASE,COR-REC			

J.L. ENGINEERING
 CIVIL ENGINEERS-LAND SURVEYORS
 1539 4th ST., SAN RAFAEL, CA. 94901 (415) 457-6647

Corner Record
 Lands of Goodall - 27 McNear Dr.
 APN 185-111-19, San Rafael, Marin County, CA