

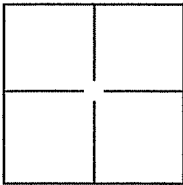
CORNER RECORD

Document Number APN 185-111-18

City of SAN RAFAEL

County of MARIN, California

Brief Legal Description LOT 108 - MAP OF RESUBDIVISION OF LOTS 20-55 AND LOTS 64-76, AS SHOWN ON MAP OF MARIN BAY, UNIT 2A - 12 MAPS 73



CORNER TYPE

Government Corner Control
 Meander Property
 Rancho Other

Date of Survey 10/23/12

COORDINATES(Optional)

N. _____
 E. _____
 Zone _____ NAD27 NAD83
 NAD83 Epoch _____
 Elev. _____
 Vert. Datum: NGVD29 NADV88
 Meas. Units: Metric Imperial

Corner - Left as found Found and tagged Established Reestablished Rebuilt

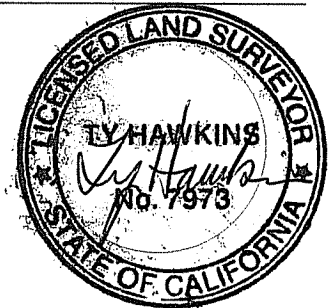
Identification and type of corner found: Evidence used to identify or procedure used to establish or reestablish the corner:
FOUND PINS IN CONCRETE MONUMENT WELLS, ACCEPTED AS MONUMENTS PER 12 MAPS 73. SEE REVERSE.

A description of the physical condition of the monument as found and as set or reset: _____
SET 3/4" X 24" IRON PIPE WITH PLASTIC CAP LS 7973 AT THE FRONT CORNERS OF LOT 108, 12 MAPS 73.
SET NAIL & BRASS TAG LS 7973 ON WOOD FENCE AT REAR CORNERS OF LOT 108, 12 MAPS 73.
SEE REVERSE

SURVEYOR'S STATEMENT

This Corner Record was prepared by me or under my direction in conformance with the Land Surveyor's Act on OCTOBER 23, 2012.

Signed [Signature] P.L.S. or R.C.E. No.: LS 7973



COUNTY SURVEYOR'S STATEMENT

This Corner Record was received OCTOBER 25, 2012 and examined and filed NOVEMBER 27, 2012.

Signed [Signature] P.L.S. or R.C.E. No.: 7128

Title COUNTY SURVEYOR

County Surveyor's Comment _____





MCNEAR DRIVE

BASIS OF BEARINGS

S89°00'00"W
105.00'

S01°00'00"E
25.00'

S89°00'00"W
27.23'

S89°00'00"W
2.77'

R=200.00'
L=80.05'
D=23°56'00"

N22°06'40"W (R)

R=100.00'
L=3.18'
D=1°49'20"

Note:
All dimensions on this plat are
as shown on R-1.

LOT 109
12 Maps 73

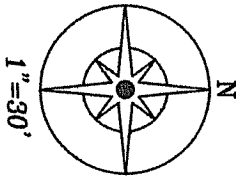
LOT 108
12 Maps 73

LOT 107
12 Maps 73

LEGEND

● Found Street Monument
Per R-1

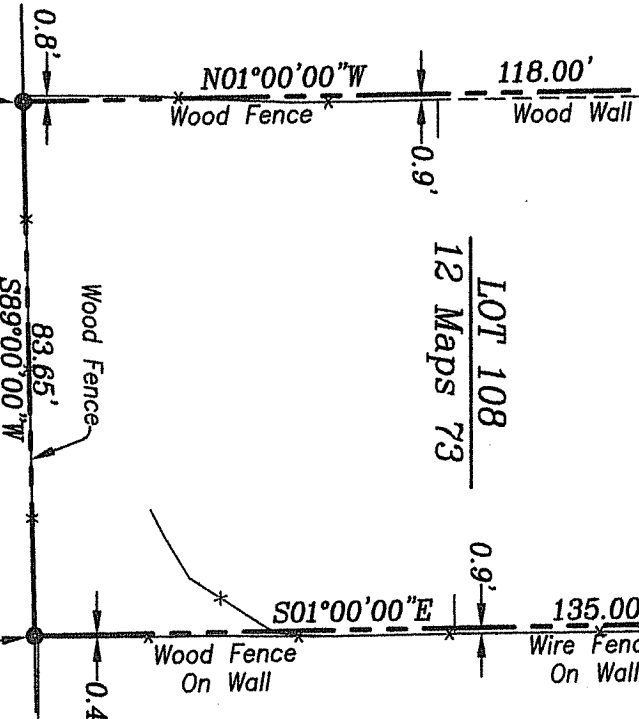
● Set 3/4" X 24" Iron
Pipe LS 7973 Unless Noted
R-1 12 Maps 73



Set Nail & Brass Tag
LS 7973 on Wood Fence

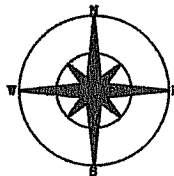
LOT 106
12 Maps 73

Set Nail & Brass Tag
LS 7973 on Wood Fence



**Corner Record Plat
Lot 108**

Map of Resubdivision of Lots 20-55 and
Lots 64-76, as Shown on Map of Marin
Bay, Unit 2A.
12 Maps 73
Marin County California



Ty Hawkins LS 7973
3636 Oak Canyon Ln.
Vacaville CA, 95688
Ph. 707-974-9890
Fx. 707-447-7171

Date: 10/23/12

Scale: 1"=30'

Job #: 12094

Sheet 2
of
2