

CORNER RECORD

Document Number 185-111-15

City of SAN RAFAEL

County of MARIN, California

Brief Legal Description LOT 111 PER 12 R.M. 73

CORNER TYPE

Government Corner Control

Meander Property

Rancho Other

Date of Survey 11/06/03

COORDINATES (Optional)

N. _____

E. _____

Zone _____ NAD27 NAD83

NAD83 Epoch _____

Elev. _____

Vert. Datum: NGVD29 NAVD88

Meas. Units: Metric Imperial

Corner- Left as found Found and tagged Established Reestablished Rebuilt

Identification and type of corner found: Evidence used to identify or procedure used to establish or reestablish the corner:
ESTABLISHED PROPERTY CORNERS FROM STREET MONUMENTS ON McNEAR DRIVE. (12 R.M. 73)

A description of the physical condition of the monument as found and as set or reset: SEE SHEET 2.

SURVEYOR'S STATEMENT

This Corner Record was prepared by me or under my direction in conformance with

the Land Surveyor's Act on NOVEMBER 6 2003

Signed _____ P.L.S. or R.C.E. No. P.L.S. 4694



COUNTY SURVEYOR'S STATEMENT

This Corner Record was received NOVEMBER 24, 2003

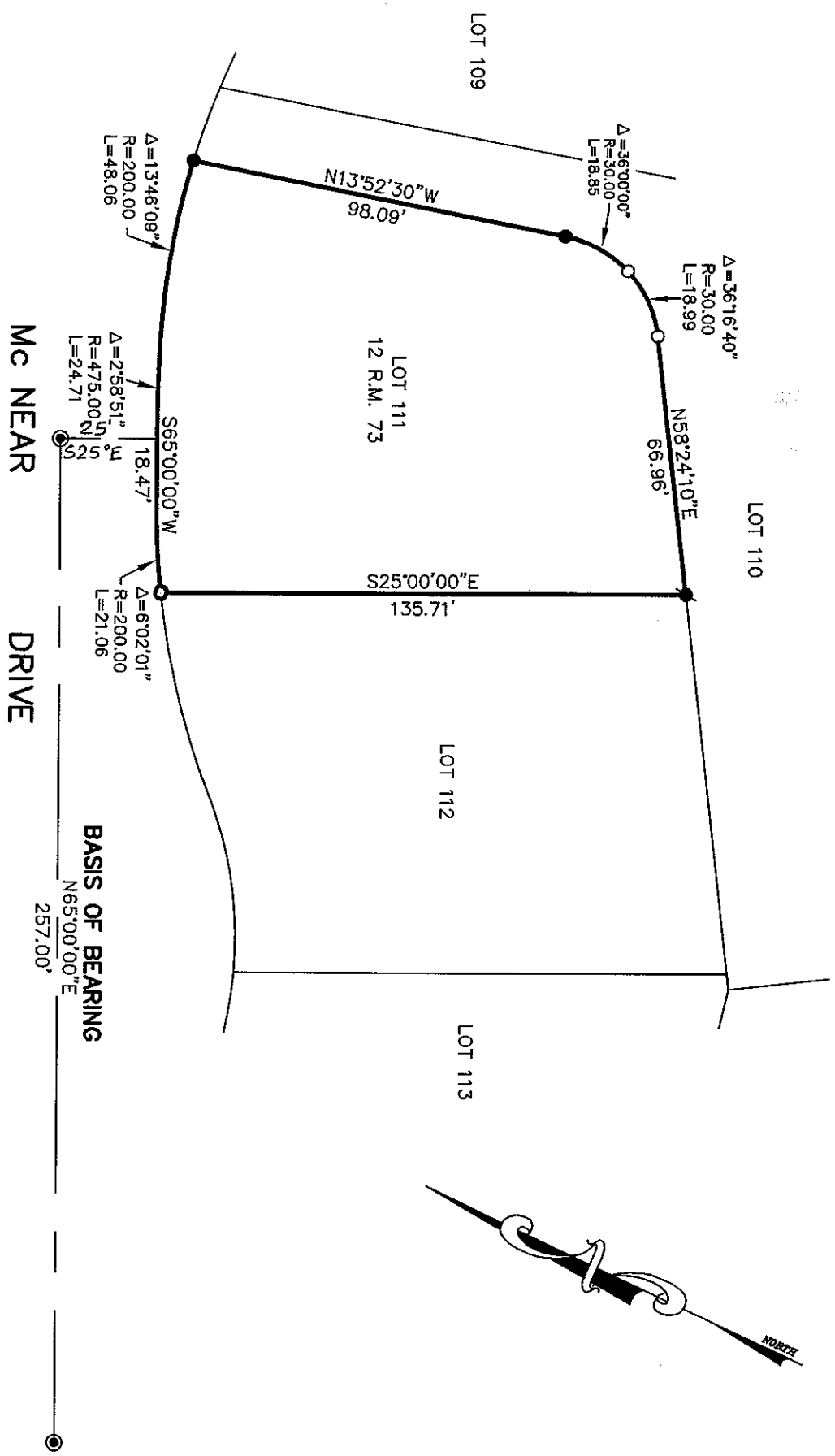
and examined and filed DECEMBER 9, 2003

Signed [Signature] P.L.S. or R.C.E. No. 7128

Title COUNTY SURVEYOR

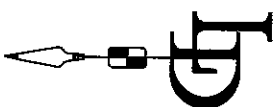
County Surveyor's Comment _____





LEGEND

- FOUND STREET MONUMENT
- FOUND 3/4" PIPE UNREADABLE
- FOUND REBAR NO CAP
- SET 3/4" PIPE AND PLUG L.S. 4694



CORNER RECORD	
LOT 111 12 R.M. 73	
MARIN COUNTY CALIFORNIA	
SAN RAFAEL	
SCALE: 1" = 40'	DRAWN BY:
DATE: 11/6/03	SHEET 1 OF 1
LAWRENCE P. DOYLE	
LAND SURVEYOR/CIVIL ENGINEER	
P.O. BOX 1609 MILL VALLEY CA 94942 (415-388-9585)	
DRAWING NO. 1211-03	