

# CORNER RECORD

Document Number A.P.# 185-111-12

City of SAN RAFAEL

County of MARIN, California

Brief Legal Description PARCEL 1 7 P.M. 103

### CORNER TYPE

Government Corner  Control   
Meander  Property   
Rancho  Other   
Date of Survey 8/28/02

### COORDINATES (Optional)

N. \_\_\_\_\_  
E. \_\_\_\_\_  
Zone \_\_\_\_\_ NAD27  NAD83   
NAD83 Epoch \_\_\_\_\_  
Elev. \_\_\_\_\_  
Vert. Datum: NGVD29  NAVD88   
Meas. Units: Metric  Imperial

Corner- Left as found  Found and tagged  Established  Reestablished  Rebuilt

Identification and type of corner found: Evidence used to identify or procedure used to establish or reestablish the corner:  
ESTABLISHED PROPERTY CORNERS FROM STREET MONUMENTS ON Mc NEAR DRIVE. (12 R.M. 73 & 7 P.M. 103)

A description of the physical condition of the monument as found and as set or reset: SEE SHEET 2.

### SURVEYOR'S STATEMENT

This Corner Record was prepared by me or under my direction in conformance with

the Land Surveyor's Act on SEPTEMBER 23 2002

Signed Lawrence P Doyle P.L.S. or R.C.E. No. P.L.S. 4694



### COUNTY SURVEYOR'S STATEMENT

This Corner Record was received OCTOBER 3, 2002

and examined and filed OCTOBER 8, 2002

Signed Coy P.L.S. or R.C.E. No. 7128

Title DEPUTY

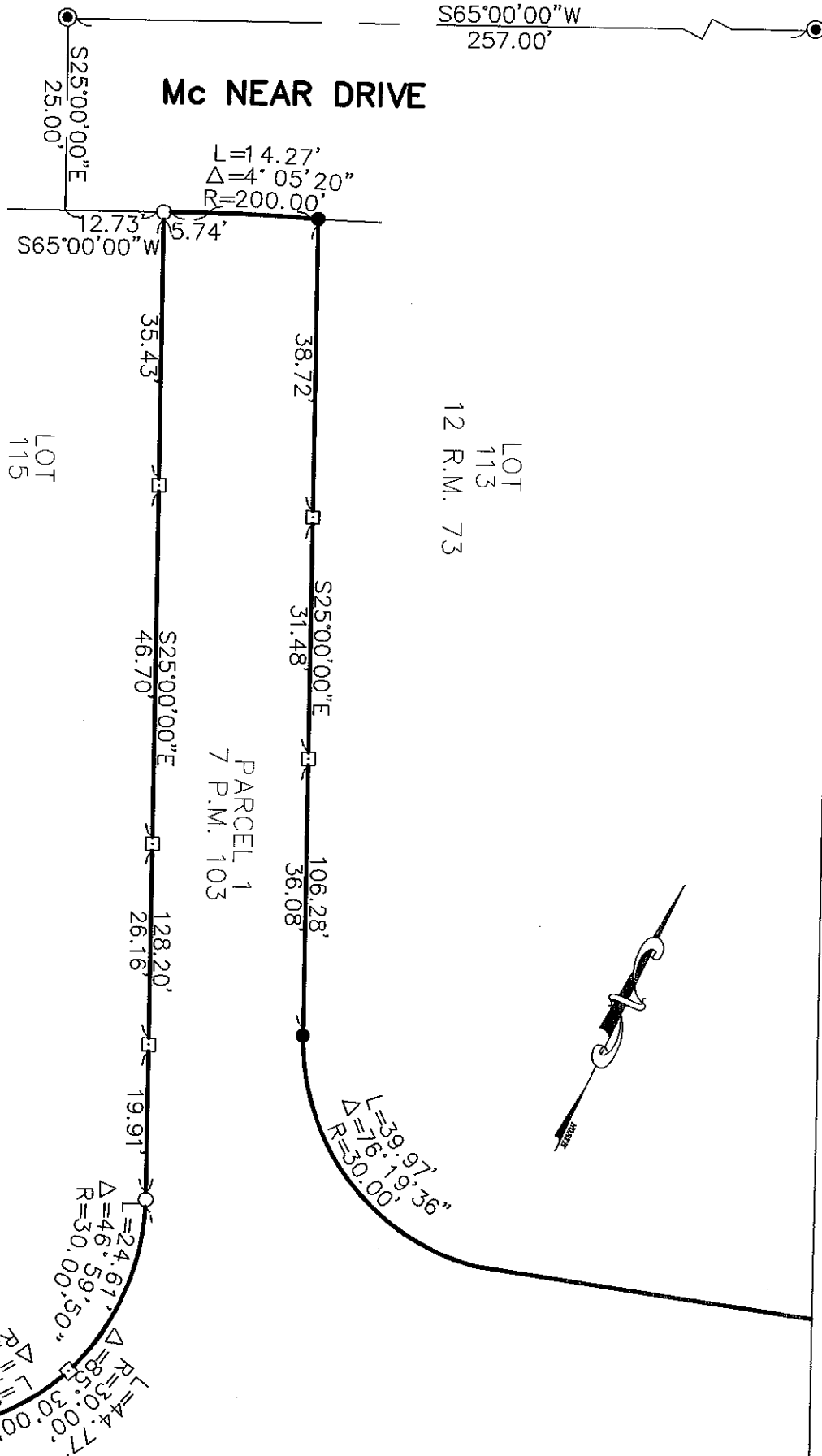
County Surveyor's Comment \_\_\_\_\_



BASIS OF BEARING

S65°00'00"W  
257.00'

### Mc NEAR DRIVE



LOT 113  
12 R.M. 73

PARCEL 1  
7 P.M. 103

LOT 115  
12 R.M. 73

### LEGEND

- FOUND STREET MONUMENT
- FOUND REBAR AND CAP L.S. 4694
- SET 3/4" PIPE AND PLUG L.S. 4694
- SET HUB AND TAG L.S. 4694



**CORNER RECORD**  
PARCEL 1 7 P.M. 103

SAN RAFAEL MARIN COUNTY CALIFORNIA

**LAWRENCE P. DOYLE**

LAND SURVEYOR/CIVIL ENGINEER  
P.O. BOX 1609 MILL VALLEY CA 94942 (415-388-9585)

SCALE: 1" = 20'  
DATE: 9/23/02

DRAWN BY: A/B  
SHEET 2 OF 2

DRAWING NO.

1085-02