



**JERRICO ASSOCIATES**  
 SUITE 27  
 77 MARK DRIVE  
 SAN RAFAEL, CA 94903

185-111-01

6601

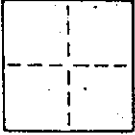
1/3

**CORNER RECORD**

COUNTY OF Marin T. \_\_\_\_\_ R. \_\_\_\_\_ MERIDIAN \_\_\_\_\_ CALIFORNIA

CORNER TYPE: GOV'T. CORNER  MEANDER  RANCHO  CONTROL  OTHER

CORNER IDENTIFICATION — DATE OF VISIT \_\_\_\_\_ 19\_\_



CORNER — LEFT AS FOUND  FOUND AND TAGGED  REESTABLISHED OBLITERATED CORNER  REBUILT

PHYSICAL DESCRIPTION OF CORNER FOUND; EVIDENCE AND METHOD USED TO IDENTIFY OR REESTABLISH

Standard City Monuments found as shown.

Lot 124 Re-sub of Marin Bay Unit 2-A ( 12 R.M. 73 ) San Rafael, Ca.

PHYSICAL DESCRIPTION OF MONUMENTS REBUILT OR PERPETUATED

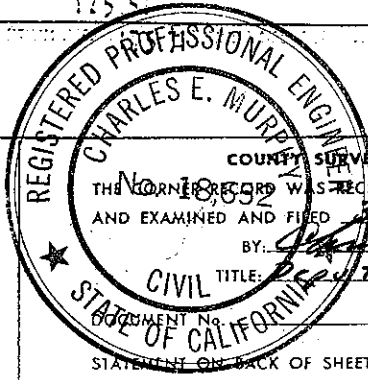
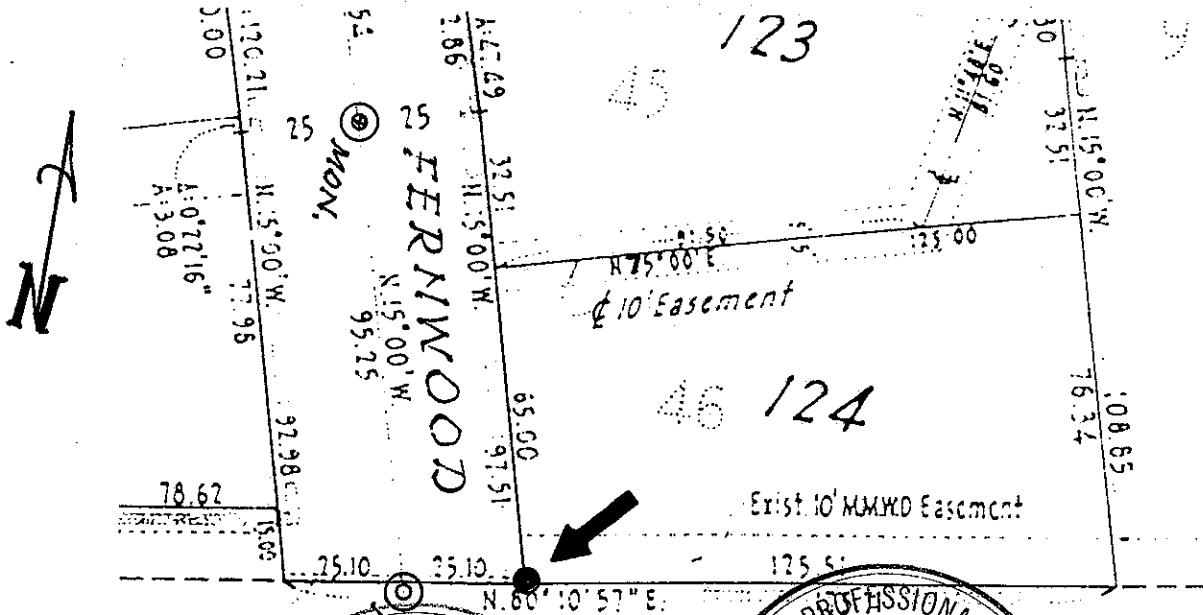
Set 3/4" iron pipe and tag L.S. 3887

CALIFORNIA COORDINATE SYSTEM ORDER: FIRST  SECOND  THIRD

STATIONS USED: NGS (USC & GS)  STATE  COUNTY  OTHER  STATION \_\_\_\_\_

ZONE \_\_\_\_\_ ELEVATION \_\_\_\_\_ NORTHINGS (Y) \_\_\_\_\_ EASTINGS (X) \_\_\_\_\_

SKETCH: (Include reference tie or witness points, remarks and topo of area)



**SURVEYOR'S CERTIFICATE**  
 THIS CORNER RECORD WAS PREPARED UNDER MY DIRECTION IN CONFORMANCE WITH THE LAND SURVEYORS ACT ON March 1986

SIGNED: [Signature]  
 L.S. or R.C.E. No.: 3887

**COUNTY SURVEYOR'S CERTIFICATE**  
 THE CORNER RECORD WAS RECEIVED 3-28- 1986 AND EXAMINED AND FILED 3-31 1986.  
 BY: [Signature]  
 CIVIL TITLE: Deputy County Surveyor  
 LIC EXP 6-30-89

STATEMENT ON BACK OF SHEET

YES  NO



**JERRICO ASSOCIATES**  
 SUITE 27  
 77 MARK DRIVE  
 SAN RAFAEL, CA 94903

185-111-01

6601

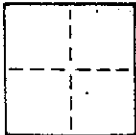
2/3

**CORNER RECORD**

COUNTY OF Marin T. \_\_\_\_\_ R. \_\_\_\_\_ MERIDIAN \_\_\_\_\_ CALIFORNIA

CORNER TYPE: GOV'T. CORNER  MEANDER  RANCHO  CONTROL  OTHER

CORNER IDENTIFICATION — DATE OF VISIT \_\_\_\_\_ 19\_\_\_\_



CORNER — LEFT AS FOUND  FOUND AND TAGGED  REESTABLISHED OBLITERATED CORNER  REBUILT

PHYSICAL DESCRIPTION OF CORNER FOUND; EVIDENCE AND METHOD USED TO IDENTIFY OR REESTABLISH

Standard City Monuments found as shown.

Lot 124 Re-sub of Marin Bay Unit 2-A ( 12-R.M. 73 ) San Rafael, Ca.

PHYSICAL DESCRIPTION OF MONUMENTS REBUILT OR PERPETUATED

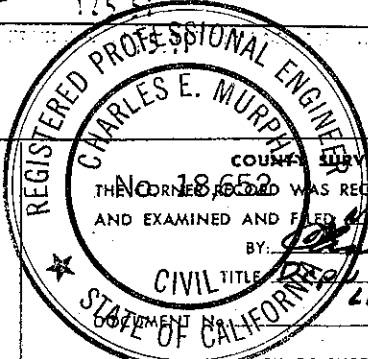
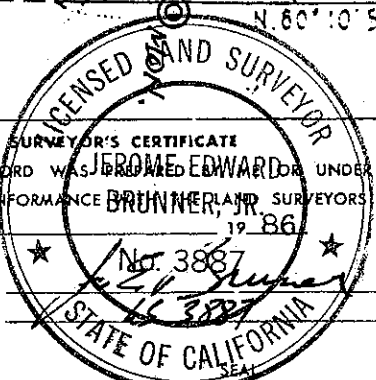
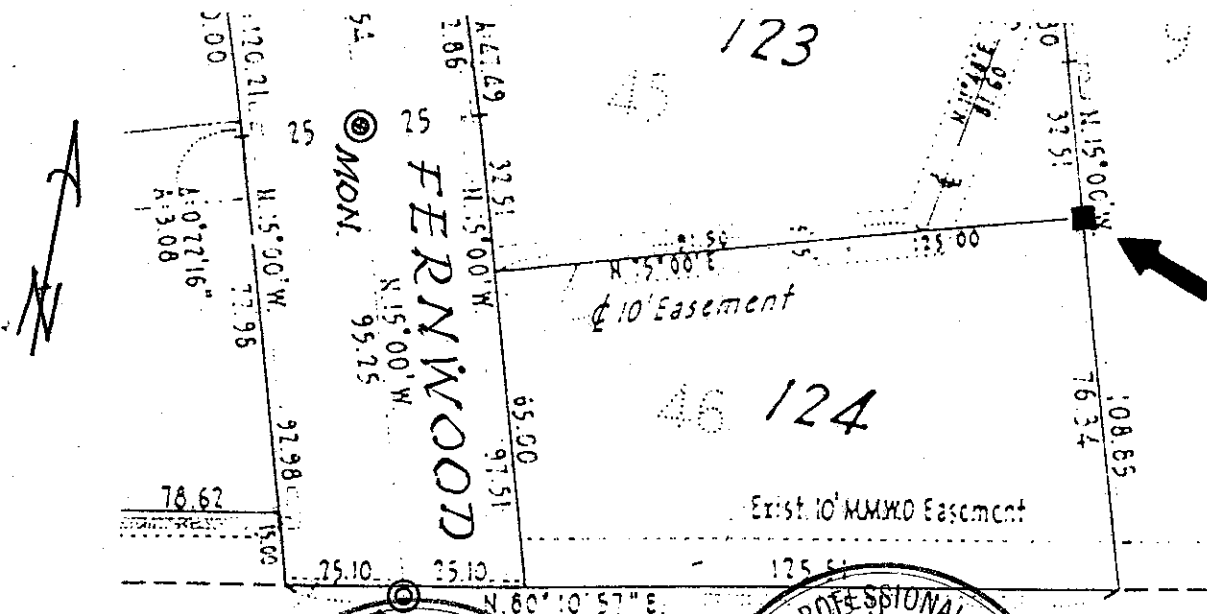
Set 2"x 2" redwood hub and tag L.S. 3887

CALIFORNIA COORDINATE SYSTEM ORDER: FIRST  SECOND  THIRD

STATIONS USED: NGS (USC & GS)  STATE  COUNTY  OTHER  STATION \_\_\_\_\_ STATION \_\_\_\_\_

ZONE \_\_\_\_\_ ELEVATION \_\_\_\_\_ NORTHINGS (Y) \_\_\_\_\_ EASTINGS (X) \_\_\_\_\_

SKETCH: (Include reference tie or witness points, remarks and topo of area)



SURVEYOR'S CERTIFICATE  
 THIS CORNER RECORD WAS PREPARED UNDER MY DIRECTION IN CONFORMANCE WITH THE SURVEYORS ACT ON March 1986

SIGNED: \_\_\_\_\_  
 L.S. or R.C.E. No. \_\_\_\_\_

COUNTY SURVEYOR'S CERTIFICATE  
 THE CORNER RECORD WAS RECEIVED March 28 1986  
 AND EXAMINED AND FILED March 31 1986  
 BY: Charles E. Murphy  
 CIVIL TITLE County Surveyor  
 Lic. Exp. 6-30-89

STATEMENT ON BACK OF SHEET

YES  NO

