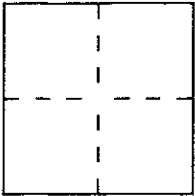


CORNER RECORD

Document Number _____

City of SAN RAFAEL County of MARIN, California

Brief Legal Description LOT 89 ~ 11 RM 24 ~ AP # 185-101-21
16 FLAMINGO LANE



CORNER TYPE

Government Corner Control
Meander Property
Rancho Other
Date of Survey _____

COORDINATES
(Optional)

N. _____
E. _____
Zone _____ Datum _____
Elev. _____

Corner — Left as found Found and tagged Established Reestablished Rebuilt

Identification and type of corner found: Evidence used to identify or procedure used to establish or reestablish the corner:
FOUND STANDARD WELL MONUMENTS WITH BRASS PINS AS SHOWN
ON 11 RM 24, FIELD TIES DEVELOPED HOLDING FLAMINGO LANE
WELL MONUMENTS.

A description of the physical condition of the monument as found and as set or reset:
SET 3/4" IRON PIPES TAGGED P.L.S. 5296

SURVEYOR'S STATEMENT

This Corner Record was prepared by me or under my direction in conformance with
the Land Surveyors' Act of MAY 1993.

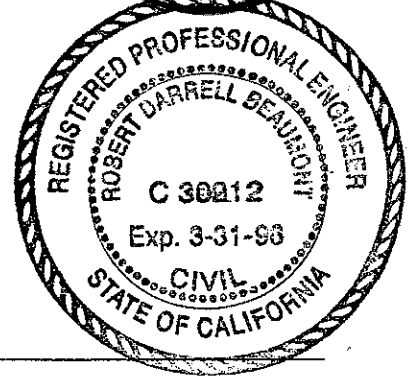
Signed Steven H. Jacobs L.S. or R.C.E. Number P.L.S. 5296

COUNTY SURVEYOR'S STATEMENT

This Corner Record was received 5-25 1993 and examined
and filed 5-25 1993.

Signed RDR Title DCS

County Surveyor's Comment _____





1" = 100'

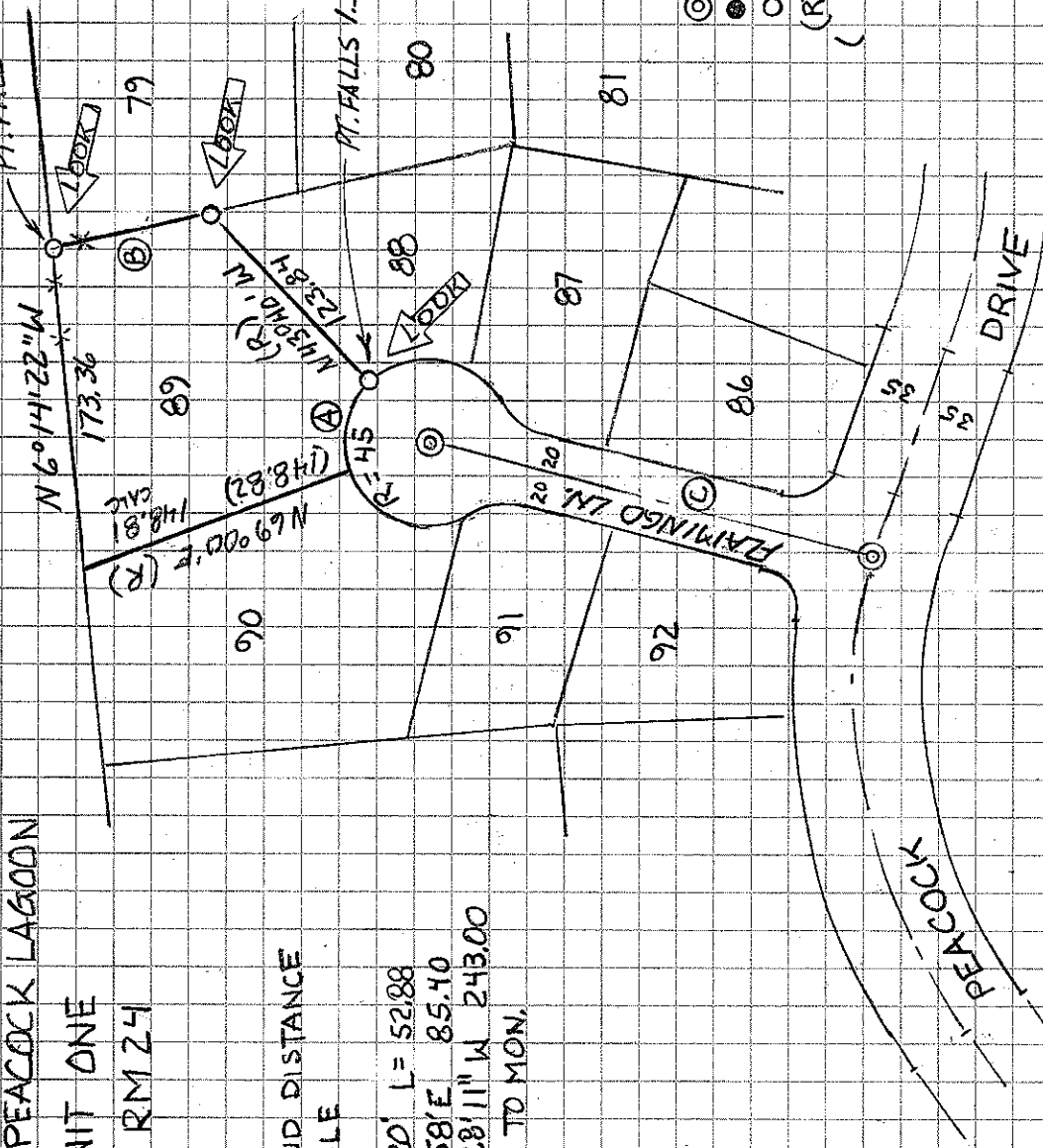
MAP OF PEACOCK LAGOON
UNIT ONE
11 RM 24

PT. FALL 0.5' OUTSIDE FENCE CORNER

LOT 89

AP# 185-101-21
LANDS OF LIN
3359 OR 21

PT. FALLS 1.3' BEHIND BACK OF SIDEWALK



COURSE AND DISTANCE
TABLE

- (A) A = 67° 20' L = 52.88
- (B) N 76° 58' E 85.10
- (C) N 76° 28' 11\"/>

MON. TO MON.

LEGEND

- ⊙ FOUND STD. WELL MONUMENT
- FOUND 3/4" I.P. L.S. 3775
- SET 3/4" I.P. P.L.S. 5296
- (R) RADIAL BEARING
- () MAP DATA