

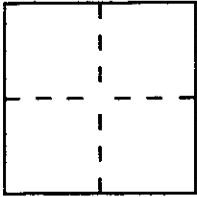
# CORNER RECORD

Document Number AP # 185-094-09

City of San Rafael

County of Marin, California

Brief Legal Description Lot 22, Map of Seaview Heights No.1, 12 Maps 86



### CORNER TYPE

Government Corner  Control   
 Meander  Property   
 Rancho  Other   
 Date of Survey \_\_\_\_\_

### COORDINATES (Optional)

N. \_\_\_\_\_  
 E. \_\_\_\_\_  
 Zone \_\_\_\_\_ Datum \_\_\_\_\_  
 Elev. \_\_\_\_\_

Corner — Left as found  Found and tagged  Established  Reestablished  Rebuilt

Identification and type of corner found: Evidence used to identify or procedure used to establish or reestablish the corner:

Monumented rear property corners of Lot 22 per record dimensions found on 12 RM 86, Marin County Records. Found street monuments were used as control. (See Sketch on Page 2)

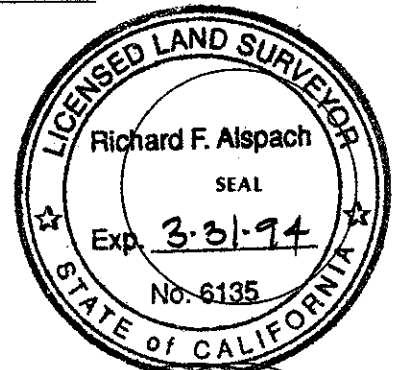
A description of the physical condition of the monument as found and as set or reset:

Set 3/4" iron pipe w/plastic cap "LS 6135"

### SURVEYOR'S STATEMENT

This Corner Record was prepared by me or under my direction in conformance with the Land Surveyors' Act on August 22 19 94.

Signed Richard F. Alsopach L.S. or R.C.E. Number LS 6135



### COUNTY SURVEYOR'S STATEMENT

This Corner Record was received 8-23 19 94 and examined

and filed 8-23 19 94.

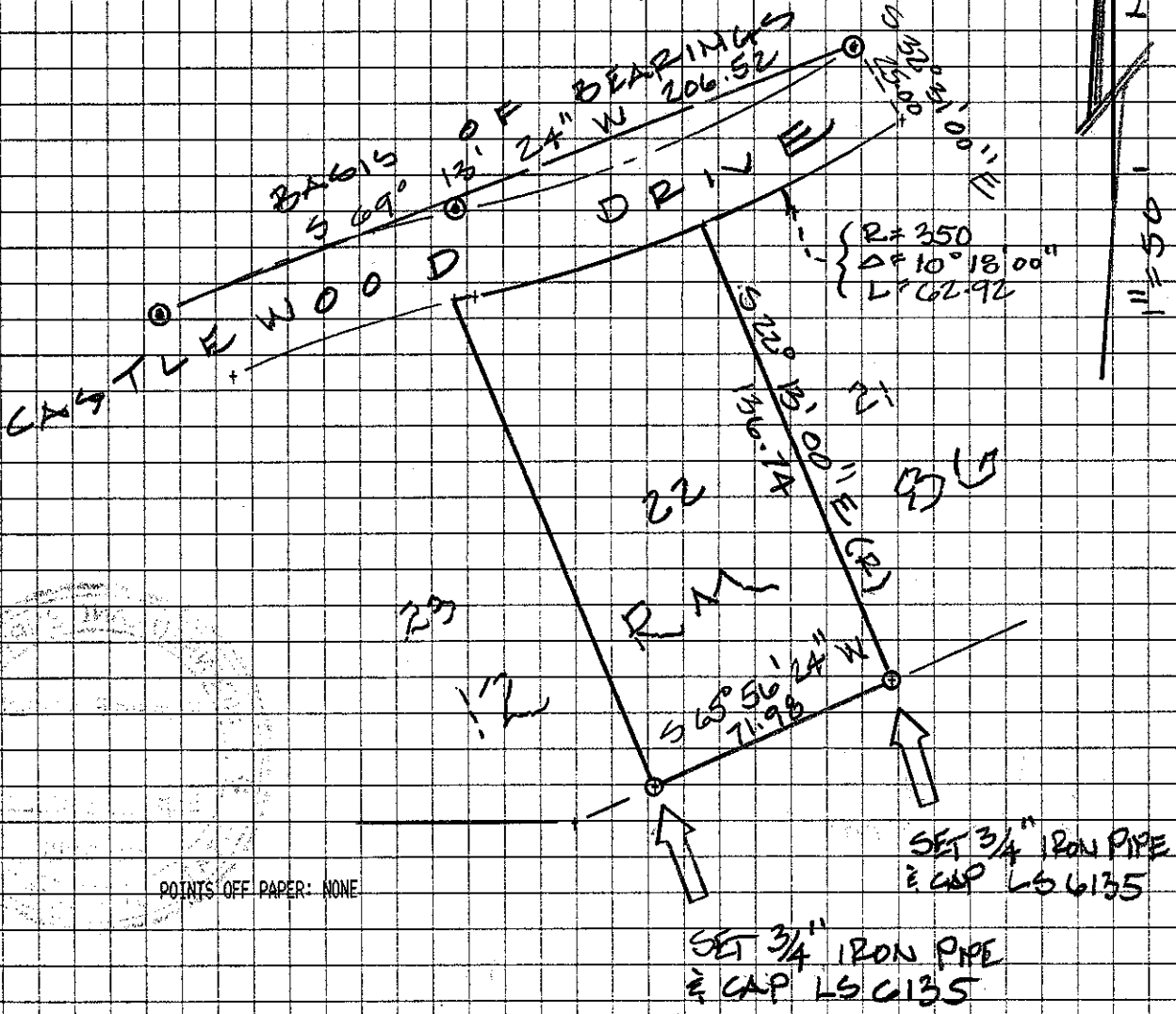
Signed Richard F. Alsopach Title DCS

County Surveyor's Comment \_\_\_\_\_



CO-PLOT output, date: 08-22-1994, time: 12:52:31 PM, FILE: CARIS215.GCC

PLOT SCALE: 1 inch = 50 feet  
NORTH IS ROTATED 0.0000 DEGREES CLOCKWISE.



NOTE: GET REAR CORNERS OF LOT 22 PER RECORD DIMENSIONS AS SHOWN ON 12 RM 86

LEGEND

⊙ FOUND STREET MONUMENT, BRASS PIN IN CONCRETE