

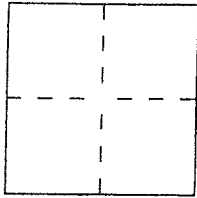
CORNER RECORD

Document Number 185-093-09

City of San Rafael

County of Marin, California

Brief Legal Description Marin Assessors Parcel 185-093-10
Lot 10 per 12 RM 86



CORNER TYPE

- Government Corner
- Meander
- Rancho
- Date of Survey _____
- Control
- Property
- Other

COORDINATES (Optional)

N. _____
 E. _____
 Zone _____ Datum _____
 Elev. _____

Corner — Left as found Found and tagged Established Reestablished Rebuilt

Identification and type of corner found: Evidence used to identify or procedure used to establish or reestablish the corner:

Found Standard Street monuments per 12 RM 86

A description of the physical condition of the monument as found and as set or reset: _____

Set 1/2 Iron bars and caps LS 5290 at corners
as shown on "Sketch Map" cover

SURVEYOR'S STATEMENT

This Corner Record was prepared by me or under my direction in conformance with

the Land Surveyors' Act on March 14 2014

Signed David Harp L.S. or R.C.E. Number LS 5290



COUNTY SURVEYOR'S STATEMENT

This Corner Record was received MAR. 24, 2014 and examined

and filed APRIL 1, 2014

Signed Richard G. Simonitch Title DEPUTY



County Surveyor's Comment _____

NE, 1964

SCALE 1" = 100'

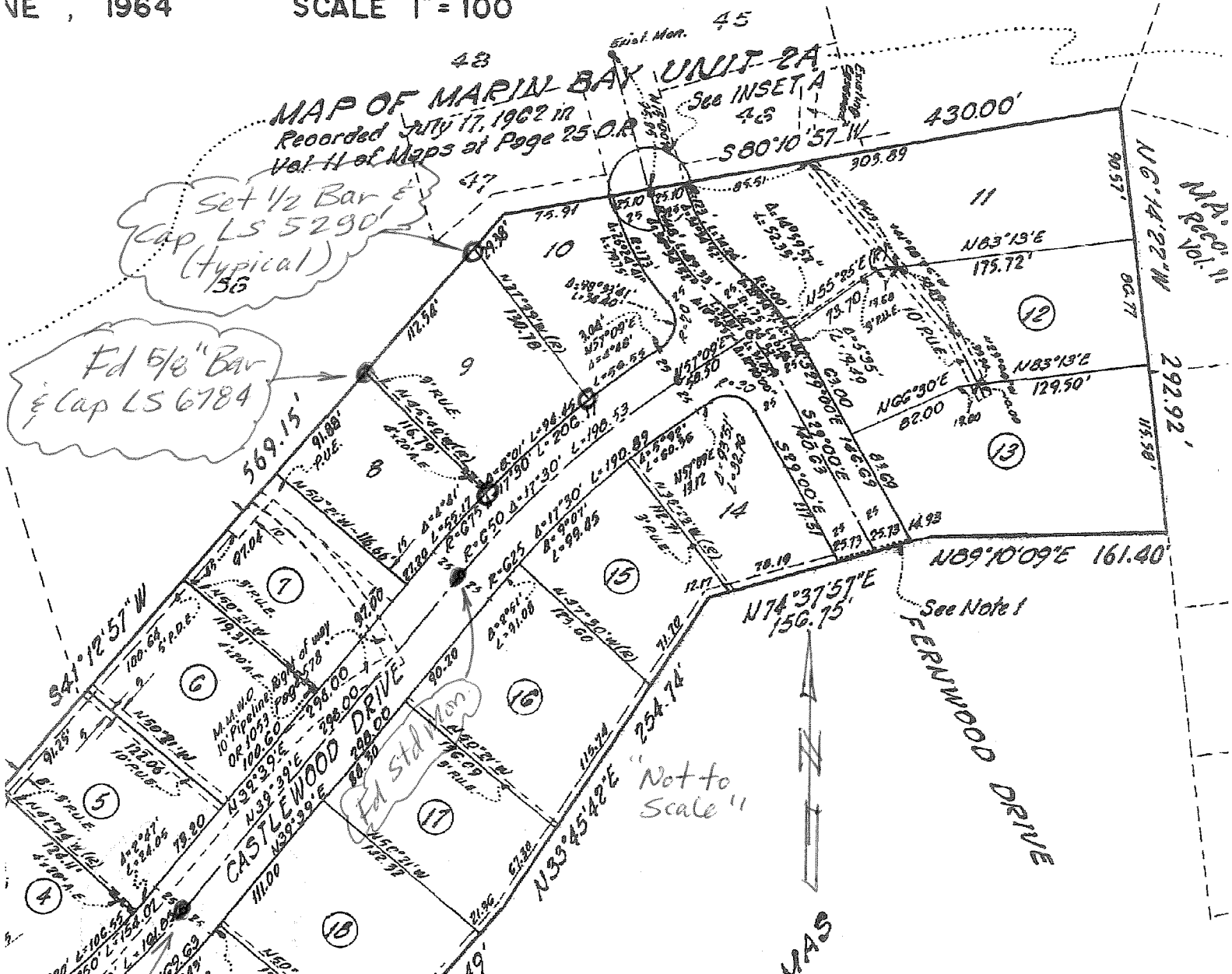
MAP OF MARIN BAY UNIT 2A

Recorded July 17, 1962 in
Vol. H of Maps at Page 25 O.R.

See INSET A

Set 1/2 Bar &
Cap LS 5290'
(typical)
56

Fd 5/8" Bar
& Cap LS 6784



Fd Std Monument

"Map of Seaview Heights"
12 RM EG

SKETCH MAP

M.P. Record 11

292.92'

N 6° 14' 22" W

90.57'

115.58'

161.40'

11

12

13

15

16

17

18

6

5

4

3

2

1

10

9

8

7

10

11

12

13

14

15

16

17

18

19

20

21

22

23

24

25

26

27

28

29

30

31

32

33

34

35

36

37

38

39

40

41

42

43

44

45

46

47

48

49

50

51

52

53

54

55

56

57

58

59

60

61

62

63

64

65

66

67

68

69

70

71

72

73

74

75

76

77

78

79

80

81

82

83

84

85

86

87

88

89

90

91

92

93

94

95

96

97

98

99

100

101

102

103

104

105

106

107

108

109

110

111

112

113

114

115

116

117

118

119

120

121

122

123

124

125

126

127

128

129

130

131

132

133

134

135

136

137

138

139

140

141

142

143

144

145

146

147

148

149

150

151

152

153

154

155

156