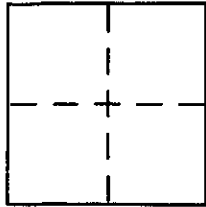


CORNER RECORD

Document Number APN: 185-093-09
County of Marin, California

City of San Rafael

Brief Legal Description Lot B 12 RM 86



CORNER TYPE

Government Corner Control
Meander Property
Rancho Other
Date of Survey 15 March 2004

COORDINATES (Optional)

N. _____
E. _____
Zone _____ NAD27 NAD83
NAD83 Epoch _____
Elev. _____
Vert. Datum: NGVD29 NAVD88
Meas. Units: Metric Imperial

Corner - Left as found Found and tagged Established Reestablished Rebuilt

Identification and type of corner found: Evidence used to identify or procedure used to establish or reestablish the corner:

See Page 2 of 2

A description of the physical condition of the monument as found and as set or reset:

See Page 2 of 2

SURVEYOR'S STATEMENT

This Corner Record was prepared by me or under my direction in conformance with the Land Surveyor's Act on APRIL 20 2004

Signed [Signature] P.L.S or R.C.E. No. 6784

COUNTY SURVEYOR'S STATEMENT

This Corner Record was received APRIL 20, 2004

and examined and filed APRIL 20, 2004

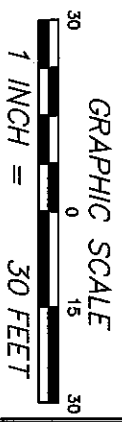
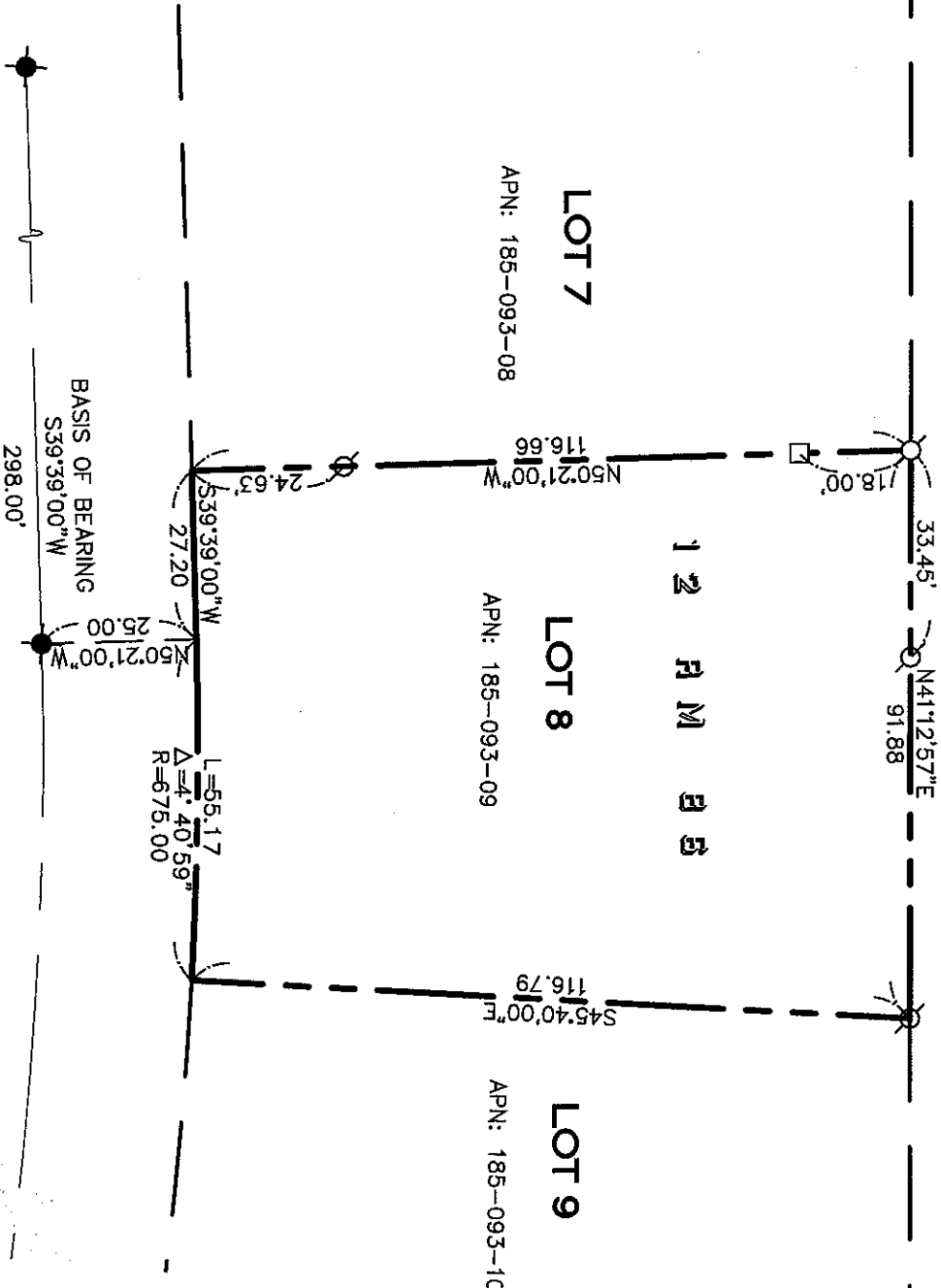
Signed [Signature] P.L.S or R.C.E. No. 7128

Title COUNTY SURVEYOR

County Surveyor's Comment _____



CASTLEWOOD DRIVE (50' WIDE)



REFERENCE

"MAP OF SEAVIEW HEIGHTS NO 1, SAN RAFAEL, CALIFORNIA" FILED FOR RECORD JULY 23, 1964 IN VOLUME 12 OF MAPS, AT PAGE 86, MARIN COUNTY RECORDS.

LEGEND

- ✕ FOUND CITY MONUMENT
 - SET 5/8" REBAR WITH CAP, PLS 6784
 - SET 2x2 HUB & TACK WITH BRASS TAG, PLS 6784
- NOTE
RECORD=MEASURED

CORNER RECORD

MERIDIAN SURVEYING ENGINEERING, INC.
 1812 UNION STREET
 SAN FRANCISCO, CA 94123
 (415) 440-4131
 info@meridiansurvey.com
 04020
 777 GRAND AVENUE, SUITE 202
 SAN RAFAEL, CA 94901
 (415) 456-6450