

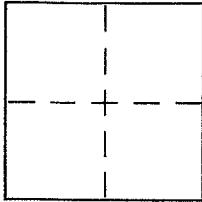
CORNER RECORD

Document Number 185-063-01

City of SAN RAFAEL

County of MARIN, California

Brief Legal Description LOT 52 MAP OF PEACOCK LAGOON, #1, (11 RM 24)



CORNER TYPE

Government Corner Control
Meander Property
Rancho Other
Date of Survey 8/23/2004

COORDINATES (Optional)

N. _____
E. _____
Zone _____ NAD27 NAD83
NAD83 Epoch _____
Elev. _____
Vert. Datum: NGVD29 NAVD88
Meas. Units: Metric Imperial

Corner - Left as found Found and tagged Established Reestablished Rebuilt

Identification and type of corner found: Evidence used to identify or procedure used to establish or reestablish the corner:

Reestablish the EASTERLY LINE & A PORTION OF THE SOUTHERLY LINE of LOT 52, MAP OF PEACOCK LAGOON, Unit 1, 11 RM 24. CORNERS SET FROM EXISTING STREET MONUMENTS OF RECORD ON LAGOON ROAD. SEE SKETCH ON REVERSE SIDE FOR DETAILS

A description of the physical condition of the monument as found and as set or reset:

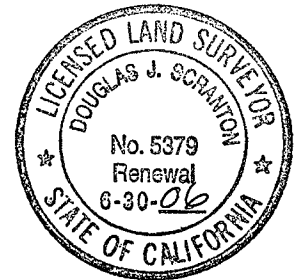
set 1/2" rebar with PLS CAP 5379 AFFIXED TO TOP & DRIVEN FLUSH WITH SURROUNDING GRADE

SURVEYOR'S STATEMENT

This Corner Record was prepared by me or under my direction in conformance with

the Land Surveyor's Act on Sept. 29 2004

Signed Douglas J. Scranton P.L.S or R.C.E. No. PLS 5379



COUNTY SURVEYOR'S STATEMENT

This Corner Record was received OCTOBER 1, 2004

and examined and filed OCTOBER 26, 2004

Signed [Signature] P.L.S or R.C.E. No. 7128

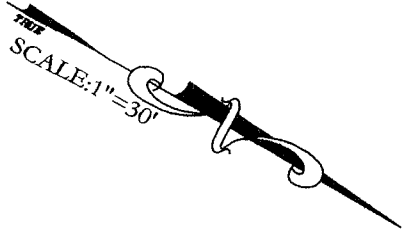
Title COUNTY SURVEYOR



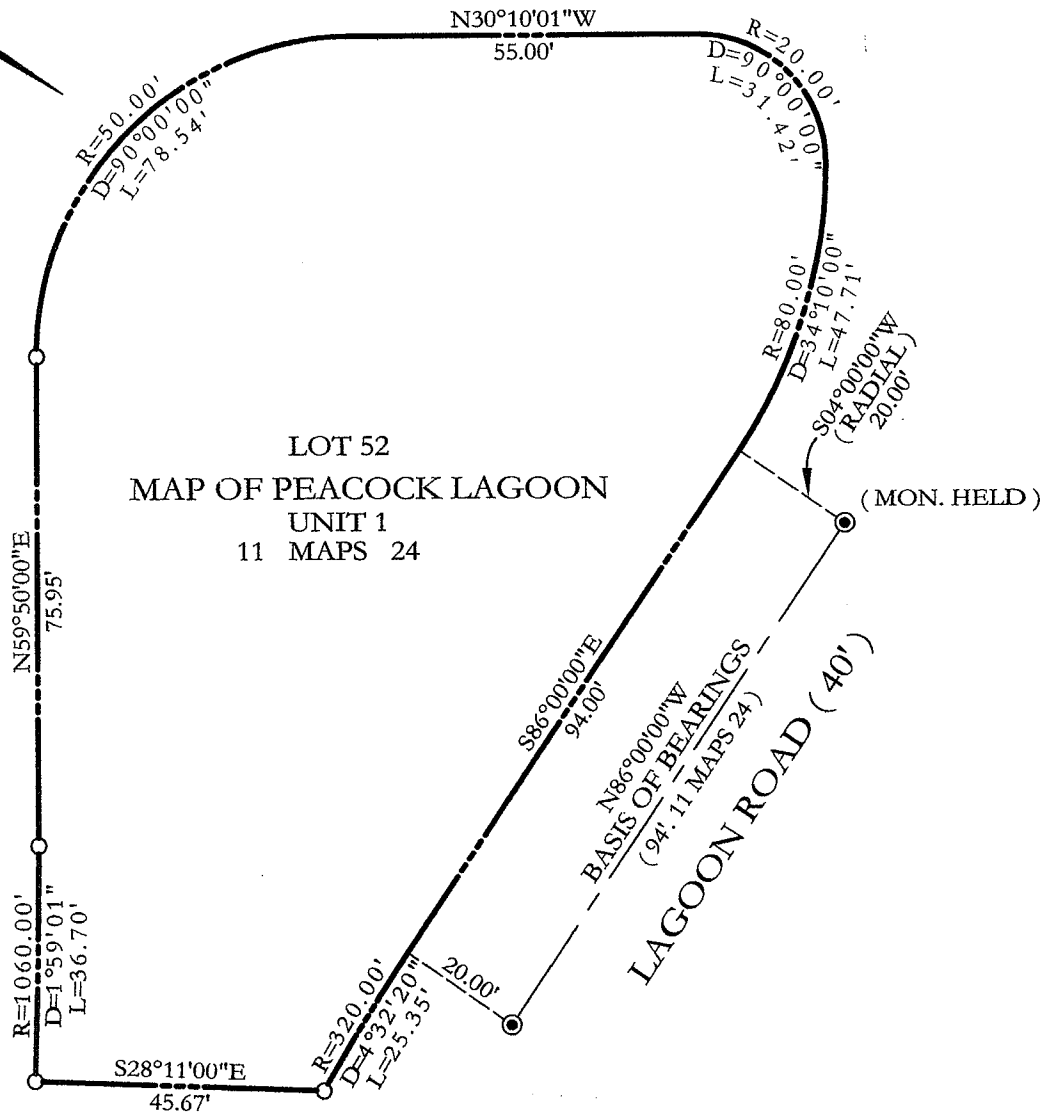
County Surveyor's Comment _____

PREPARED BY DJ SCRANTON SURVEYING NOV 20, 04

PEACOCK DRIVE (70')



SAN PEDRO ROAD
(WIDTH VARIES)



ALL DISTANCES GIVEN IN FEET
AND DECIMALS THEREOF

NO EASEMENTS ARE DEPICTED
MISCELLANEOUS LINE POINTS
NOT SHOWN.

LEGEND

○ SET 1/2" REBAR/PLS 5379

BASIS OF BEARINGS

TAKEN AS N86°00'00"W BETWEEN MONUMENTS
ON LAGOON ROAD AS SHOWN.