

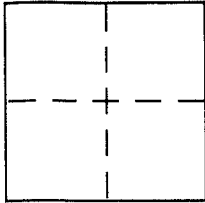
CORNER RECORD

Document Number A.P.N. 185-061-16

City of SAN RAFAEL

County of MARIN, California

Brief Legal Description LOT 3 PER 11 R.M. 36



CORNER TYPE

Government Corner Control
Meander Property
Rancho Other
Date of Survey 8-9-04

COORDINATES (Optional)

N. _____
E. _____
Zone _____ NAD27 NAD83
NAD83 Epoch _____
Elev. _____
Vert. Datum: NGVD29 NAVD88
Meas. Units: Metric Imperial

Corner - Left as found Found and tagged Established Reestablished Rebuilt

Identification and type of corner found: Evidence used to identify or procedure used to establish or reestablish the corner:

= SEE OVER =

A description of the physical condition of the monument as found and as set or reset: _____

= SEE OVER =

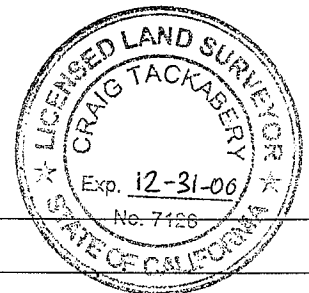
SURVEYOR'S STATEMENT

This Corner Record was prepared by me or under my direction in conformance with the Land Surveyor's Act on OCT. 29 2004
Signed David Contreras P.L.S. or R.C.E. No. 5065

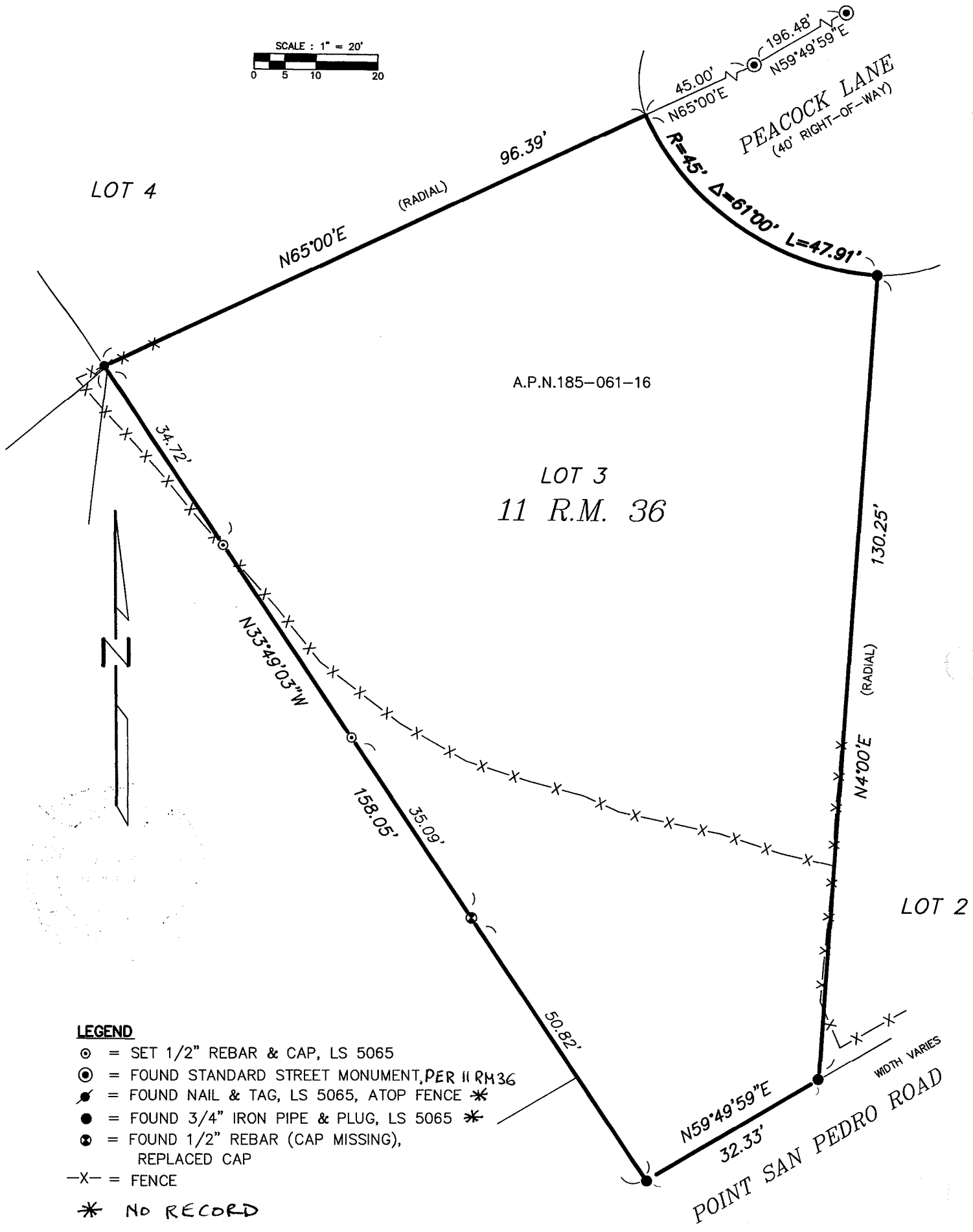
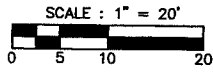


COUNTY SURVEYOR'S STATEMENT

This Corner Record was received DECEMBER 6, 2004
and examined and filed JANUARY 11, 2005
Signed _____ P.L.S. or R.C.E. No. 7128
Title COUNTY SURVEYOR



County Surveyor's Comment _____



LEGEND

- ⊙ = SET 1/2" REBAR & CAP, LS 5065
- ⊙ = FOUND STANDARD STREET MONUMENT, PER 11 RM 36
- = FOUND NAIL & TAG, LS 5065, ATOP FENCE *
- = FOUND 3/4" IRON PIPE & PLUG, LS 5065 *
- ⊙ = FOUND 1/2" REBAR (CAP MISSING), REPLACED CAP
- X- = FENCE
- * = NO RECORD