

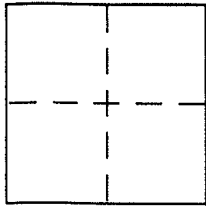
CORNER RECORD

Document Number A.P.N. 184-230-15

City of SAN RAFAEL

County of MARIN, California

Brief Legal Description LOT 27 PER 19 R.M. 87



CORNER TYPE

Government Corner Control
Meander Property
Rancho Other
Date of Survey 9-23-04

COORDINATES (Optional)

N. _____
E. _____
Zone _____ NAD27 NAD83
NAD83 Epoch _____
Elev. _____
Vert. Datum: NGVD29 NAVD88
Meas. Units: Metric Imperial

Corner - Left as found Found and tagged Established Reestablished Rebuilt

Identification and type of corner found: Evidence used to identify or procedure used to establish or reestablish the corner:

= SEE OVER =

A description of the physical condition of the monument as found and as set or reset:

= SEE OVER =

SURVEYOR'S STATEMENT

This Corner Record was prepared by me or under my direction in conformance with the Land Surveyor's Act on NOVEMBER 2 2004

Signed David Contreras P.L.S or R.C.E. No. LS 5065



COUNTY SURVEYOR'S STATEMENT

This Corner Record was received DECEMBER 6, 2004

and examined and filed JANUARY 11, 2005

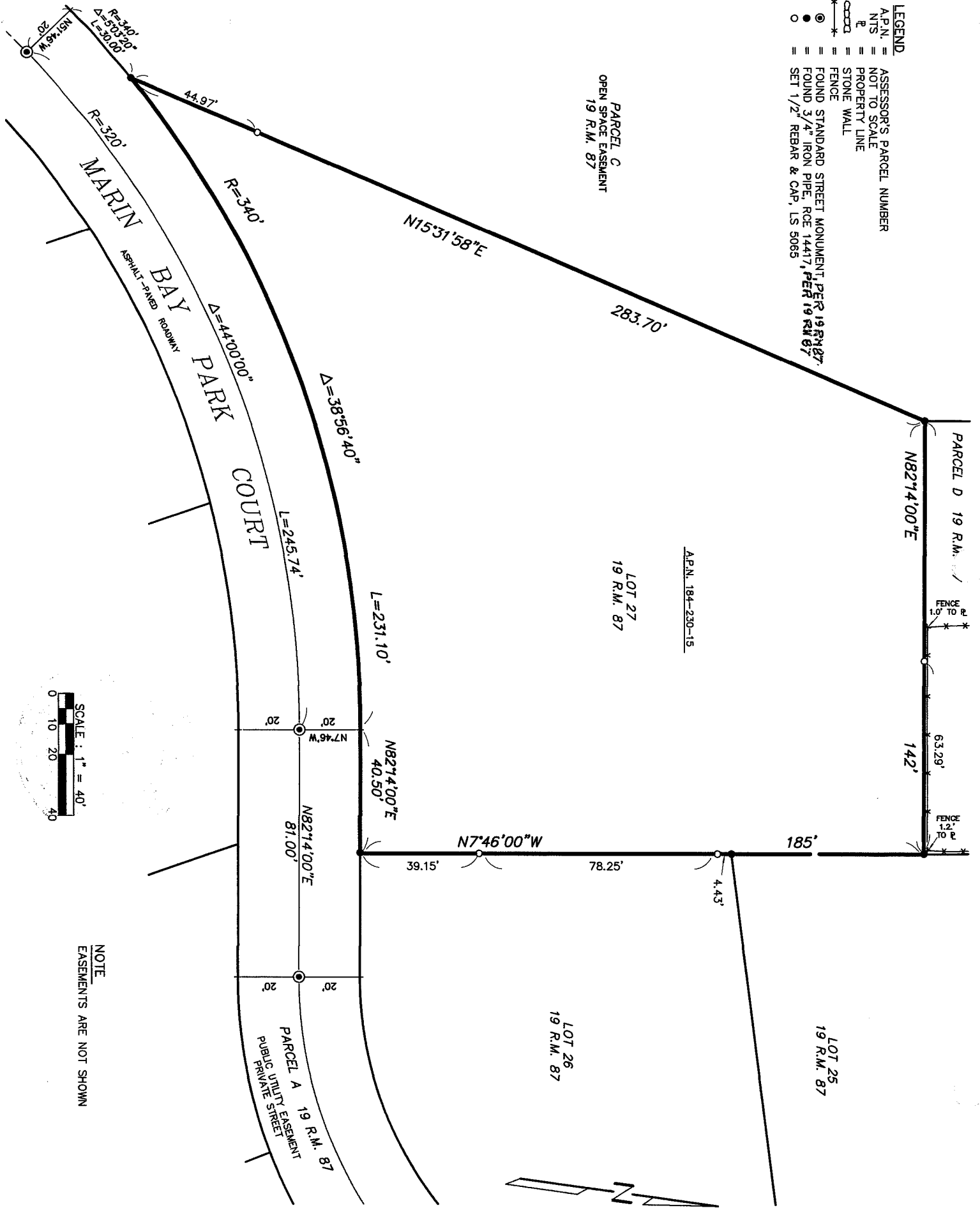
Signed [Signature] P.L.S or R.C.E. No. 7128

Title COUNTY SURVEYOR



County Surveyor's Comment _____

LEGEND
 A.P.N. = ASSESSOR'S PARCEL NUMBER
 N.T.S. = NOT TO SCALE
 R = PROPERTY LINE
 --- = STONE WALL
 --- = FENCE
 --- = FOUND STANDARD STREET MONUMENT PER 19 R.M. 87
 --- = FOUND 3/4" IRON PIPE, ROE 14417, PER 19 R.M. 87
 ○ = SET 1/2" REBAR & CAP, LS 5085



NOTE
 EASEMENTS ARE NOT SHOWN

