

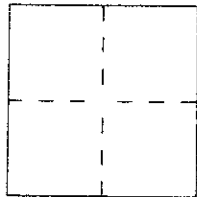
CORNER RECORD

Document Number 184.230-11

City of SAN RAFAEL

County of MARIN, California

Brief Legal Description LOT 11 MAP OF MARIN BAY PARK (19 RM 87)



CORNER TYPE

Government Corner Control
Meander Property
Rancho Other
Date of Survey 9/13/2000

COORDINATES (Optional)

N. _____
E. _____
Zone _____ Datum _____
Elev. _____

Corner — Left as found Found and tagged Established Reestablished Rebuilt

Identification and type of corner found: Evidence used to identify or procedure used to establish or reestablish the corner:

REESTABLISH THE CORNER COMMON TO LOT 11 & LOT 10 @ the STREET RIGHT OF WAY (MARIN BAY PARK COURT). REESTABLISH FROM EXISTING STREET MONUMENTS IN MARIN BAY PARK COURT PER THE MAP OF MARIN BAY PARK 19 RM 87 ~ SEE SKETCH ON PAGE 2

A description of the physical condition of the monument as found and as set or reset:

set 1/2" rebar with PLASTIC CAP AFFIXED TO TOP of Rebar & DRIVEN flush with SURROUNDING GRADE. PLASTIC CAP embossed " PLS 5379, SCRANTON".

SURVEYOR'S STATEMENT

This Corner Record was prepared by me or under my direction in conformance with

the Land Surveyors Act of October 10 2000

Signed Douglas J. Scranton L.S. or R.C.E. Number PLS 5379

Renewal 6-30-04

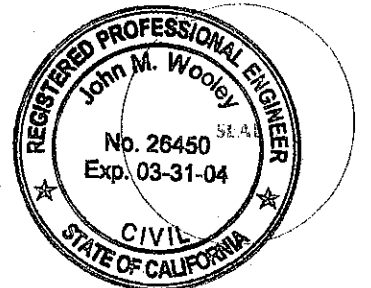


COUNTY SURVEYOR'S STATEMENT

This Corner Record was received OCTOBER 12, 2000 and examined

and filed OCTOBER 12, 2000

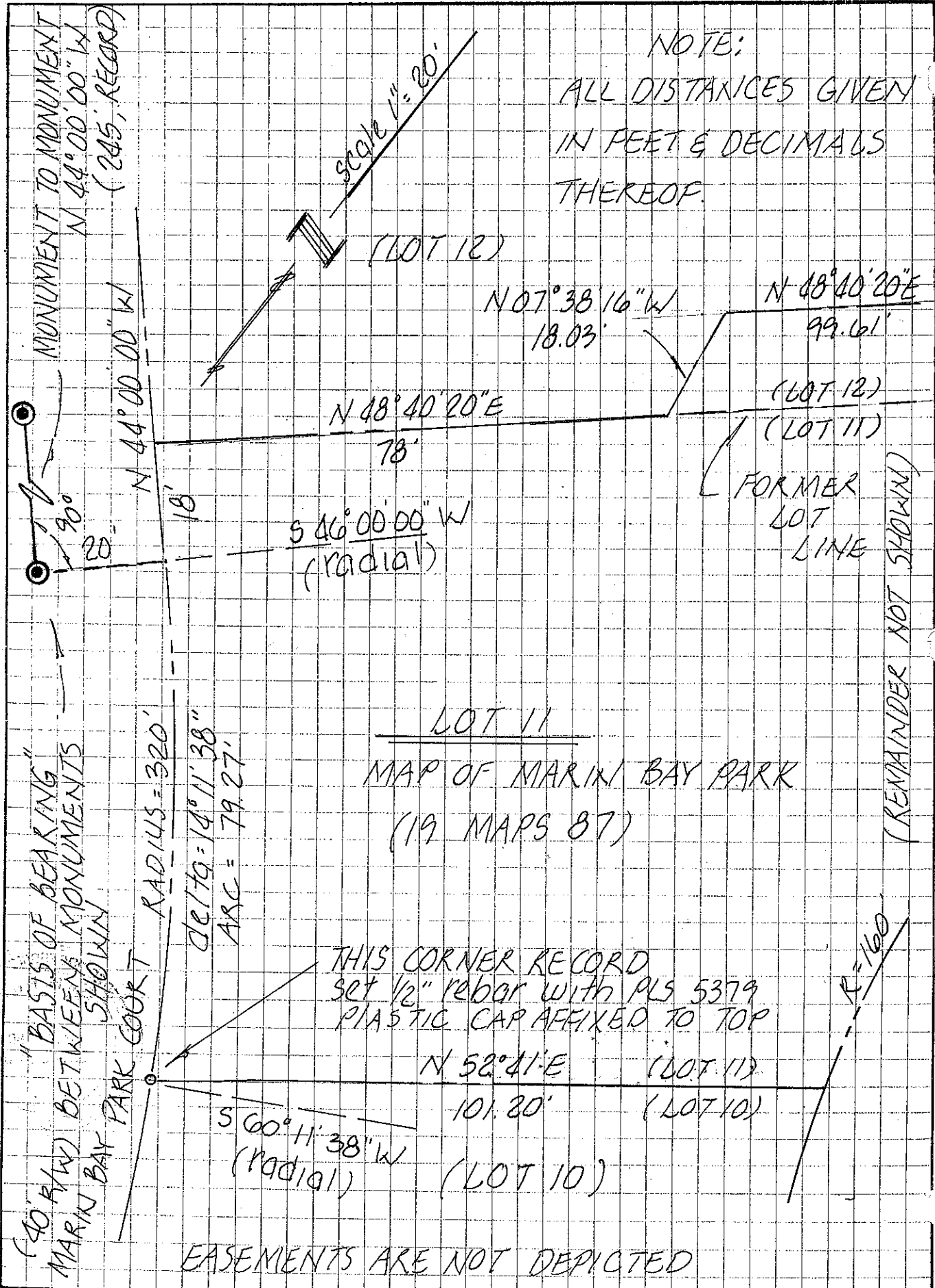
Signed John M. Woolley Title DEPUTY



County Surveyor's Comment _____

Prepared by: DJ SCRANTON SURVEYING 845 OLIVE AVE # 208 NOVATO, CA

JL 10040



NOTE:
ALL DISTANCES GIVEN
IN FEET & DECIMALS
THEREOF.

MONUMENT TO MONUMENT
N 44° 00' 00" W
(245', RECORD)

Scale 1" = 20'

(LOT 12)

N 07° 38' 16" W
18.03'

N 48° 40' 20" E
99.61'

N 48° 40' 20" E
78'

(LOT 12)
(LOT 11)

FORMER
LOT
LINE

S 46° 00' 00" W
(radial)

90°
20'

N 44° 00' 00" W
18'

LOT 11

MAP OF MARIN BAY PARK
(19 MAPS 87)

"BASIS OF BEARING"
(40' R/W) BETWEEN MONUMENTS
MARIN BAY PARK COURT
SHOWING

RADIUS = 320'
Chord = 14° 11' 38"
ARC = 79.27'

THIS CORNER RECORD
SET 1/2" REBAR WITH PLS 5379
PLASTIC CAP AFFIXED TO TOP

N 52° 41' E (LOT 11)
101.20' (LOT 10)

S 60° 11' 38" W
(radial) (LOT 10)

1" = 100'

(REMAINDER NOT SHOWN)

EASEMENTS ARE NOT DEPICTED