

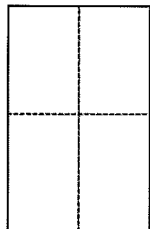
CORNER RECORD

Document Number 184-172-32

City of SAN RAFAEL

County of MARIN, California

Brief Legal Description LOT 191, MARIN BAY UNIT ONE, 10 R.M. 78, M.C.R.



CORNER TYPE

Government Corner Control
Meaneder Property
Rancho Other
Date of Survey _____

COORDINATES (Optional)

N. _____
E. _____
Zone _____ NAD27 NAD83
NAD83 Epoch _____
Elev. _____
Vert. Datum: NGVD29 NAVD88
Meas. Units: Metric Imperial

Corner - Left as found Found and tagged Established Reestablished Rebuilt

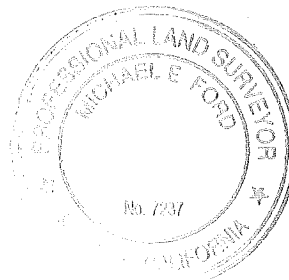
Identification and type of corner found: Evidence used to identify or procedure used to establish or reestablish the corner:
FOUND CENTERLINE MONUMENTS IN RIVIERA DRIVE USED IN REESTABLISHING
THE LOT CORNERS OF LOT 191, MARIN BAY UNIT ONE

A description of the physical condition of the monument as found and as set or reset:
SET 1/2" I.P. LS7237 ON REAR LOT CORNERS & SET REBAR & CAP LS7237
1.00 FT OFFSET TO FRONT LOT CORNERS AT BACK OF SIDEWALK

SURVEYOR'S STATEMENT

This Corner Record was prepared by me or under my direction in conformance with
the Land Surveyor's Act on DEC. 7, 2012

Signed Michael E. Ford P.L.S. or R.C.E. No. 7237



COUNTY SURVEYOR'S STATEMENT

This Corner Record was received JANUARY 14, 2013
and examined and filed JANUARY 28, 2013

Signed Richard G. Simonitch P.L.S. or R.C.E. No. 7821
Title DEPUTY COUNTY SURVEYOR

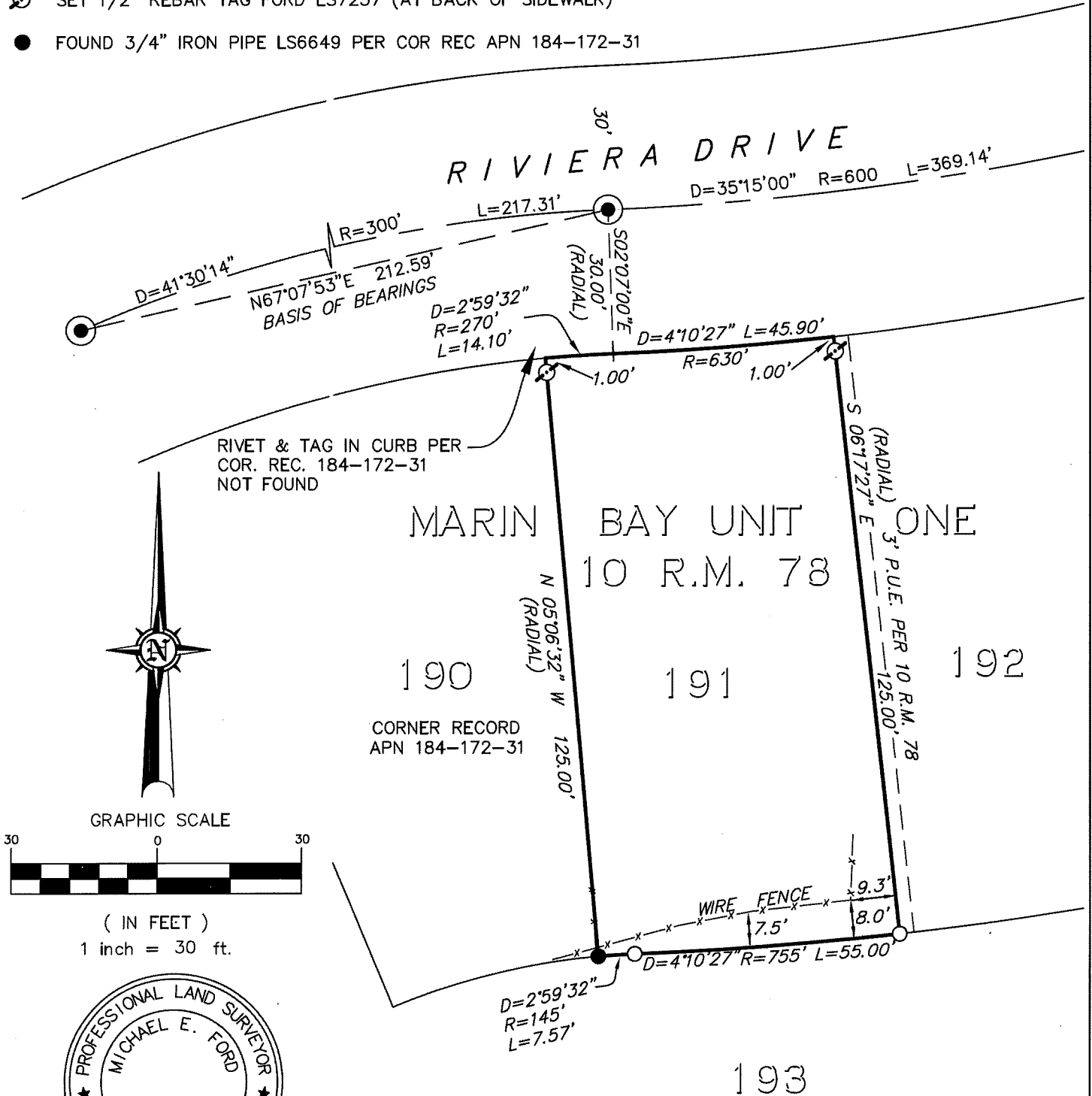


County Surveyor's Comment

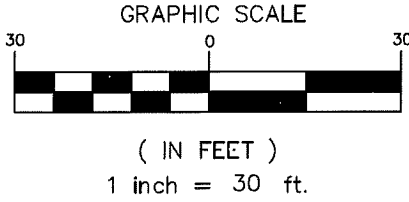
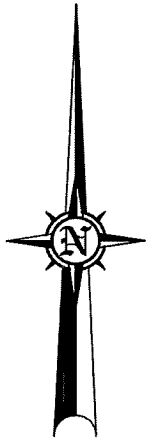
LEGEND

- FOUND IRON PIN IN MON. WELL PER MARIN BAY UNIT ONE
- SET 1/2" IRON PIPE TAG FORD LS7237
- ⊗ SET 1/2" REBAR TAG FORD LS7237 (AT BACK OF SIDEWALK)
- FOUND 3/4" IRON PIPE LS6649 PER COR REC APN 184-172-31

NOTE:
ALL DISTANCES ARE MEASURED IN FEET AND DECIMALS THEREOF.



RIVET & TAG IN CURB PER COR. REC. 184-172-31 NOT FOUND



michael ford inc.
2300 bethards drive suite J
santa rosa, california 95405
p 707.542-8513 - f 707.542.1825
www.michaelfordinc.com

PLAT OF SURVEY
352 RIVIERA DRIVE, SAN RAFAEL, CA
LOT 191, MARIN BAY UNIT ONE
10 RECORD MAPS 78, M.C.R.
JOB 091880 DATE: 12/10/12