

A. P. #184-172-22

### CORNER RECORD

COUNTY OF MARTIN T. \_\_\_\_\_ R. \_\_\_\_\_ MERIDIAN \_\_\_\_\_ CALIFORNIA

CORNER TYPE: GOV'T. CORNER  MEANDER  RANCHO  CONTROL  OTHER

CORNER IDENTIFICATION — DATE OF VISIT \_\_\_\_\_ 19\_\_\_\_



CORNER — LEFT AS FOUND  FOUND AND TAGGED  REESTABLISHED OBLITERATED CORNER  REBUILT

PHYSICAL DESCRIPTION OF CORNER FOUND; EVIDENCE AND METHOD USED TO IDENTIFY OR REESTABLISH

Set a 3/4" iron pipe with plastic plug "LS 3775" at the southeast corner of Lot 181 "Map of Marin Bay Unit One", 10-Maps-78, Marin County Records; by and per said map.

PHYSICAL DESCRIPTION OF MONUMENTS REBUILT OR PERPETUATED

As shown

AP 184-172-22

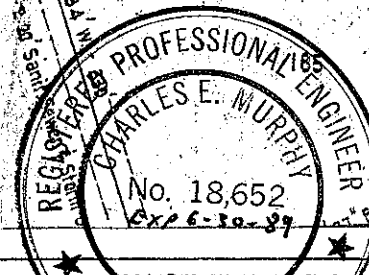
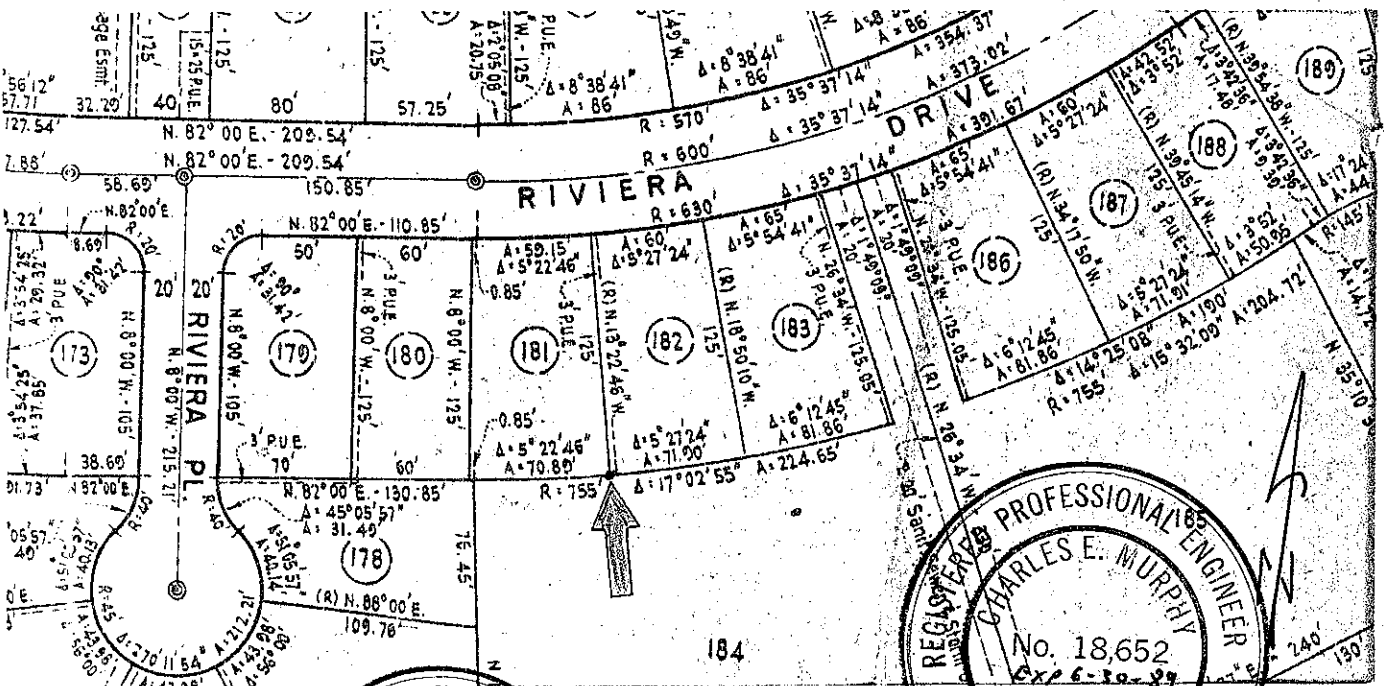
J 1444 Kelley

CALIFORNIA COORDINATE SYSTEM ORDER: FIRST  SECOND  THIRD

STATIONS USED: NGS (USC & GS)  STATE  COUNTY  OTHER  STATION \_\_\_\_\_ STATION \_\_\_\_\_

ZONE \_\_\_\_\_ ELEVATION \_\_\_\_\_ NORTHINGS (Y) \_\_\_\_\_ EASTINGS (X) \_\_\_\_\_

SKETCH: (Include reference tie or witness points, remarks and topo of area)



SURVEYOR'S CERTIFICATE  
THIS CORNER RECORD WAS PREPARED BY ME OR UNDER MY DIRECTION IN CONFORMANCE WITH THE LAND SURVEYORS ACT ON February 24 1986 NO. 3775

SIGNED: \_\_\_\_\_  
L.S. or P.C.E. No. \_\_\_\_\_

COUNTY SURVEYOR'S CERTIFICATE  
THE CORNER RECORD WAS RECEIVED March 12 1986  
AND EXAMINED AND FILED March 12 1986

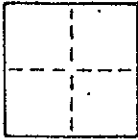
TITLE: Deputy County Surveyor

DOCUMENT No. \_\_\_\_\_  
STATEMENT ON BACK OF SHEET

YES  NO

# CORNER RECORD

COUNTY OF MARIN T. \_\_\_\_\_ R. \_\_\_\_\_ MERIDIAN \_\_\_\_\_ CALIFORNIA  
 CORNER TYPE: GOVT. CORNER  MEANDER  RANCHO  CONTROL  OTHER   
 CORNER IDENTIFICATION — DATE OF VISIT \_\_\_\_\_ 19\_\_\_\_



CORNER — LEFT AS FOUND  FOUND AND TAGGED  REESTABLISHED OBLITERATED CORNER  REBUILT

PHYSICAL DESCRIPTION OF CORNER FOUND; EVIDENCE AND METHOD USED TO IDENTIFY OR REESTABLISH

Set a brass tag "LS 3775" on top a wood fence at the southwest corner of Lot 181 "Map of Marin Bay Unit One", 10-Maps-78, Marin County Records; by and per said map.

PHYSICAL DESCRIPTION OF MONUMENTS REBUILT OR PERPETUATED

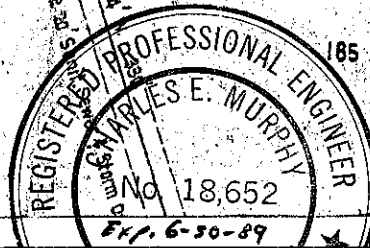
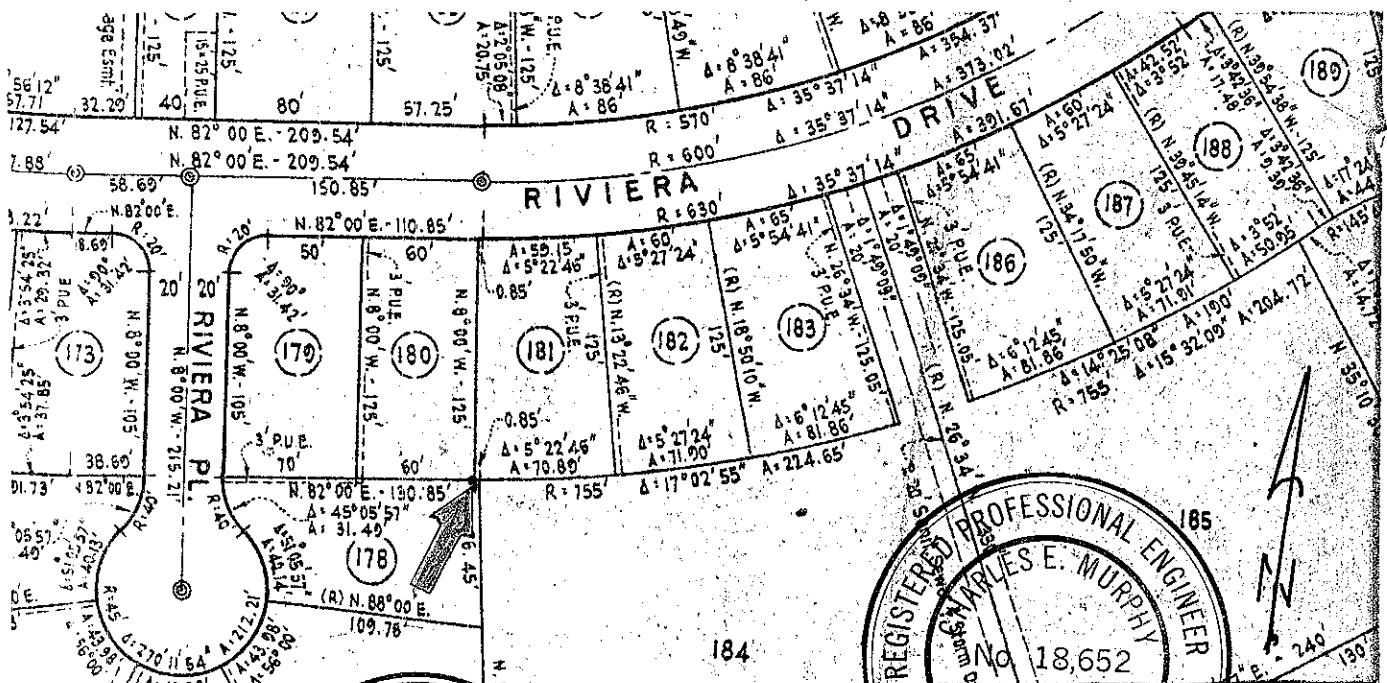
As shown

AP 184-172-22

J 1444 Kelley

CALIFORNIA COORDINATE SYSTEM ORDER: FIRST  SECOND  THIRD   
 STATIONS USED: NGS (USC & GS)  STATE  COUNTY  OTHER  STATION \_\_\_\_\_ STATION \_\_\_\_\_  
 ZONE \_\_\_\_\_ ELEVATION \_\_\_\_\_ NORTHINGS (Y) \_\_\_\_\_ EASTINGS (X) \_\_\_\_\_

SKETCH: (Include reference tie or witness points, remarks and topo of area)



**RECEIVED LAND SURVEYOR'S CERTIFICATE**  
 THIS CORNER RECORD WAS PREPARED BY ME OR UNDER MY DIRECTION IN CONFORMANCE WITH THE LAND SURVEYORS ACT ON February 24 1986  
 SIGNED: [Signature]  
 L.S. or R.C.E. No. LS 3775  
 STATE OF CALIFORNIA

**COUNTY SURVEYOR'S CERTIFICATE**  
 THE CORNER RECORD WAS RECEIVED March 12 1986  
 AND EXAMINED AND FILED March 12 1986  
 BY: [Signature]  
 TITLE: Deputy County Surveyor

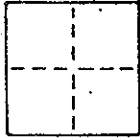
DOCUMENT No. \_\_\_\_\_  
 STATEMENT ON BACK OF SHEET YES  NO

# CORNER RECORD

COUNTY OF MARIN T. \_\_\_\_\_ R. \_\_\_\_\_ MERIDIAN \_\_\_\_\_ CALIFORNIA

CORNER TYPE: GOV'T. CORNER  MEANDER  RANCHO  CONTROL  OTHER

CORNER IDENTIFICATION — DATE OF VISIT \_\_\_\_\_ 19\_\_\_\_



CORNER — LEFT AS FOUND  FOUND AND TAGGED  REESTABLISHED OBLITERATED CORNER  REBUILT

**PHYSICAL DESCRIPTION OF CORNER FOUND; EVIDENCE AND METHOD USED TO IDENTIFY OR REESTABLISH**

Set a lead plug and brass tag "LS 3775" at the northeast corner of Lot 181 "Map of Marin Bay Unit One", 10-Maps-78, Marin County Records; by and per said map.

**PHYSICAL DESCRIPTION OF MONUMENTS REBUILT OR PERPETUATED**

As shown

AP 184-172-22

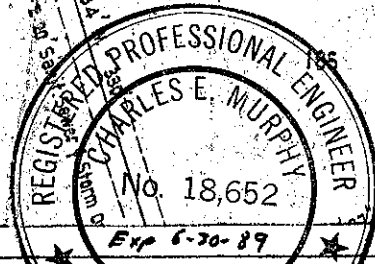
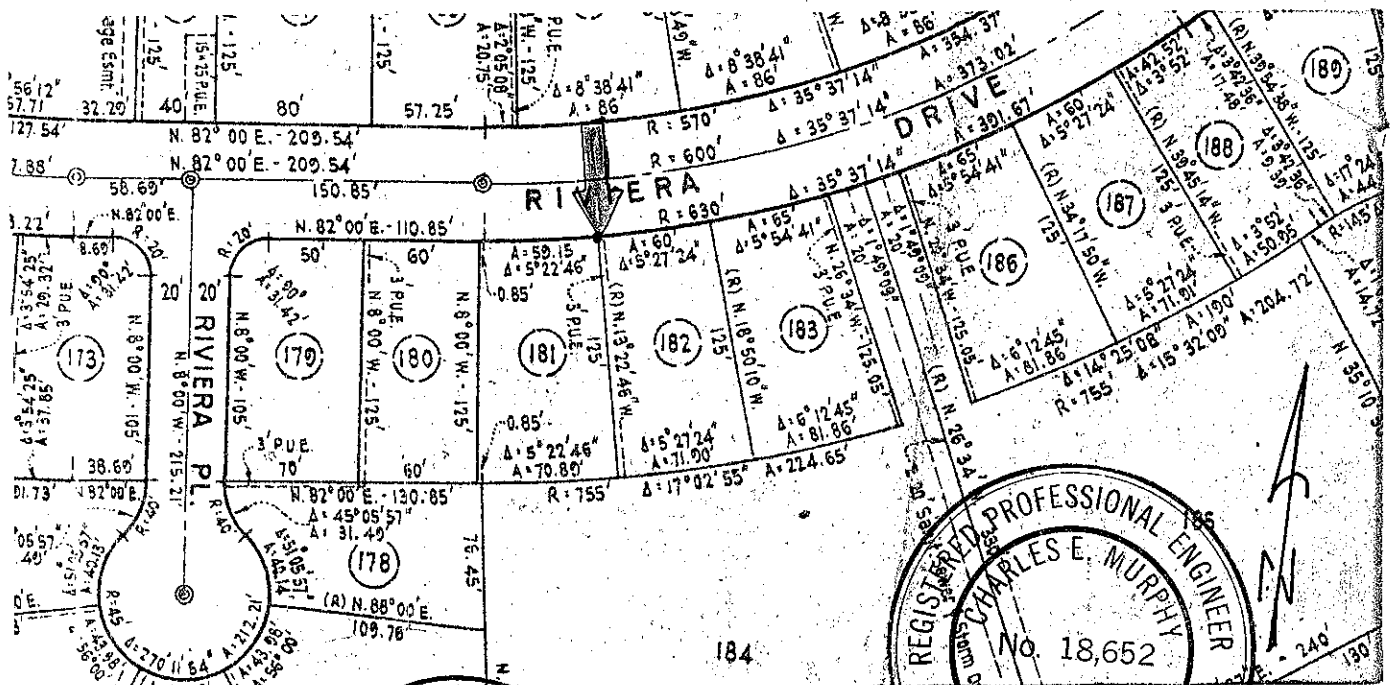
J 1444 Kelley

CALIFORNIA COORDINATE SYSTEM ORDER: FIRST  SECOND  THIRD

STATIONS USED: NGS (USC & GS)  STATE  COUNTY  OTHER  STATION \_\_\_\_\_ STATION \_\_\_\_\_

ZONE \_\_\_\_\_ ELEVATION \_\_\_\_\_ NORTHINGS (Y) \_\_\_\_\_ EASTINGS (X) \_\_\_\_\_

**SKETCH: (Include reference tie or witness points, remarks and topo of area)**



**SURVEYOR'S CERTIFICATE**

THIS CORNER RECORD WAS PREPARED BY ME OR UNDER MY DIRECTION IN CONFORMANCE WITH THE LAND SURVEYORS ACT ON February 24 1986

SIGNED: *[Signature]*

L.S. or R.C.E. No.: 3775

STATE OF CALIFORNIA

**COUNTY SURVEYOR'S CERTIFICATE**

THE CORNER RECORD WAS RECEIVED March 12 1986 AND EXAMINED March 12 1986

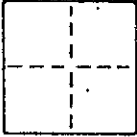
TITLE: Deputy County Surveyor

DOCUMENT No. \_\_\_\_\_

STATEMENT ON BACK OF SHEET YES  NO

**CORNER RECORD**

COUNTY OF MARIN T. \_\_\_\_\_ R. \_\_\_\_\_ MERIDIAN \_\_\_\_\_ CALIFORNIA  
 CORNER TYPE: GOVT. CORNER  MEANDER  RANCHO  CONTROL  OTHER   
 CORNER IDENTIFICATION — DATE OF VISIT \_\_\_\_\_ 19\_\_\_\_



CORNER — LEFT AS FOUND  FOUND AND TAGGED  REESTABLISHED OBLITERATED CORNER  REBUILT

PHYSICAL DESCRIPTION OF CORNER FOUND; EVIDENCE AND METHOD USED TO IDENTIFY OR REESTABLISH

Set a 3/4" iron pipe with plastic plug "LS 3775" at the northwest corner of Lot 181 "Map of Marin Bay Unit One", 10-Maps-78, Marin County Records; by and per said map.

PHYSICAL DESCRIPTION OF MONUMENTS REBUILT OR PERPETUATED

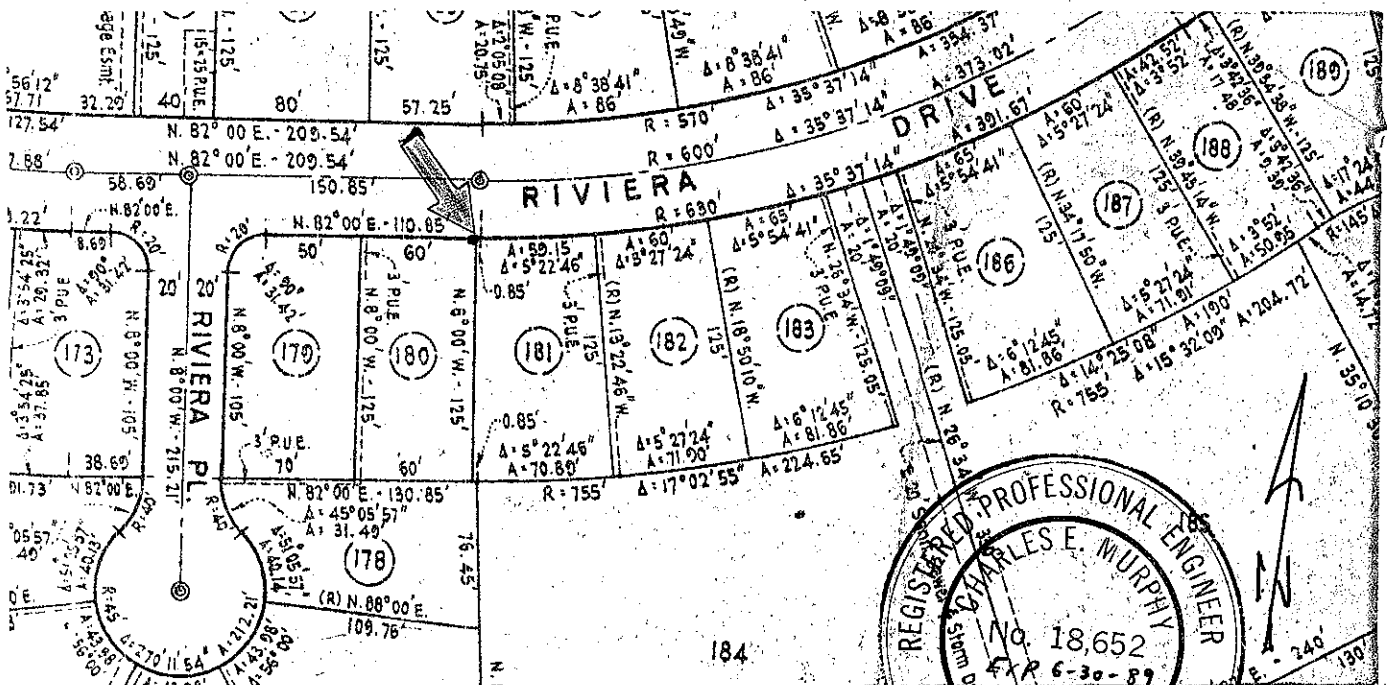
As shown

AP 184-172-22

J 1444 Kelley

CALIFORNIA COORDINATE SYSTEM ORDER: FIRST  SECOND  THIRD   
 STATIONS USED: NGS (USC & GS)  STATE  COUNTY  OTHER  STATION \_\_\_\_\_ STATION \_\_\_\_\_  
 ZONE \_\_\_\_\_ ELEVATION \_\_\_\_\_ NORTHINGS (Y) \_\_\_\_\_ EASTINGS (X) \_\_\_\_\_

SKETCH: (Include reference tie or witness points, remarks and topo of area)



SURVEYOR'S CERTIFICATE  
 THIS CORNER RECORD WAS PREPARED BY ME OR UNDER MY DIRECTION IN CONFORMANCE WITH THE LAND SURVEYORS ACT ON February 24 1986

SIGNED: [Signature]  
 L.S. or R.C.E. No.: LS 3775

COUNTY SURVEYOR'S CERTIFICATE  
 THE CORNER RECORD WAS RECEIVED March 12 1986 AND EXAMINED AND FILED March 12 1986  
 BY: [Signature]  
 TITLE: Deputy County Surveyor

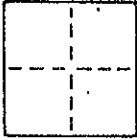
DOCUMENT No. \_\_\_\_\_  
 STATEMENT ON BACK OF SHEET YES  NO

# CORNER RECORD

COUNTY OF MARIN T. \_\_\_\_\_ R. \_\_\_\_\_ MERIDIAN \_\_\_\_\_ CALIFORNIA

CORNER TYPE: GOV'T. CORNER  MEANDER  RANCHO  CONTROL  OTHER

CORNER IDENTIFICATION — DATE OF VISIT \_\_\_\_\_ 19\_\_\_\_



CORNER — LEFT AS FOUND  FOUND AND TAGGED  REESTABLISHED OBLITERATED CORNER  REBUILT

PHYSICAL DESCRIPTION OF CORNER FOUND; EVIDENCE AND METHOD USED TO IDENTIFY OR REESTABLISH

Set a brass tag "LS 3775" and 20d nail on a wood fence being the beginning of a curve having a radius of 755 feet, near the southwest corner of Lot 181 "Map of Marin Bay Unit One", 10-Maps-78, Marin County Records; by and per said map.

PHYSICAL DESCRIPTION OF MONUMENTS REBUILT OR PERPETUATED

As shown

AP 184-172-22

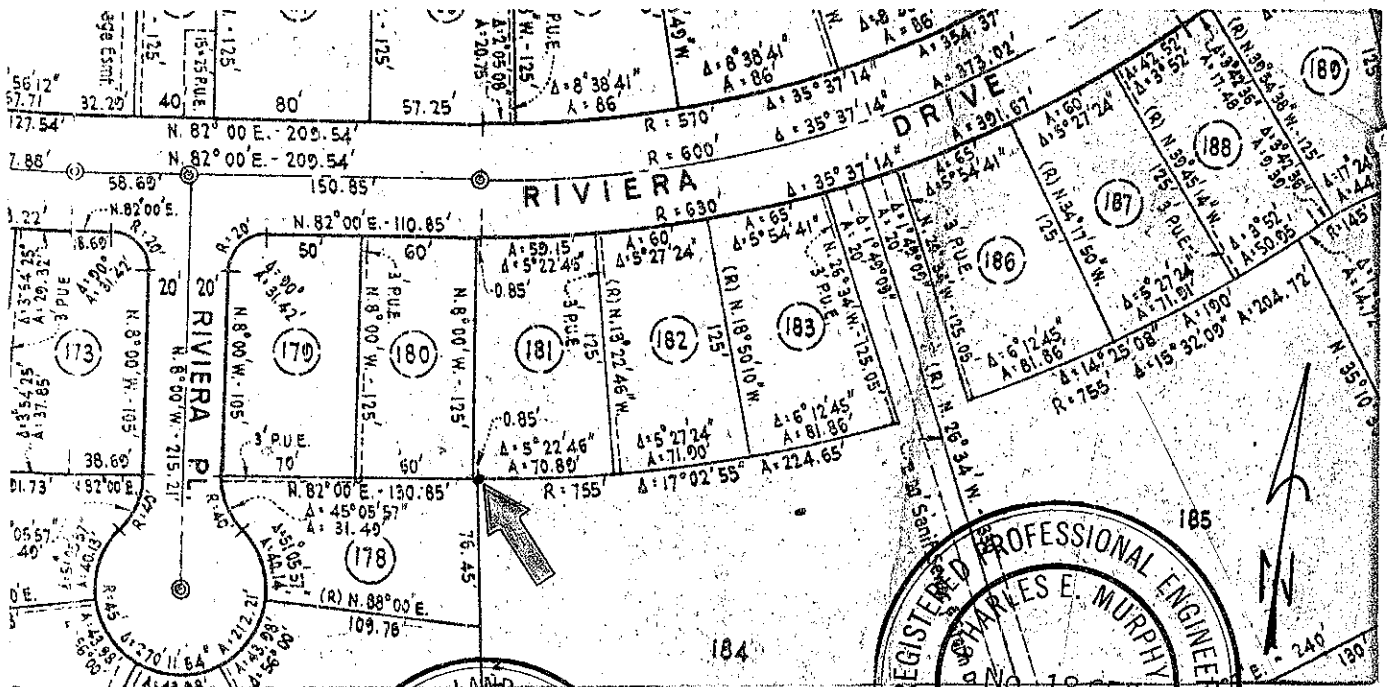
J 1444 Kelley

CALIFORNIA COORDINATE SYSTEM ORDER: FIRST  SECOND  THIRD

STATIONS USED: NGS (USC & GS)  STATE  COUNTY  OTHER  STATION \_\_\_\_\_ STATION \_\_\_\_\_

ZONE \_\_\_\_\_ ELEVATION \_\_\_\_\_ NORTHINGS (Y) \_\_\_\_\_ EASTINGS (X) \_\_\_\_\_

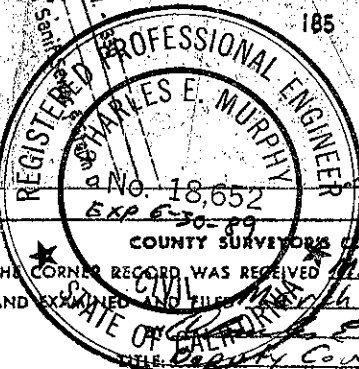
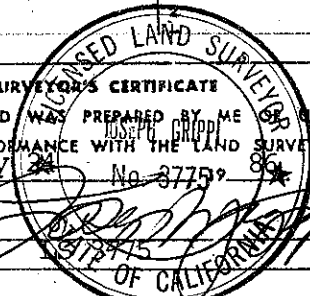
SKETCH: (Include reference tie or witness points, remarks and topo of area)



**SURVEYOR'S CERTIFICATE**

THIS CORNER RECORD WAS PREPARED BY ME OR UNDER MY DIRECTION IN CONFORMANCE WITH THE LAND SURVEYORS ACT ON February 24 No. 37759

SIGNED: \_\_\_\_\_  
L.S. or R.C.E. No. \_\_\_\_\_



**COUNTY SURVEYOR'S CERTIFICATE**

THE CORNER RECORD WAS RECEIVED March 12, 1986 AND EXAMINED AND FILED March 12, 1986 IN THE OFFICE OF THE COUNTY SURVEYOR STATE OF CALIFORNIA

DOCUMENT No. \_\_\_\_\_  
STATEMENT ON BACK OF SHEET

YES  NO