

# CORNER RECORD

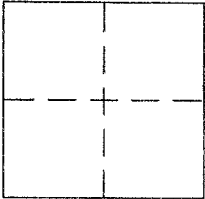
DPW # 17-22

Document Number APN 184-171-17

City of SAN RAFAEL

County of MARIN, California

Brief Legal Description LOT 35 PER 10 RM 78



### CORNER TYPE

Government Corner  Control   
 Meander  Property   
 Rancho  Other   
 Date of Survey 2/22/2017

### COORDINATES (Optional)

N. \_\_\_\_\_  
 E. \_\_\_\_\_  
 Zone \_\_\_\_\_ NAD27  NAD83   
 NAD83 Epoch \_\_\_\_\_  
 Elev. \_\_\_\_\_  
 Vert. Datum: NGVD29  NAVD88   
 Meas. Units: Metric  Imperial

Corner - Left as found  Found and tagged  Established  Reestablished  Rebuilt

Identification and type of corner found: Evidence used to identify or procedure used to establish or reestablish the corner:

SEE PAGE 2

A description of the physical condition of the monument as found and as set or reset:

SEE PAGE 2

### SURVEYOR'S STATEMENT

This Corner Record was prepared by me or under my direction in conformance with the Land Surveyor's Act on APRIL 11 2018

Signed [Signature] P.L.S. or R.C.E. No. 6784



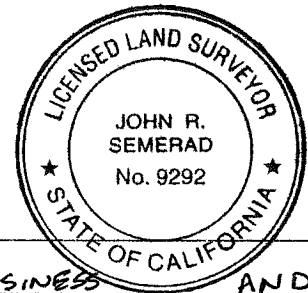
### COUNTY SURVEYOR'S STATEMENT

This Corner Record was received MARCH 13, 2017

and examined and filed MAY 02, 2018

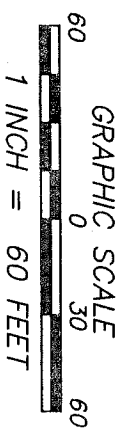
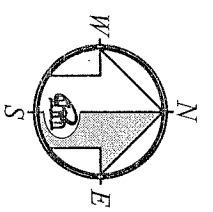
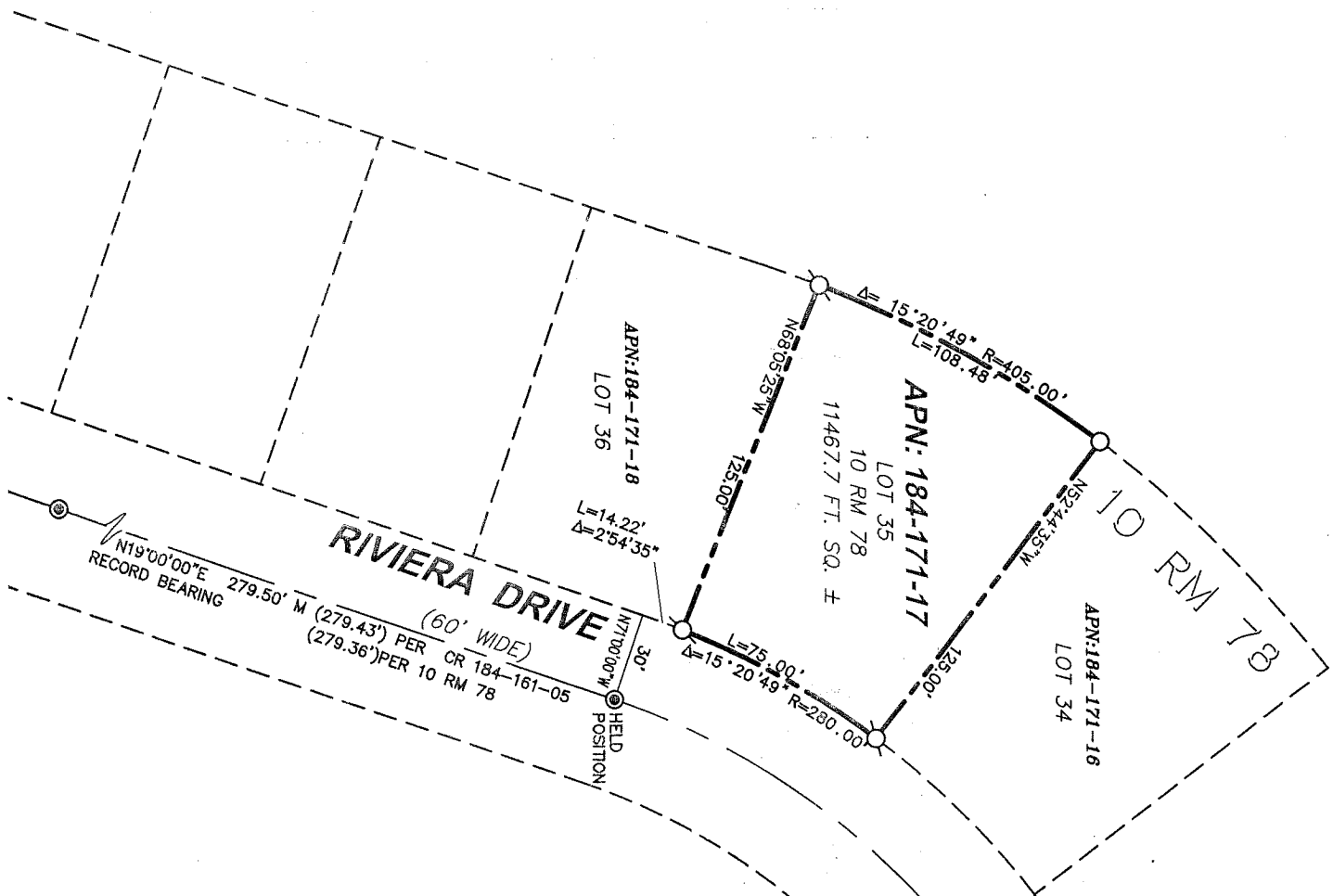
Signed [Signature] P.L.S. or R.C.E. No. 9292

Title DEPUTY C.S.



County Surveyor's Comment IT IS THE OPINION OF THE DEPUTY C.S.

THAT THE FILING OF THIS C.R. DOES NOT COMPLY WITH BUSINESS AND PROFESSIONS CODE SEC. 8765(d), AS SUFFICIENT MONUMENTATION WAS NOT SHOWN TO ESTABLISH THE PRECISE LOCATION OF PROPERTY CORNERS. MONS. OR OTHER EVIDENCE MAY EXIST & IF RECOVERED & CONSIDERED IN DETERMINING THE LOCATION OF THE SUBJECT PROP. COR. & LINES, MAY RESULT IN MATERIAL 1 of 2 ALTERNATE POSITION OF SAID PROP. COR. & LINES.



**REFERENCE**

"MAP OF MARIN BAY UNIT ONE, SAN RAFAEL, CALIFORNIA" FILED FOR RECORD 9/22/1960 IN VOLUME 10 OF MAPS, AT PAGE 78, MARIN COUNTY RECORDS.

CORNER RECORD NO. 184-161-05

**LEGEND**

- ⊙ FOUND STREET MONUMENT
- ⊙ CONCRETE BASE & BRASS PIN
- SET 5/8" REBAR WITH CAP, PLS 6784
- SET NAIL & 1" BRASS TAG, PLS 6784

NOTE:  
RECORD=MEASURED.

**CORNER RECORD**

**MERIDIAN SURVEYING**  
ENGINEERING, INC.

2968 VAN NESS AVENUE 17015 777 GRAND AVENUE, #202  
SAN FRANCISCO, CA 94109 SAN RAFAEL, CA 94901  
(415) 440-4131 info@meridiansurvey.com (415) 456-5450