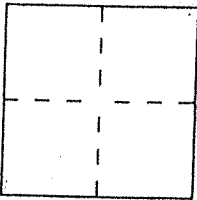


CORNER RECORD

City of San Rafael Document Number 184-171-15 & 16  
County of Marin, California  
Brief Legal Description lots 34 & 35 of 10 RM 78



CORNER TYPE

Government Corner  Control   
Meander  Property   
Rancho  Other   
Date of Survey \_\_\_\_\_

COORDINATES  
(Optional)

N. \_\_\_\_\_  
E. \_\_\_\_\_  
Zone \_\_\_\_\_ Datum \_\_\_\_\_  
Elev. \_\_\_\_\_

Corner — Left as found  Found and tagged  Established  Reestablished  Rebuilt

Identification and type of corner found: Evidence used to identify or procedure used to establish or reestablish the corner:  
Found Standard Street Monuments and iron bars.

A description of the physical condition of the monument as found and as set or reset:  
Set 1/2" iron bars with Cap Embossed LS 5290

SURVEYOR'S STATEMENT

This Corner Record was prepared by me or under my direction in conformance with the Land Surveyors' Act on August 17, 2012

Signed David Harp L.S. or R.C.E. Number LS 5290

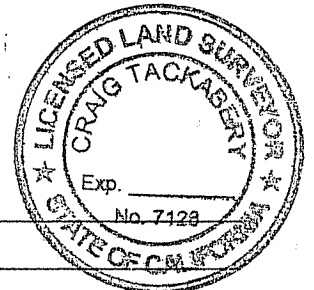


COUNTY SURVEYOR'S STATEMENT

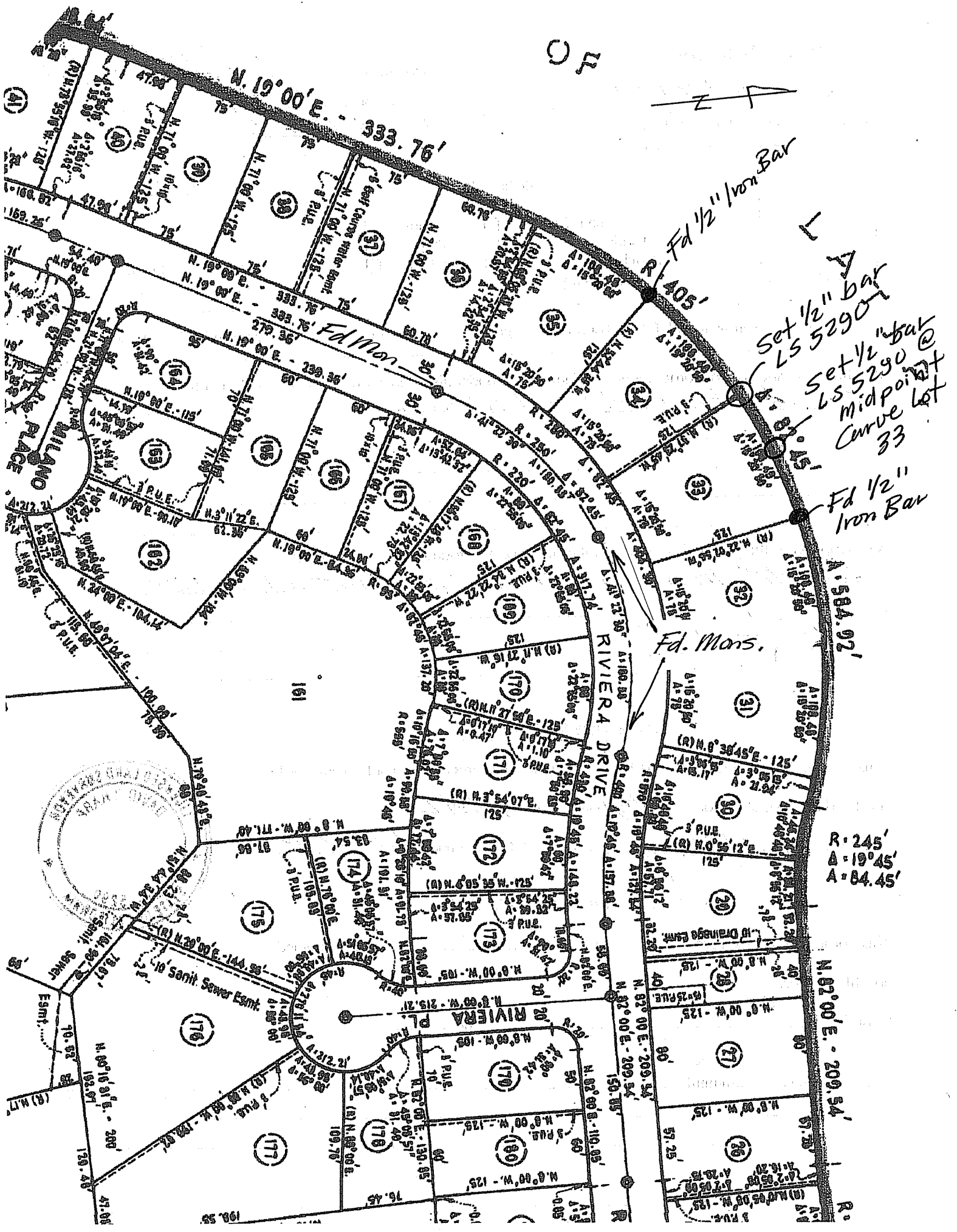
This Corner Record was received AUGUST 21, 2012 and examined

and filed SEPTEMBER 12, 2012

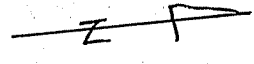
Signed \_\_\_\_\_ Title COUNTY SURVEYOR



County Surveyor's Comment \_\_\_\_\_



CL



Set 1/2" bar  
LS 5290  
Set 1/2" bar  
LS 5290  
midpoint  
Curve lot  
33  
Fd 1/2"  
Iron Bar

R = 245'  
A = 19° 45'  
A = 84.45'

N. 02° 00' E. - 209.54'

Fd. Mans.

RIVERA DRIVE

Fd Mon

MILANO

PLACE

Sanit. Sewer Esmt.

Sanit. Sewer

Esmt.

(R) M. 17