

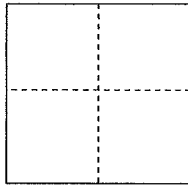
CORNER RECORD

Documented Number 184-171-02

City of San Rafael

County of Marin, California

Brief Legal Description Lot 19, Map of Marin Bay Unit One , 10 RM 78



CORNER TYPE

Government Corner Control
 Meander Property
 Rancho Other

COORDINATES(Optional)

N. _____
 E. _____
 Zone _____ NAD27 NAD83
 NAD83 Epoch _____
 Elevation _____
 Vert. Datum: NGVD 29 NADV88
 Meas. Units: Metric Imperial

Date of Survey May 12, 2016

Corner- Left as found Found and tagged Established Reestablished Rebuilt

Identification and type of corner found: Evidence used to identify or procedure used to establish or reestablish the corner:

Reestablish the rear line of Lot 20, Map of Marin Bay Unit One, 10 RM 78 from street monuments (nail in concrete cylinder inside of a standard well type monument casing) on Riviera Drive as said monuments are depicted upon 10 RM 78 and as also shown on the Marin County Corner Record for APN 184-171-03 done by this office and filed September 13, 2011. See sketch on reverse side for details.

A description of the physical condition of the monument as found and as set or reset: **Set one half inch rebar with yellow plastic cap attached to the top of the rebar and driven flush to the surrounding grade. The cap is stamped "Scranton, PLS 5379". See sketch on reverse side for specific location of points set per this retracement survey.**

SURVEYOR'S STATEMENT

This Corner Record was prepared by me or under my direction in conformance with

the Land Surveyor's Act on June 6, 2016

Signed *Douglas J. Scranton* P.L.S. or R.C.E. No.: PLS 5379



COUNTY SURVEYOR'S STATEMENT

This Corner Record was received JUNE 13, 2016 and examined

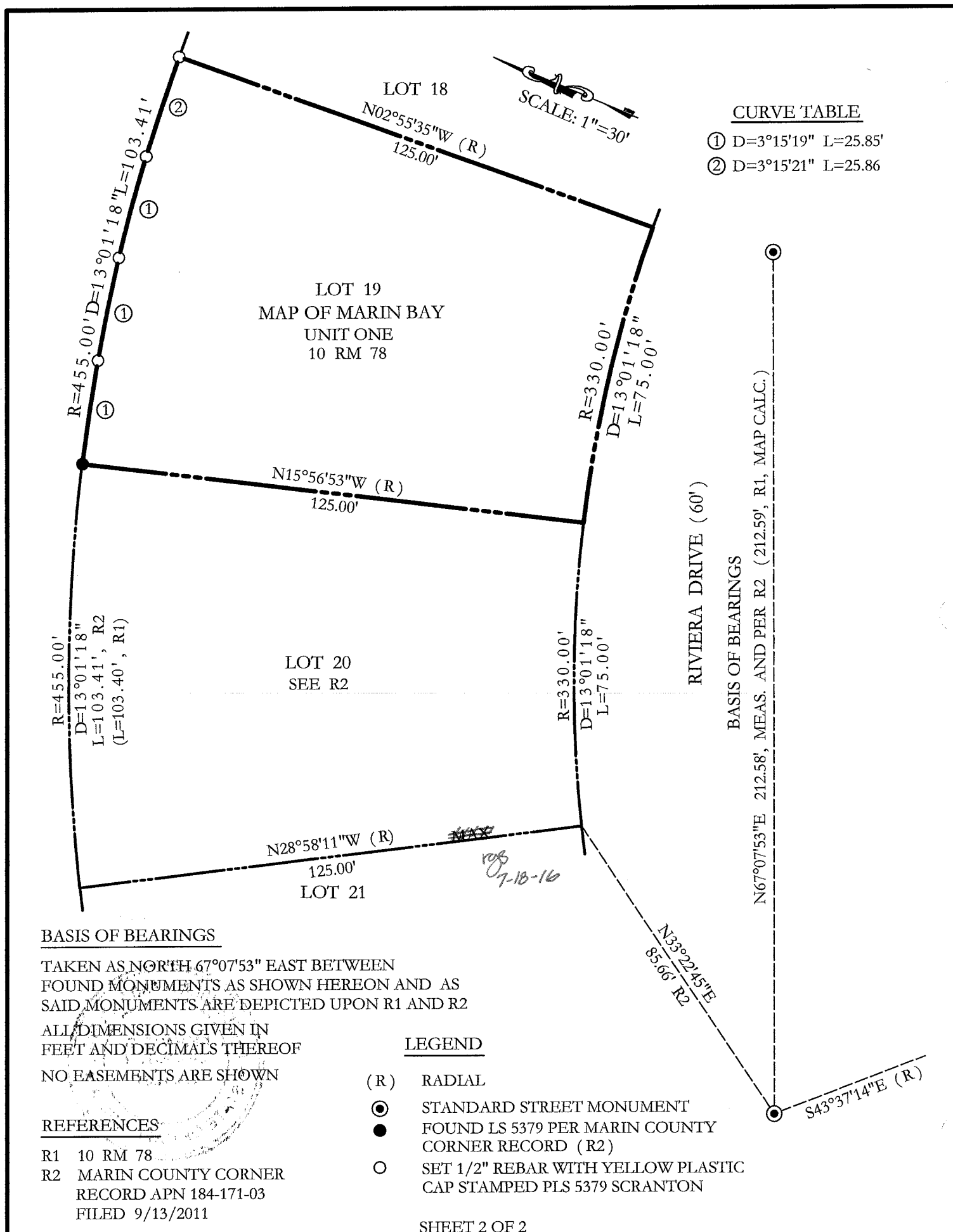
and filed July 5, 2016

Signed *R. K. Smith* P.L.S. or R.C.E. No.: 7821

Title County Surveyor

County Surveyor's Comment _____





CURVE TABLE

- ① D=3°15'19" L=25.85'
- ② D=3°15'21" L=25.86'

SCALE: 1"=30'

BASIS OF BEARINGS

BASIS OF BEARINGS

TAKEN AS NORTH 67°07'53" EAST BETWEEN FOUND MONUMENTS AS SHOWN HEREON AND AS SAID MONUMENTS ARE DEPICTED UPON R1 AND R2
 ALL DIMENSIONS GIVEN IN FEET AND DECIMALS THEREOF
 NO EASEMENTS ARE SHOWN

REFERENCES

- R1 10 RM 78
- R2 MARIN COUNTY CORNER RECORD APN 184-171-03 FILED 9/13/2011

LEGEND

- (R) RADIAL
- ⊙ STANDARD STREET MONUMENT
- FOUND LS 5379 PER MARIN COUNTY CORNER RECORD (R2)
- SET 1/2" REBAR WITH YELLOW PLASTIC CAP STAMPED PLS 5379 SCRANTON