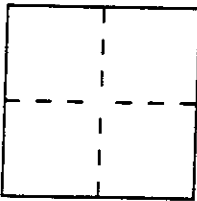


CORNER RECORD

City of San Rafael Document Number I.N. 81-1541
 County of Marin, California
 Brief Legal Description Lot 142, Map of Marin Bay Park Unit One; 10 -M-78, Marin County Records.



CORNER TYPE

Government Corner Control
 Meander Property
 Rancho Other
 Date of Survey _____

COORDINATES (Optional)

N. _____
 E. _____
 Zone _____ Datum _____
 Elev. _____

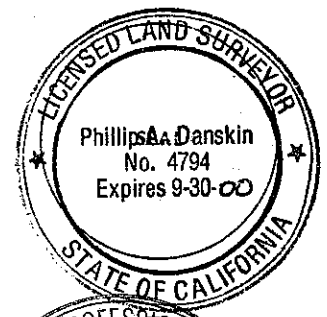
Corner — Left as found Found and tagged Established Reestablished Rebuilt

Identification and type of corner found: Evidence used to identify or procedure used to establish or reestablish the corner:
Set 3/4" I.D. galvanized iron pipe with plastic plug "PLS 4794" at southwest and most northerly corners of Lot 142, and at the most northerly corner Lot 139; set lead plug with bronze nail & tag "LS 4794" in concrete fence foundation at the northeast corner of Lot 140; set 1 1/2" x 1 1/2" redwood hub with Bronze nail & tag "LS 4794" at the most southerly corner Lot 143, and at a point S 37° 12' 15" W 12.38' from the most northerly corner Lot 139 Map of Marin Bay Park Unit One, recorded in Book 10 of Maps at Page 78, Marin County Records.

A description of the physical condition of the monument as found and as set or reset: _____
As shown upon reverse side.

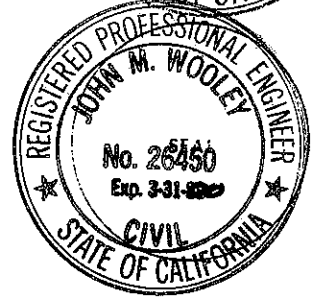
SURVEYOR'S STATEMENT

This Corner Record was prepared by me or under my direction in conformance with the Land Surveyors' Act on October 13, 19 97.
 Signed [Signature] L.S. or R.C.E. Number PLS 4794

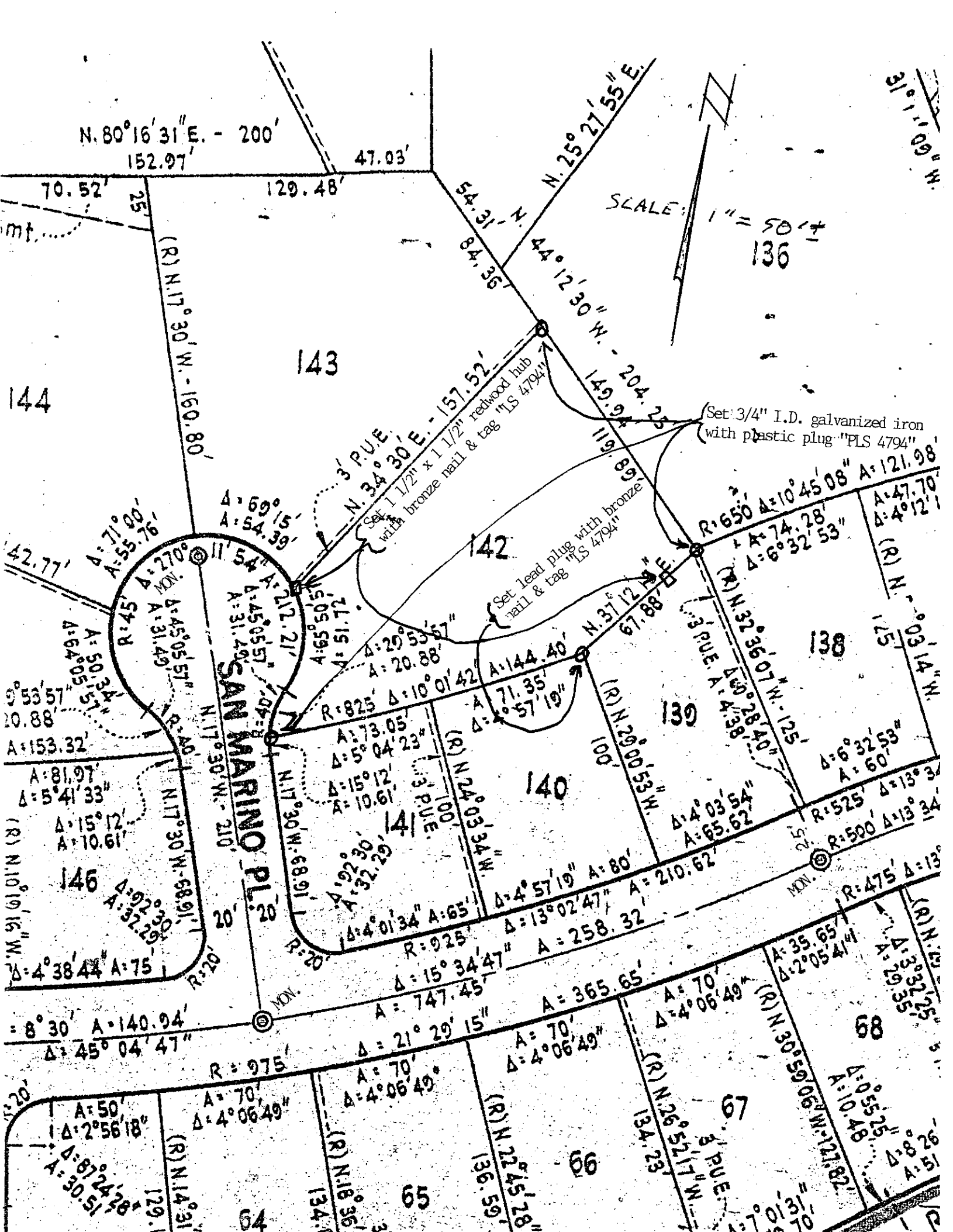


COUNTY SURVEYOR'S STATEMENT

This Corner Record was received October 14 19 97 and examined and filed October 14 19 97.
 Signed [Signature] Title Deputy



County Surveyor's Comment _____



N. 80° 16' 31" E. - 200'
152.97'

SCALE: 1" = 50'
136

143

144

Set 3/4" I.D. galvanized iron
with plastic plug "PLS 4794"

3' P.U.E.
N. 34° 30' E. - 157.52'
Set 1 1/2" x 1 1/2" redwood hub
with bronze nail & tag "LS 4794"

Set lead plug with bronze
nail & tag "LS 4794"

SAN MARINO PL.
N. 17° 30' W. - 210'

MON.
R: 45' A: 270°
A: 57.77'
A: 55.76'
A: 71° 00'
A: 50.34'
A: 64° 05' 57"
A: 153.32'
A: 81.97'
A: 5° 41' 33"
A: 15° 12'
A: 10.61'
A: 92° 30'
A: 32.29'
A: 4° 38' 44"
A: 75'

MON.
R: 825' A: 10° 01' 42"
A: 73.05'
A: 5° 04' 23"
A: 15° 12'
A: 10.61'
R: 925' A: 15° 34' 47"
A: 747.45'

MON.
R: 100' A: 29° 00' 53" N.
A: 144.40'
A: 71.35'
A: 5° 57' 19"
R: 925' A: 15° 34' 47"
A: 747.45'

MON.
R: 650' A: 10° 45' 08" A: 121.98'
A: 74.28'
A: 6° 32' 53"
R: 525' A: 13° 34'
R: 500' A: 13° 34'
R: 475' A: 13° 34'

MON.
R: 975' A: 70'
A: 4° 06' 49"
R: 124.517' N.
A: 35.65'
A: 2° 05' 41"
R: 134.23'
A: 70'
A: 4° 06' 49"
R: 136.59'
A: 70'
A: 4° 06' 49"
R: 118.82'
A: 35.65'
A: 2° 05' 41"
R: 134.23'
A: 70'
A: 4° 06' 49"
R: 136.59'
A: 70'
A: 4° 06' 49"

MON.
R: 975' A: 70'
A: 4° 06' 49"
R: 118.36'
A: 70'
A: 4° 06' 49"
R: 134.23'
A: 70'
A: 4° 06' 49"

MON.
R: 975' A: 70'
A: 4° 06' 49"
R: 136.59'
A: 70'
A: 4° 06' 49"

MON.
R: 975' A: 70'
A: 4° 06' 49"
R: 134.23'
A: 70'
A: 4° 06' 49"

MON.
R: 975' A: 70'
A: 4° 06' 49"
R: 134.23'
A: 70'
A: 4° 06' 49"