

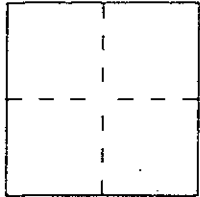
CORNER RECORD

Document Number AP#S 184-161-10&11

City of SAN RAFAEL

County of MARIN, California

Brief Legal Description LOTS 46 & 47 - MAP OF MARIN BAY UNIT ONE



CORNER TYPE

Government Corner Control
 Meander Property
 Rancho Other
 Date of Survey OCT. 9, 1997

COORDINATES (Optional)

N. _____
 E. _____
 Zone _____ Datum _____
 Elev. _____

Corner — Left as found Found and tagged Established Reestablished Rebuilt

Identification and type of corner found: Evidence used to identify or procedure used to establish or reestablish the corner:

FOUND STD. STREET MONUMENTS AS PER RECORD MAP (10 RM 78)

A description of the physical condition of the monument as found and as set or reset:

SET 3/4" IRON PIPE W/ PLASTIC CAP RCE 30465
SEE PAGE 2

SURVEYOR'S STATEMENT

This Corner Record was prepared by me or under my direction in conformance with the Land Surveyors' Act on OCT 9, 1997.

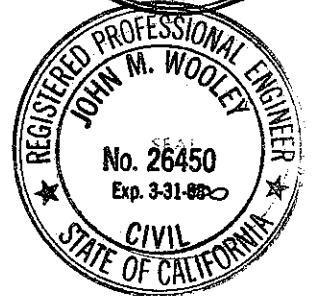
Signed Jay P. Hg L.S. or R.C.E. Number RCE 30465



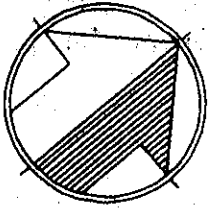
COUNTY SURVEYOR'S STATEMENT

This Corner Record was received OCTOBER 24 1997 and examined and filed OCTOBER 27 1997.

Signed John M. Wooley Title DEPUTY



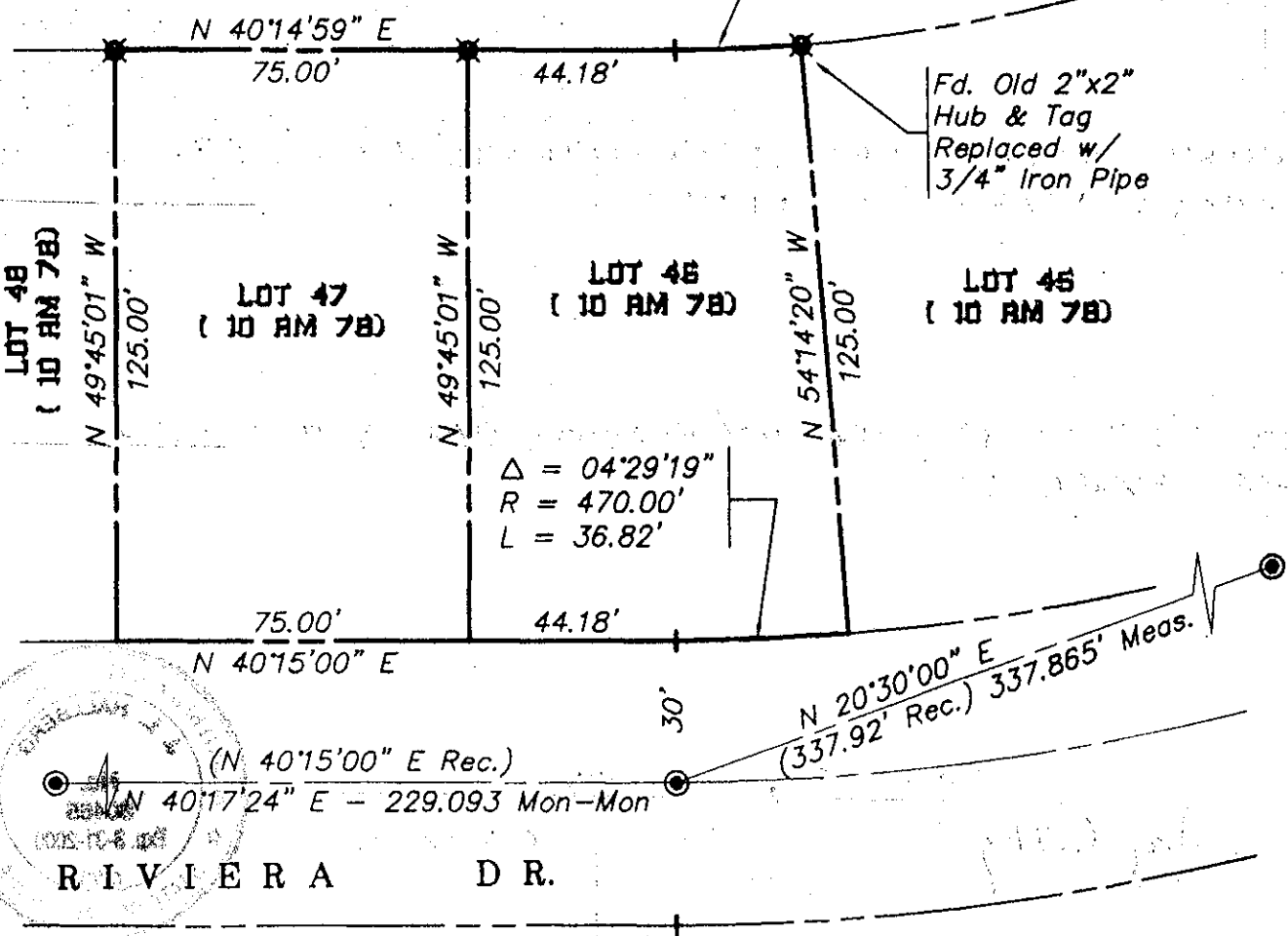
County Surveyor's Comment _____



SCALE 1" = 40'

$\Delta = 04^{\circ}29'19''$
 $R = 345.00'$
 $L = 27.03'$

Fd. Old 2"x2"
Hub & Tag
Replaced w/
3/4" Iron Pipe



$\Delta = 04^{\circ}29'19''$
 $R = 470.00'$
 $L = 36.82'$

$N 20^{\circ}30'00'' E$
(337.92' Rec.) 337.865' Meas.

(N 40°15'00" E Rec.)
N 40°17'24" E - 229.093 Mon-Mon

RIVIERA DR.

- ⊗ Set 3/4" Iron Pipe w/ Cap RCE 30465
- ⊙ Found Standard County Monument
- Reference-Map of Marin Estates (10 RM 78)