



JERRICO ASSOCIATES

SUITE 27
77 MARK DRIVE
SAN RAFAEL, CA 94903

7169

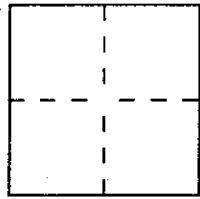
CORNER RECORD

Document Number 184-151-16

4/6/11 San Rafael

County of Marin, California

Brief Legal Description Lot 131 Marin Bay Unit 1 10 RM 78



CORNER TYPE

- Government Corner
- Meander
- Rancho
- Date of Survey Oct 31, 1995
- Control
- Property
- Other

COORDINATES (Optional)

N. _____
 E. _____
 Zone _____ Datum _____
 Elev. _____

Corner — Left as found Found and tagged Established Reestablished Rebuilt

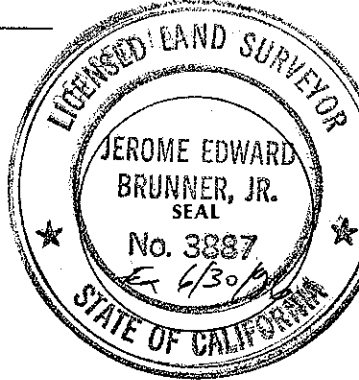
Identification and type of corner found: Evidence used to identify or procedure used to establish or reestablish the corner:
 Standard subdivision monuments in San Marino Dr.

- A description of the physical condition of the monument as found and as set or reset:
- Found old hub, set #5 rebar and cap LS 3887.
 - Found #3 rebar, set #5 rebar and cap LS 3887.
 - Set #5 rebar and cap LS 3887 on rear line 1' from... End fence post which falls on lot corner.

SURVEYOR'S STATEMENT

This Corner Record was prepared by me or under my direction in conformance with the Land Surveyors' Act on October 31 1995.

Signed [Signature] L.S. or R.C.E. Number LS 3887



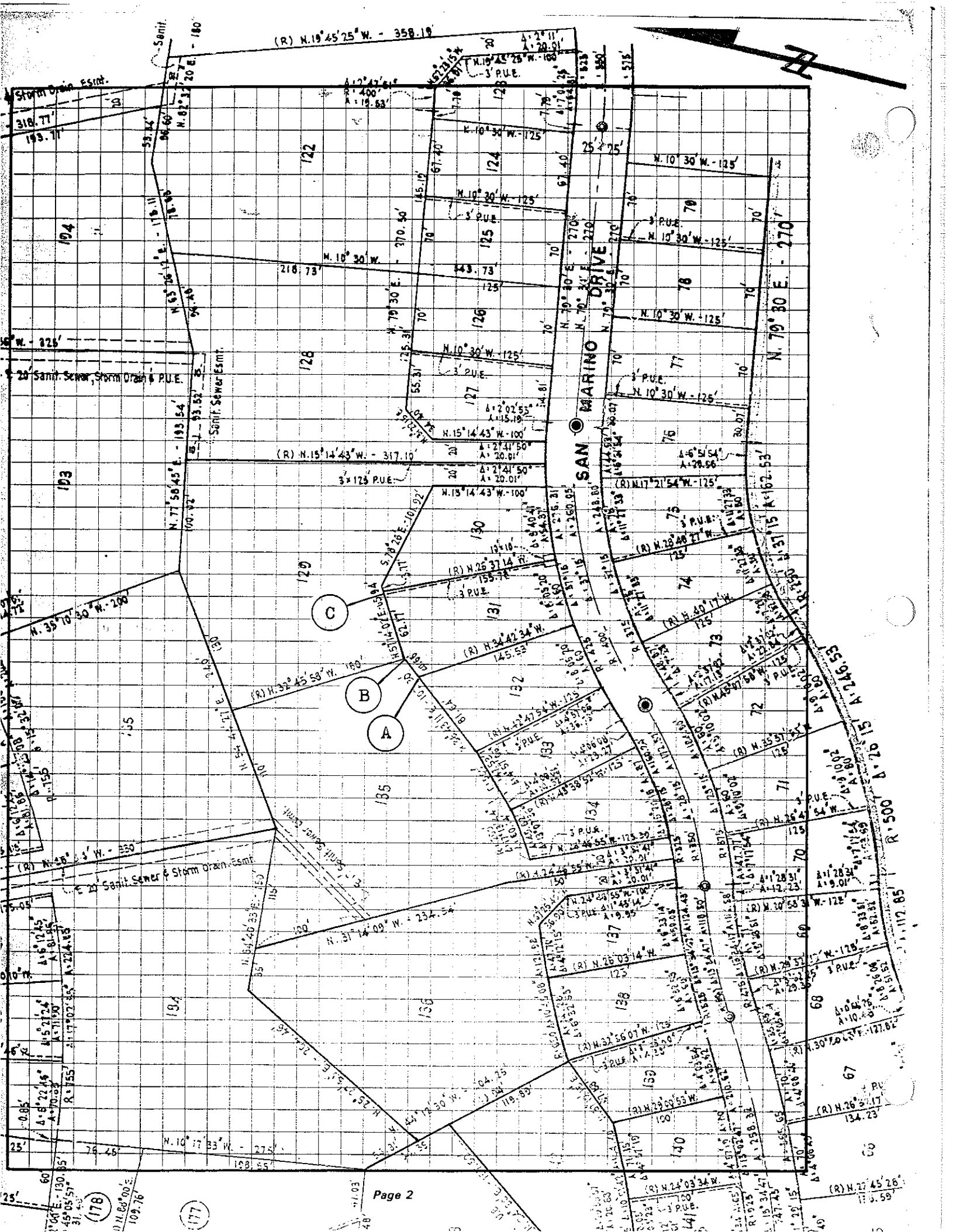
COUNTY SURVEYOR'S STATEMENT

This Corner Record was received December 19 1995 and examined and filed 12-20 1995.

Signed [Signature] Title DCS



County Surveyor's Comment _____



(R) N.19°45'25" W. - 358.19

Storm Drain Estmt.
318.71
193.71

Sanit. Sewer, Storm Drain & P.U.E.

Sanit. Sewer & Storm Drain Estmt.

SAN MARINO DRIVE

(C)

(B)

(A)

(178)

(177)

N. 10° 00' 00" E - 109.76

(R) N. 27° 45' 28" E - 175.59

(R) N. 26° 51' 17" E - 134.23

(R) N. 26° 51' 17" E - 134.23

(R) N. 26° 51' 17" E - 134.23

(R) N. 26° 51' 17" E - 134.23

(R) N. 26° 51' 17" E - 134.23

(R) N. 26° 51' 17" E - 134.23

(R) N. 26° 51' 17" E - 134.23

(R) N. 26° 51' 17" E - 134.23

(R) N. 26° 51' 17" E - 134.23

(R) N. 26° 51' 17" E - 134.23

(R) N. 26° 51' 17" E - 134.23

(R) N. 26° 51' 17" E - 134.23

(R) N. 26° 51' 17" E - 134.23

(R) N. 26° 51' 17" E - 134.23

(R) N. 26° 51' 17" E - 134.23

(R) N. 26° 51' 17" E - 134.23

(R) N. 26° 51' 17" E - 134.23

(R) N. 26° 51' 17" E - 134.23

(R) N. 26° 51' 17" E - 134.23

(R) N. 26° 51' 17" E - 134.23

(R) N. 26° 51' 17" E - 134.23

(R) N. 26° 51' 17" E - 134.23

(R) N. 26° 51' 17" E - 134.23

(R) N. 26° 51' 17" E - 134.23