

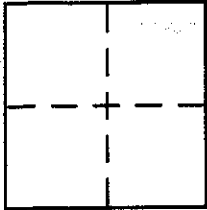
CORNER RECORD

Document Number A. P. N. 184-142-10

City of SAN RAFAEL

County of MARIN, California

Brief Legal Description #400 RIVIERA DR., Lot 203; 10 RM 78, APN 184-142-10



CORNER TYPE

Government Corner Control
Meander Property
Rancho Other
Date of Survey _____

COORDINATES (Optional)

N. _____
E. _____
Zone NAD27 NAD83
NAD83 Epoch _____
Elev. _____
Vert. Datum: NGVD29 NAVD88
Meas. Units: Metric Imperial

Corner - Left as found Found and tagged Established Reestablished Rebuilt

Identification and type of corner found: Evidence used to identify or procedure used to establish or reestablish the corner:

See Sketch on Back

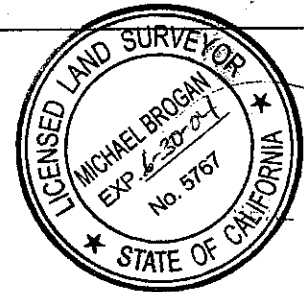
A description of the physical condition of the monument as found and as set or reset:

See Sketch on Back

SURVEYOR'S STATEMENT

This Corner Record was prepared by me or under my direction in conformance with the Land Surveyor's Act on Sept. 26 2002

Signed Michael A. Bryan P.L.S or R.C.E. No. LS 5767

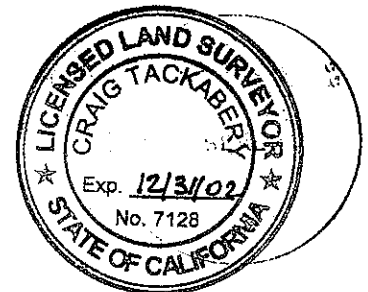


COUNTY SURVEYOR'S STATEMENT

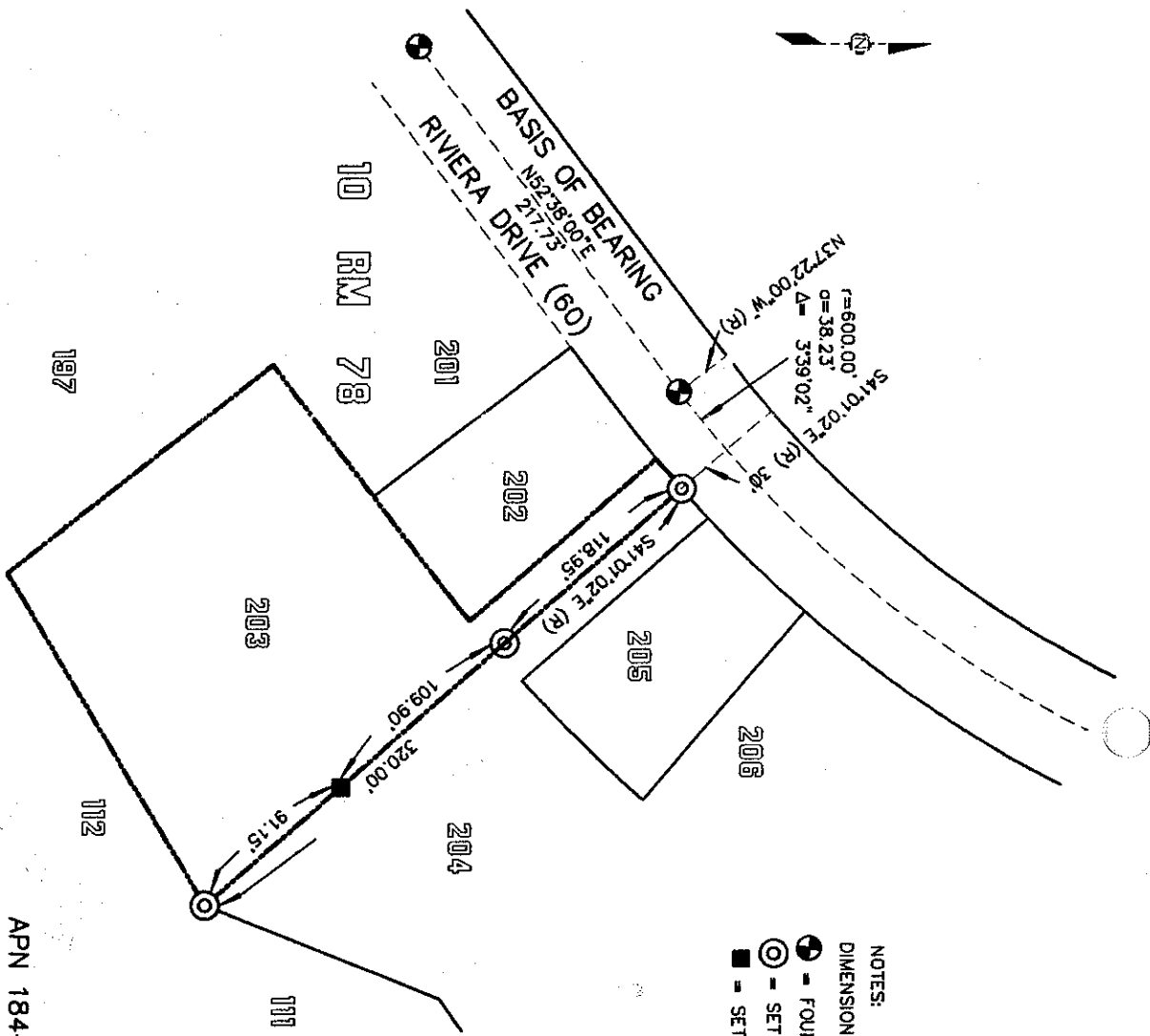
This Corner Record was received SEPTEMBER 30, 2002 and examined and filed OCTOBER 4, 2002

Signed Craig Tackabert P.L.S or R.C.E. No. 7128

Title DEPUTY



County Surveyor's Comment _____



- NOTES:
- ⊕ - FOUND SUBDIVISION MONUMENT 10 RM 78
 - ⊙ - SET 1/2" REBAR/CAP LS 5767
 - - SET 2X2 HUB/TACK

M. BROGAN AND ASSOCIATES, INC.
 319 MILLER AVENUE
 MILL VALLEY CA 94941
 JOB NO. 5552 SEPTEMBER 2002
 NOT TO SCALE

APN 184-142-10

CORNER RECORD
 LOT 203
 10 RM 78

