

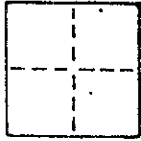
A.P. # 184-133-05

### CORNER RECORD

COUNTY OF MARIN T. \_\_\_\_\_ R. \_\_\_\_\_ MERIDIAN \_\_\_\_\_ CALIFORNIA

CORNER TYPE: GOVT. CORNER  MEANDER  RANCHO  CONTROL  OTHER

CORNER IDENTIFICATION — DATE OF VISIT \_\_\_\_\_ 19\_\_\_\_



CORNER — LEFT AS FOUND  FOUND AND TAGGED  REESTABLISHED OBLITERATED CORNER  REBUILT

PHYSICAL DESCRIPTION OF CORNER FOUND; EVIDENCE AND METHOD USED TO IDENTIFY OR REESTABLISH

Set a redwood hub with brass nail and tag embossed "LS 3775" at the northwesterly corner of Lot 24, from which a set witness concrete nail with brass tag embossed "LS 3775" in the southerly face of a concrete block wall bears S 4° 35'00" E 1.32' "Map of Peacock Manor" recorded in book 19 of Maps at page 46 per said map.

PHYSICAL DESCRIPTION OF MONUMENTS REBUILT OR PERPETUATED

As shown

J 1441

Continental Savings & Loan

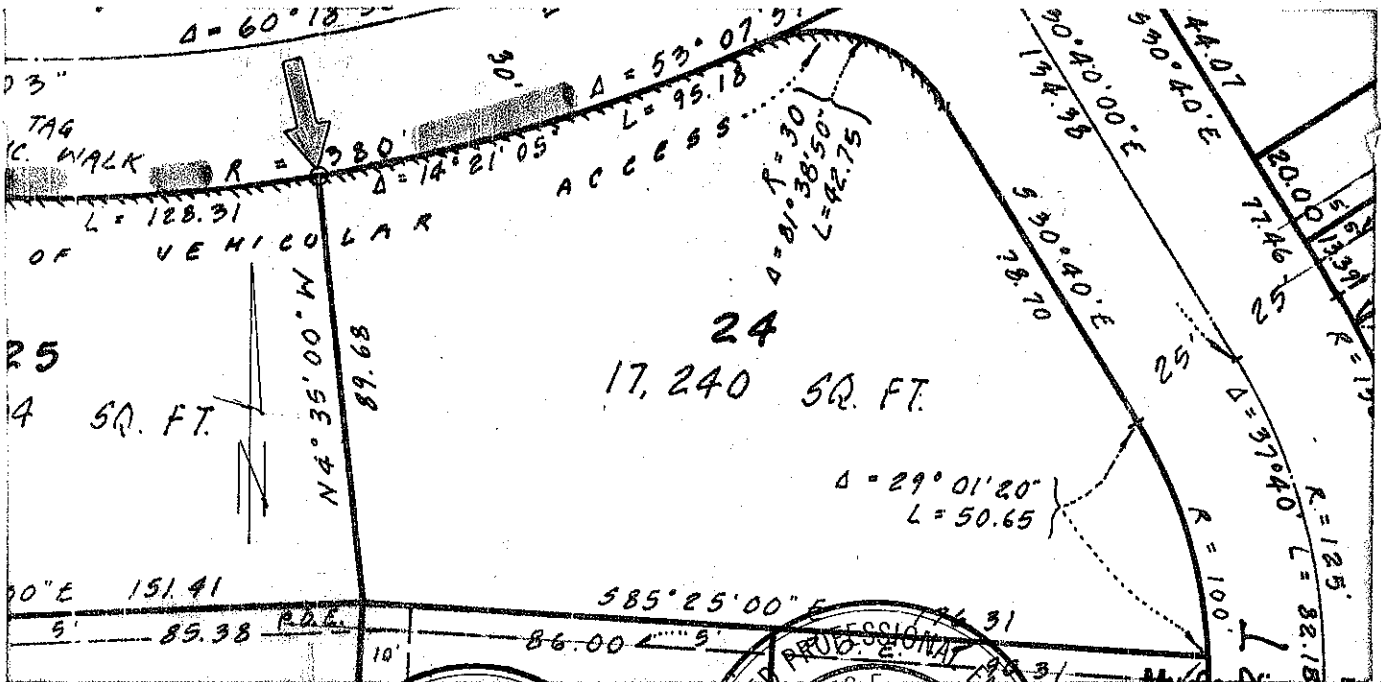
AP 184-133-05

CALIFORNIA COORDINATE SYSTEM ORDER: FIRST  SECOND  THIRD

STATIONS USED: NGS (USC & GS)  STATE  COUNTY  OTHER  STATION \_\_\_\_\_ STATION \_\_\_\_\_

ZONE \_\_\_\_\_ ELEVATION \_\_\_\_\_ NORTHINGS (Y) \_\_\_\_\_ EASTINGS (X) \_\_\_\_\_

SKETCH: (Include reference tie or witness points, remarks and topo of area)



THIS CORNER RECORD PREPARED BY ME UNDER MY DIRECTION IN CONFORMANCE WITH THE SURVEYORS ACT ON 4/16/86

SIGNED: Joseph Grillo L.S. or R.C.E. No. 3775

REGISTERED PROFESSIONAL ENGINEER: Charles E. Murphy No. 18652

COUNTY SURVEYOR'S CERTIFICATE: My Certificate Expires June 30 1989

THE CORNER RECORD WAS RECEIVED May 14 1986 AND EXAMINED AND FILED June 3 1986 BY Charles E. Murphy TITLE: Dep. Co. Surveyor

STATE OF CALIFORNIA

STATEMENT ON BACK OF SHEET

YES  NO