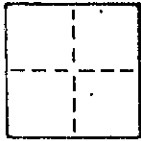


### CORNER RECORD

COUNTY OF MARIN T. \_\_\_\_\_ R. \_\_\_\_\_ MERIDIAN \_\_\_\_\_ CALIFORNIA

CORNER TYPE: GOV'T. CORNER  MEANDER  RANCHO  CONTROL  OTHER

CORNER IDENTIFICATION — DATE OF VISIT \_\_\_\_\_ 19\_\_\_\_



CORNER — LEFT AS FOUND  FOUND AND TAGGED  REESTABLISHED OBLITERATED CORNER  REBUILT

PHYSICAL DESCRIPTION OF CORNER FOUND; EVIDENCE AND METHOD USED TO IDENTIFY OR REESTABLISH

Set a 3/4" iron pipe with plastic plug embossed "LS 3775" at the southwesterly corner of Lot 9 of "Map of Peacock Manor" recorded in book 19 of Maps at page 46 per said Map.

PHYSICAL DESCRIPTION OF MONUMENTS REBUILT OR PERPETUATED

As shown

J 1441

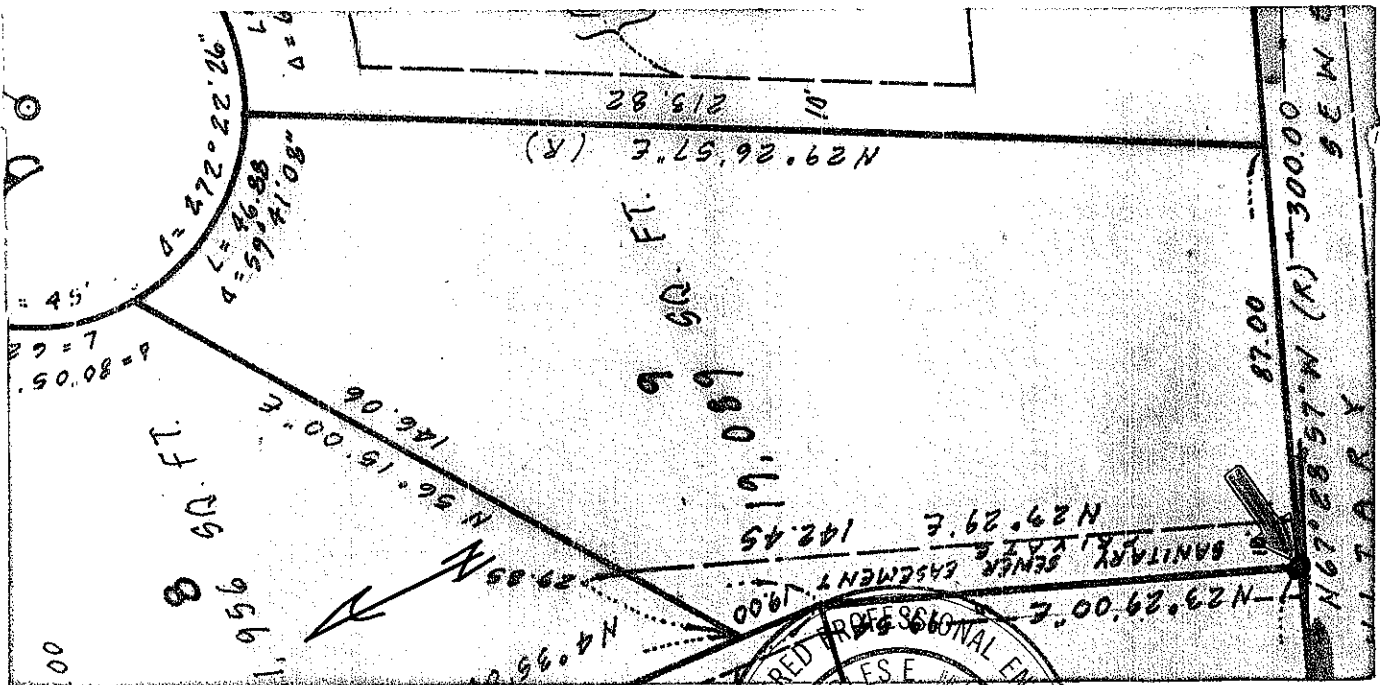
Continental Savings & Loan AP 184-132-16

CALIFORNIA COORDINATE SYSTEM ORDER: FIRST  SECOND  THIRD

STATIONS USED: NGS (USC & GS)  STATE  COUNTY  OTHER  STATION \_\_\_\_\_ STATION \_\_\_\_\_

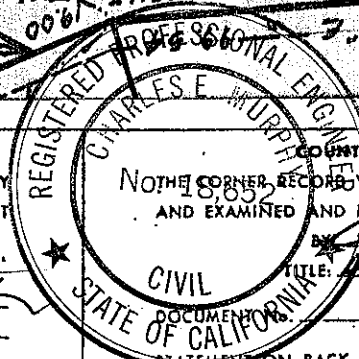
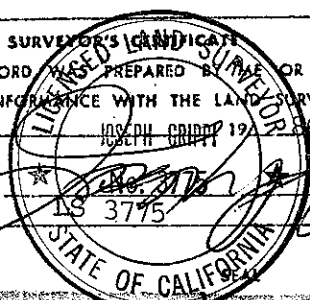
ZONE \_\_\_\_\_ ELEVATION \_\_\_\_\_ NORTHINGS (Y) \_\_\_\_\_ EASTINGS (X) \_\_\_\_\_

SKETCH: (Include reference tie or witness points, remarks and topo of area)



SURVEYOR'S CERTIFICATE  
 THIS CORNER RECORD WAS PREPARED BY \_\_\_\_\_ OR UNDER MY  
 DIRECTION IN CONFORMANCE WITH THE LAND SURVEYORS ACT  
 ON 3/17 1986

SIGNED: \_\_\_\_\_  
 L.S. or R.C.E. No.: LS 3775



My Certificate Expires  
 June 30, 1989

NOTICE: THIS CORNER RECORD WAS RECEIVED May 19 1986  
 AND EXAMINED AND FILED June 3 1986  
 TITLE: Pop. Co. Surveyor

STATEMENT ON BACK OF SHEET

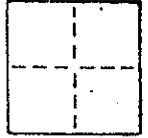
YES  NO

# CORNER RECORD

COUNTY OF MARIN T. \_\_\_\_\_ R. \_\_\_\_\_ MERIDIAN \_\_\_\_\_ CALIFORNIA

CORNER TYPE: GOV'T. CORNER  MEANDER  RANCHO  CONTROL  OTHER

CORNER IDENTIFICATION — DATE OF VISIT \_\_\_\_\_ 19\_\_\_\_



CORNER — LEFT AS FOUND  FOUND AND TAGGED  REESTABLISHED OBLITERATED CORNER  REBUILT

PHYSICAL DESCRIPTION OF CORNER FOUND; EVIDENCE AND METHOD USED TO IDENTIFY OR REESTABLISH

Set a 3/4" iron pipe with plastic plug embossed "LS 3775" at the southerly terminus of the course "N 4° 35' 00" E 19.00'" of Lot 9 of "Map of Peacock Manor" recorded in book 19 of Maps at page 46 per said Map.

PHYSICAL DESCRIPTION OF MONUMENTS REBUILT OR PERPETUATED

As shown

J 1441

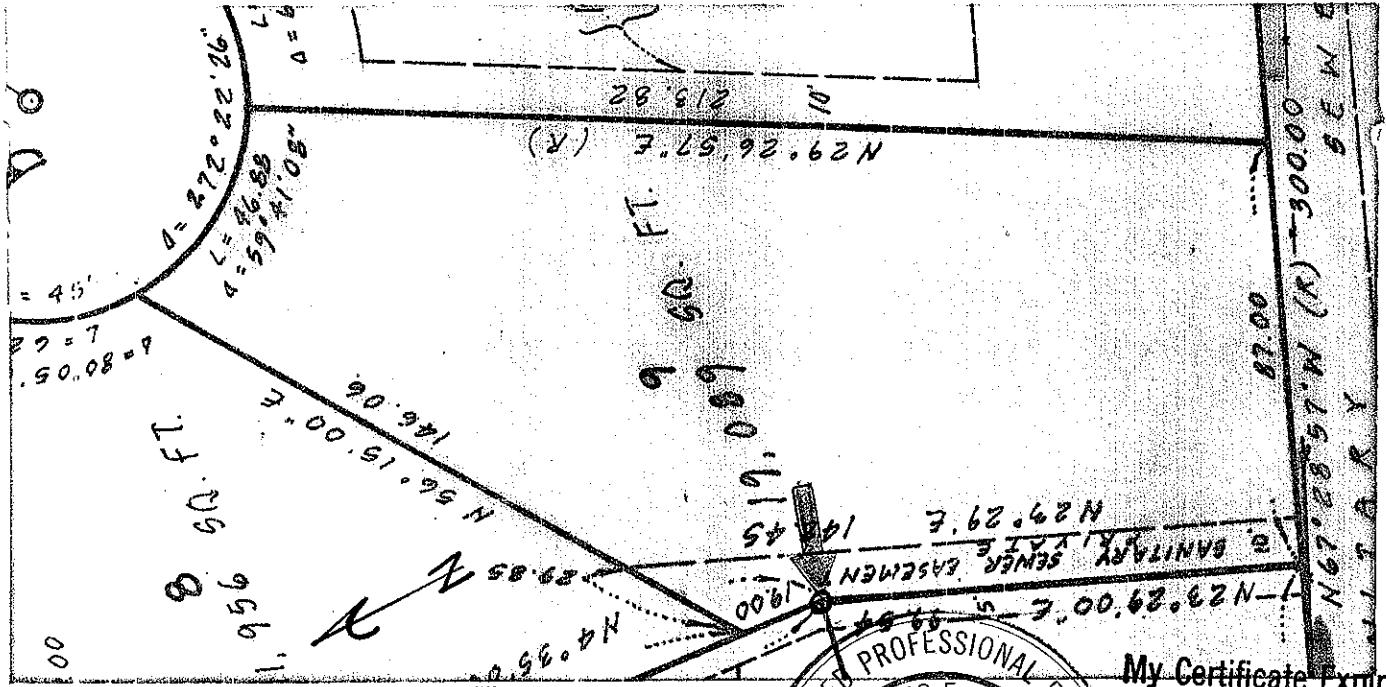
Continental Savings & Loan AP 124-132-16

CALIFORNIA COORDINATE SYSTEM ORDER: FIRST  SECOND  THIRD

STATIONS USED: NGS (USC & GS)  STATE  COUNTY  OTHER  STATION \_\_\_\_\_ STATION \_\_\_\_\_

ZONE \_\_\_\_\_ ELEVATION \_\_\_\_\_ NORTHINGS (Y) \_\_\_\_\_ EASTINGS (X) \_\_\_\_\_

SKETCH: (Include reference tie or witness points, remarks and topo of area)

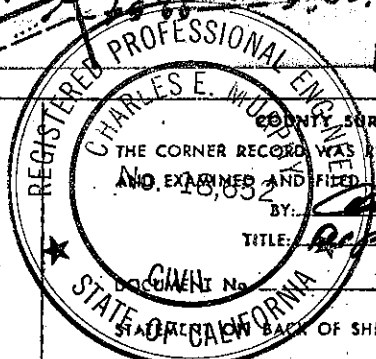


SURVEYOR'S CERTIFICATE

THIS CORNER RECORD WAS PREPARED BY ME UNDER MY DIRECTION IN CONFORMANCE WITH THE LAND SURVEYORS ACT ON 3/17

JOSEPH GRIPPI 88

SIGNED: \_\_\_\_\_  
L.S. or R.C.E. No. \_\_\_\_\_



My Certificate Expires June 30, 1989

COUNTY SURVEYOR'S CERTIFICATE

THE CORNER RECORD WAS RECEIVED May 14 1986

AND EXAMINED AND FILED June 3 1986

BY: Charles Munday

TITLE: Rep. Co. Surveyor

DOCUMENT No. \_\_\_\_\_

STATE OF CALIFORNIA

BACK OF SHEET

YES  NO

# CORNER RECORD

COUNTY OF MARIN T. \_\_\_\_\_ R. \_\_\_\_\_ MERIDIAN \_\_\_\_\_ CALIFORNIA

CORNER TYPE: GOVT. CORNER  MEANDER  RANCHO  CONTROL  OTHER

CORNER IDENTIFICATION — DATE OF VISIT \_\_\_\_\_ 19\_\_\_\_



CORNER — LEFT AS FOUND  FOUND AND TAGGED  REESTABLISHED OBLITERATED CORNER  REBUILT

PHYSICAL DESCRIPTION OF CORNER FOUND; EVIDENCE AND METHOD USED TO IDENTIFY OR REESTABLISH

Set a 3/4" iron pipe with plastic plug embossed "LS 3775" at the northerly corner of Lot 9 of "Map of Peacock Manor" recorded in book 19 of Maps at page 46 per said map.

PHYSICAL DESCRIPTION OF MONUMENTS REBUILT OR PERPETUATED

As shown

J 1441

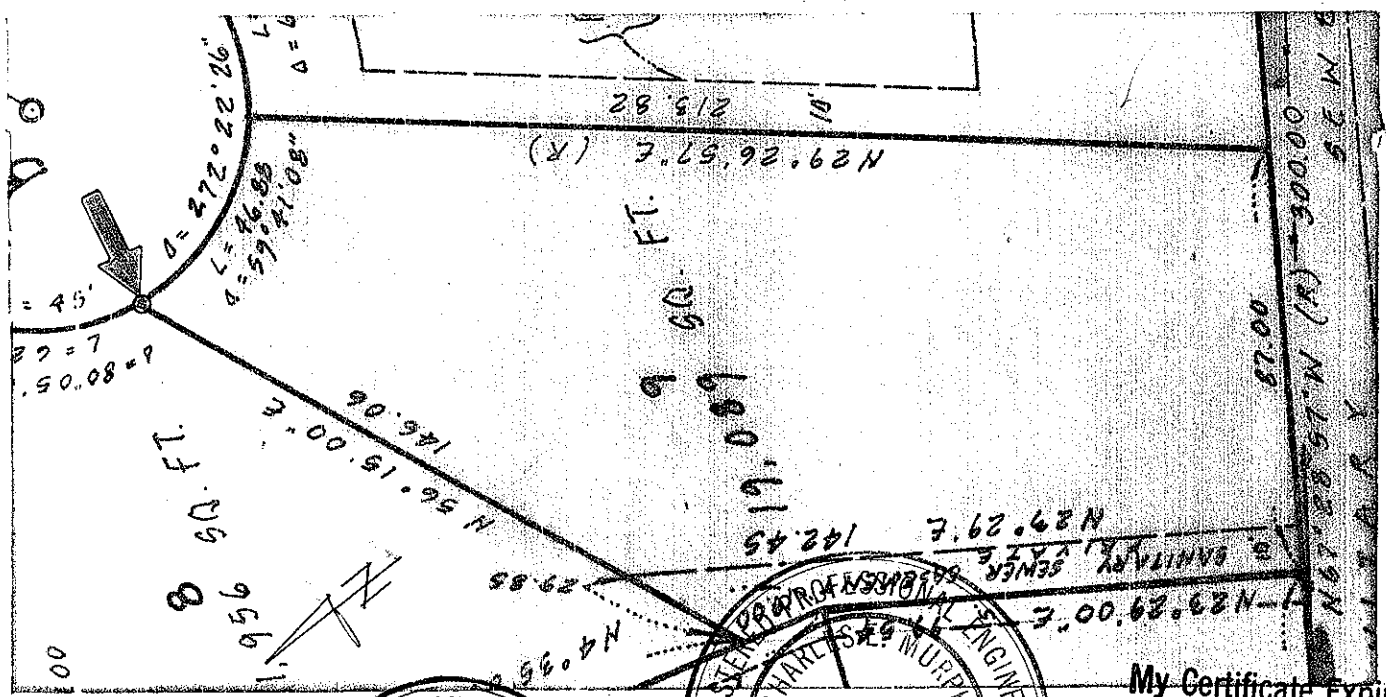
Continental Savings & Loan AP 184-132-16

CALIFORNIA COORDINATE SYSTEM ORDER: FIRST  SECOND  THIRD

STATIONS USED: NGS (USC & GS)  STATE  COUNTY  OTHER  STATION \_\_\_\_\_ STATION \_\_\_\_\_

ZONE \_\_\_\_\_ ELEVATION \_\_\_\_\_ NORTHINGS (Y) \_\_\_\_\_ EASTINGS (X) \_\_\_\_\_

SKETCH: (Include reference tie or witness points, remarks and topo of area)



THIS CORNER RECORD WAS PREPARED BY \_\_\_\_\_ OR UNDER MY DIRECTION IN CONFORMANCE WITH THE SURVEYORS ACT ON 4/16/86

SIGNED: \_\_\_\_\_

L.S. or P.C.E. No. \_\_\_\_\_

STATE OF CALIFORNIA

REGISTERED PROFESSIONAL ENGINEER

CHARLES S. MURPHY

CIVIL

STATE OF CALIFORNIA

DOCUMENT No. \_\_\_\_\_

My Certificate Expires **June 30 1989**

THE CORNER RECORD WAS RECEIVED May 14 1986 AND EXAMINED AND FILED June 3 1986

TITLE: Dep Co. Surveyor

STATEMENT ON BACK OF SHEET YES  NO

