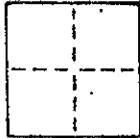


### CORNER RECORD

COUNTY OF MARIN T. \_\_\_\_\_ R. \_\_\_\_\_ MERIDIAN \_\_\_\_\_ CALIFORNIA

CORNER TYPE: GOVT. CORNER  MEANDER  RANCHO  CONTROL  OTHER

CORNER IDENTIFICATION — DATE OF VISIT \_\_\_\_\_ 19\_\_\_\_



CORNER — LEFT AS FOUND  FOUND AND TAGGED  REESTABLISHED OBLITERATED CORNER  REBUILT

PHYSICAL DESCRIPTION OF CORNER FOUND; EVIDENCE AND METHOD USED TO IDENTIFY OR REESTABLISH

Set a 3/4" iron pipe with plastic plug embossed "LS 3775" at the southeasterly corner of Lot 3 of "Map of Peacock Manor" recorded in book 19 of Maps at page 46 per said Map.

PHYSICAL DESCRIPTION OF MONUMENTS REBUILT OR PERPETUATED

As shown

J 1441

Continental Savings & Loan

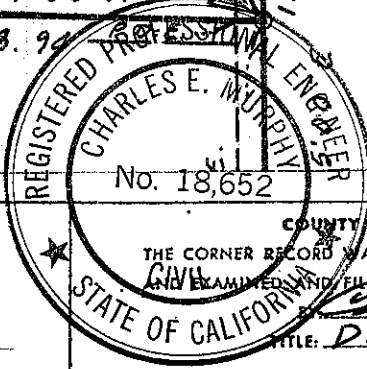
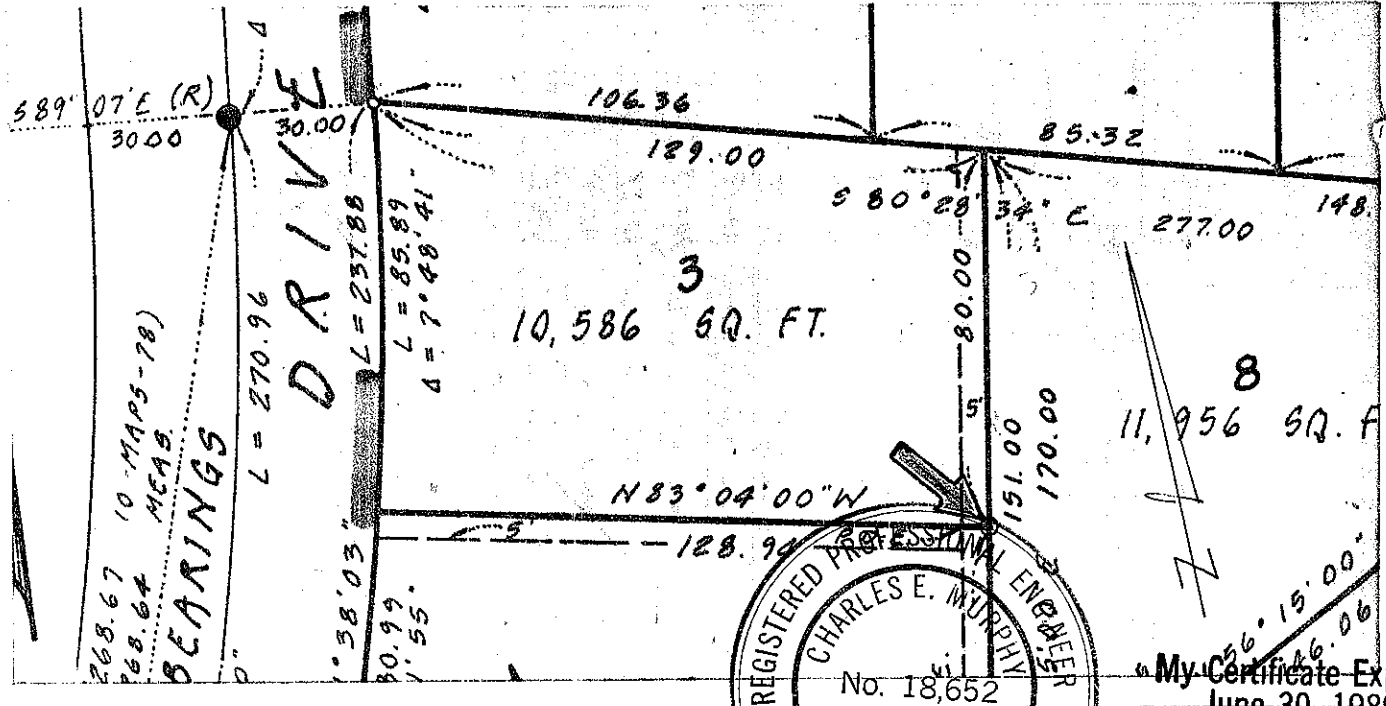
AP 184-132-10

CALIFORNIA COORDINATE SYSTEM ORDER: FIRST  SECOND  THIRD

STATIONS USED: NGS (USC & GS)  STATE  COUNTY  OTHER  STATION \_\_\_\_\_ STATION \_\_\_\_\_

ZONE \_\_\_\_\_ ELEVATION \_\_\_\_\_ NORTHINGS (Y) \_\_\_\_\_ EASTINGS (X) \_\_\_\_\_

SKETCH: (Include reference tie or witness points, remarks and topo of area)



My Certificate Expires June 30, 1989

SURVEYOR'S CERTIFICATE  
 THIS CORNER RECORD WAS PREPARED BY ME OR UNDER MY DIRECTION IN CONFORMANCE WITH THE SURVEYORS ACT ON 3/17 1986

SIGNED \_\_\_\_\_  
 L.S. or R.C.E. No. \_\_\_\_\_

COUNTY SURVEYOR'S CERTIFICATE  
 THE CORNER RECORD WAS RECEIVED May 14 1986 AND EXAMINED AND FILED June 3 1986  
 TITLE: Dep. Co. Surveyor

DOCUMENT No. \_\_\_\_\_  
 STATEMENT ON BACK OF SHEET YES  NO

# CORNER RECORD

COUNTY OF MARTIN T. \_\_\_\_\_ R. \_\_\_\_\_ MERIDIAN \_\_\_\_\_ CALIFORNIA

CORNER TYPE: GOVT. CORNER  MEANDER  RANCHO  CONTROL  OTHER

CORNER IDENTIFICATION -- DATE OF VISIT \_\_\_\_\_ 19\_\_\_\_



CORNER -- LEFT AS FOUND  FOUND AND TAGGED  REESTABLISHED OBLITERATED CORNER  REBUILT

PHYSICAL DESCRIPTION OF CORNER FOUND; EVIDENCE AND METHOD USED TO IDENTIFY OR REESTABLISH

Set a 3/4" iron pipe with plastic plug embossed "IS 3775" at the southwesterly corner of Lot 3 of "Map of Peacock Manor" recorded in book 19 of Maps at page 46 per said Map.

PHYSICAL DESCRIPTION OF MONUMENTS REBUILT OR PERPETUATED

As shown  
J 1441

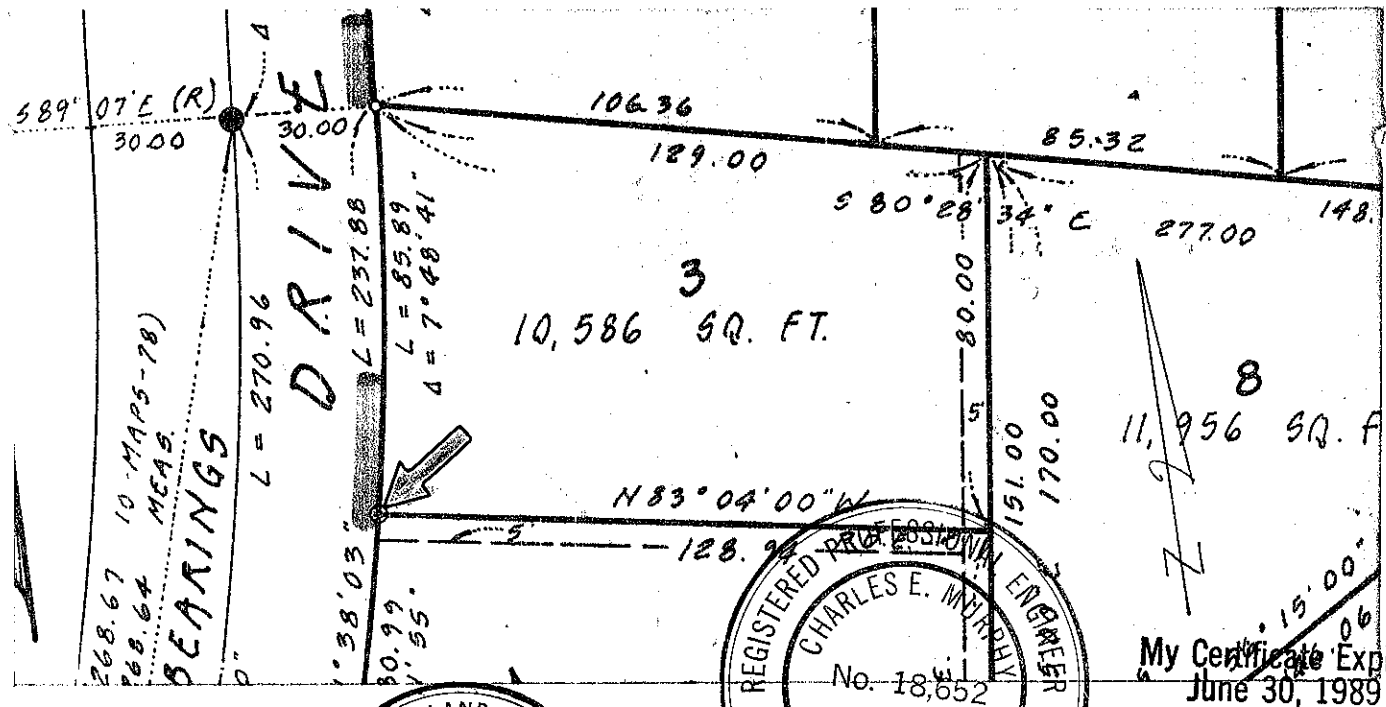
Continental Savings & Loan AP 184-132-10

CALIFORNIA COORDINATE SYSTEM ORDER: FIRST  SECOND  THIRD

STATIONS USED: NGS (USC & GS)  STATE  COUNTY  OTHER  STATION \_\_\_\_\_ STATION \_\_\_\_\_

ZONE \_\_\_\_\_ ELEVATION \_\_\_\_\_ NORTHINGS (Y) \_\_\_\_\_ EASTINGS (X) \_\_\_\_\_

SKETCH: (Include reference tie or witness points, remarks and topo of area)



SURVEYOR'S CERTIFICATE

THIS CORNER RECORD WAS PREPARED BY \_\_\_\_\_ OR UNDER MY DIRECTION IN CONFORMANCE WITH THE LAND SURVEYORS ACT ON 3/17 1986

SIGNED: [Signature] No. 3775

L.S. or R.C.E. No. IS 3775

STATE OF CALIFORNIA

COUNTY SURVEYOR'S CERTIFICATE

THE CORNER RECORD WAS RECEIVED May 14 1986 AND EXAMINED AND FILED June 3 1986

BY: Charles E. Murphy

TITLE: Dep. Co. Surveyor

DOCUMENT No. \_\_\_\_\_

STATEMENT ON BACK OF SHEET YES  NO