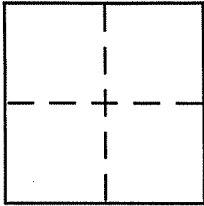


CORNER RECORD

Document Number APN 184-041-21
County of MARIN, California

City of SAN RAFAEL

Brief-Legal-Description LOT 38-A PER 10 P.M. 13



CORNER TYPE

Government Corner Control
Meander Property
Rancho Other
Date of Survey 6-19-07

COORDINATES (Optional)

N. _____
E. _____
Zone _____ NAD27 NAD83
NAD83 Epoch _____
Elev. _____
Vert. Datum: NGVD29 NAVD88
Meas. Units: Metric Imperial

Corner - Left as found Found and tagged Established Reestablished Rebuilt

Identification and type of corner found: Evidence used to identify or procedure used to establish or reestablish the corner:

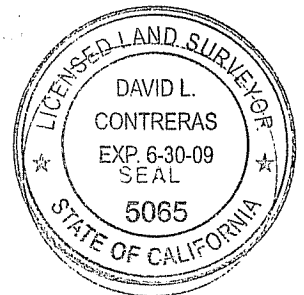
= SEE OVER =

A description of the physical condition of the monument as found and as set or reset:

= SEE OVER =

SURVEYOR'S STATEMENT

This Corner Record was prepared by me or under my direction in conformance with the Land Surveyor's Act on DEC. 16 2007
Signed David Contreras P.L.S. or R.C.E. No. 5065

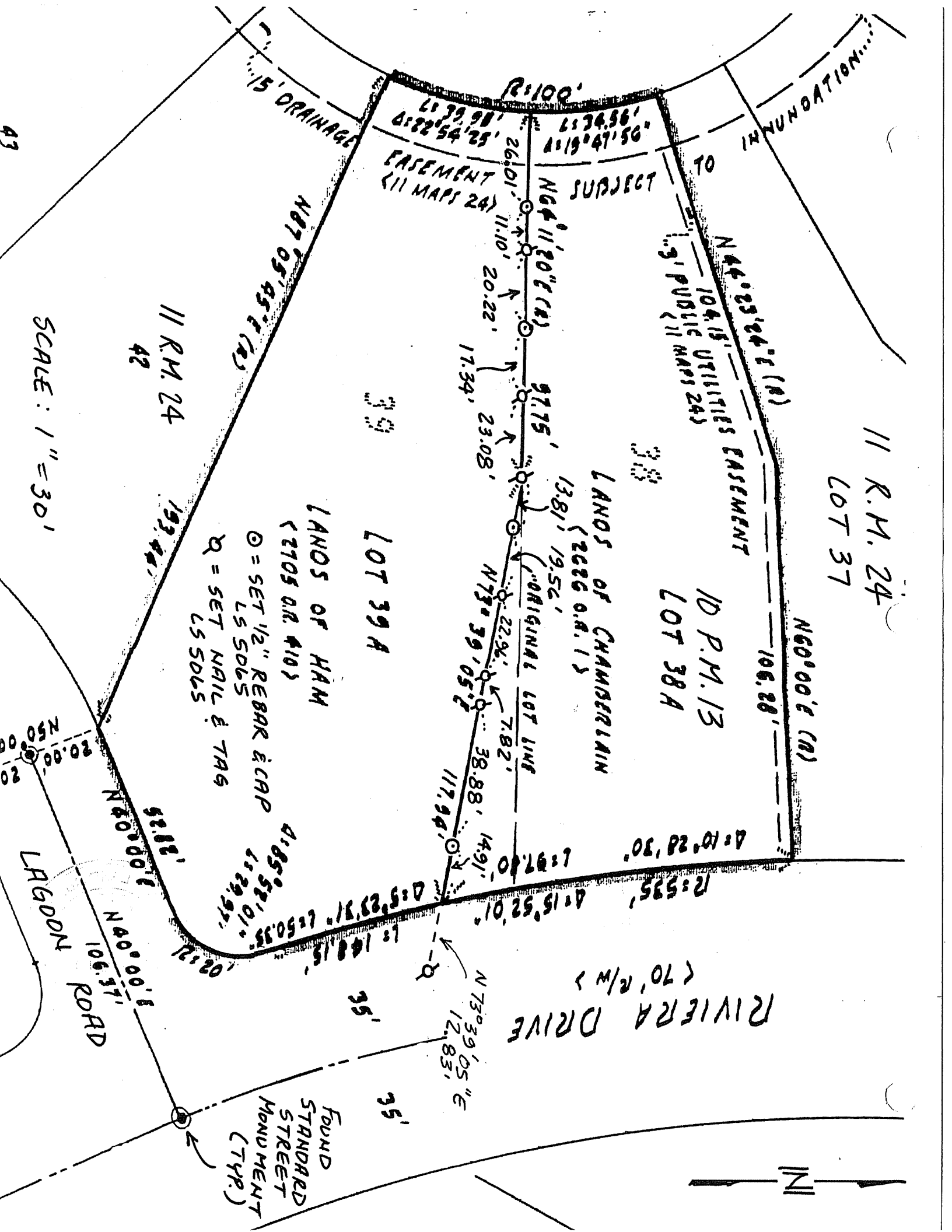


COUNTY SURVEYOR'S STATEMENT

This Corner Record was received DECEMBER 19, 2007
and examined and filed JANUARY 15, 2008
Signed _____ P.L.S. or R.C.E. No. 7128
Title COUNTY SURVEYOR



County Surveyor's Comment _____



11 R.M. 24
LOT 37

10 P.M. 13
LOT 38A

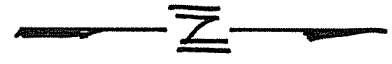
LOT 39A

LANDS OF HAM
(2705 O.R. #10)

LANDS OF CHAMBERLAIN
(2626 O.R. 1)

⊙ = SET 1/2" REBAR & CRP
LS 5065
⊚ = SET NAIL & TAG
LS 5065

SCALE: 1" = 30'



FOUND
STANDARD
STREET
MONUMENT
(TYP.)

LAGDON
ROAD

11 R.M. 24
42

15' DRAINAGE

N 44° 23' 24" E (R)
104.15' UTILITIES EASEMENT
(11 MAPS 24)

EASEMENT
(11 MAPS 24)

SUBJECT

R:100'

L: 39.98'
A: 82° 54' 25"

L: 34.56'
A: 19° 47' 56"

N 64° 11' 20" E (R)

26.01'
11.10'
20.22'

97.75'

17.34'
23.08'

N 73° 39' 05" E

117.94'

14.91'

N 73° 39' 05" E

12.83'

A: 10° 28' 30"

A: 15° 52' 01"

A: 5° 23' 31"

A: 85° 52' 01"

A: 29' 97"

L: 148.15'

L: 148.15'

L: 148.15'

L: 148.15'

L: 148.15'

L: 148.15'

L: 148.15'

L: 148.15'

L: 148.15'

L: 148.15'

L: 148.15'

L: 148.15'

L: 148.15'

L: 148.15'

L: 148.15'

L: 148.15'

L: 148.15'

L: 148.15'

L: 148.15'

L: 148.15'

L: 148.15'

L: 148.15'

L: 148.15'

L: 148.15'

L: 148.15'

L: 148.15'

L: 148.15'

L: 148.15'

L: 148.15'

L: 148.15'

L: 148.15'

L: 148.15'

L: 148.15'

L: 148.15'

L: 148.15'

L: 148.15'

L: 148.15'

L: 148.15'

L: 148.15'

L: 148.15'

L: 148.15'

L: 148.15'

L: 148.15'

L: 148.15'

L: 148.15'

L: 148.15'

L: 148.15'

L: 148.15'

L: 148.15'

L: 148.15'

L: 148.15'

L: 148.15'

L: 148.15'

L: 148.15'

L: 148.15'

L: 148.15'

L: 148.15'

L: 148.15'

L: 148.15'

L: 148.15'

L: 148.15'

L: 148.15'

L: 148.15'

L: 148.15'

L: 148.15'

L: 148.15'

L: 148.15'

L: 148.15'

L: 148.15'

L: 148.15'

L: 148.15'

L: 148.15'

L: 148.15'

L: 148.15'

L: 148.15'

L: 148.15'

L: 148.15'

L: 148.15'

L: 148.15'

L: 148.15'

L: 148.15'

L: 148.15'

L: 148.15'

L: 148.15'

L: 148.15'

L: 148.15'

L: 148.15'

L: 148.15'

L: 148.15'

L: 148.15'

L: 148.15'

L: 148.15'

L: 148.15'

L: 148.15'

L: 148.15'

L: 148.15'

L: 148.15'

L: 148.15'

L: 148.15'