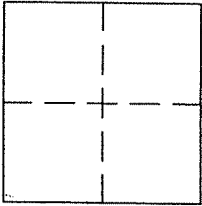


CORNER RECORD
CITY OF SAN RAFAEL

DOCUMENT NUMBER 180-430-07
COUNTY OF MARIN, CALIFORNIA

BRIEF LEGAL DESCRIPTION LOT7, 19 RM 98, MAP OF NORTHVIEW



CORNER TYPE

GOVERNMENT CORNER ☐ CONTROL ☐
MEANDER ☐ PROPERTY ☒
RANCHO ☐ OTHER ☐
DATE OF SURVEY DECEMBER 29, 2011

COORDINATES (OPTIONAL)

N. _____
E. _____
ZONE _____ NAD27 ☐ NAD83 ☐
NAD83 EPOCH _____
ELEV. _____
VERT. DATUM: NGVD29 ☐ NAVD88 ☐
MEAS. UNITS: METRIC ☐ IMPERIAL ☐

CORNER - LEFT AS FOUND ☐ FOUND AND TAGGED ☐ ESTABLISHED ☒ REESTABLISHED ☐ REBUILT ☐

IDENTIFICATION AND TYPE OF CORNER FOUND: EVIDENCE USED TO IDENTIFY OR PROCEDURE USED TO ESTABLISH OR REESTABLISH THE
FND STD. ST. MONUMENTS AND 3/4" IP, RCE 18221, AS SHOWN ON 19 RM 98 AND ON REVERSE,
UNABLE TO OPEN MON. @ CUL-DE-SAC. POSITION DETERMINED BY (4) FOUND PK NAIL
STRADDLERS.

A DESCRIPTION OF THE PHYSICAL CONDITION OF THE MONUMENT AS FOUND AND AS SET OR RESET:
SET REBAR & CAP, PLS 5296 AS SHOWN ON REVERSE

SURVEYOR'S STATEMENT

THIS CORNER RECORD WAS PREPARED BY ME OR UNDER MY DIRECTION IN CONFORMANCE WITH
THE LAND SURVEYOR'S ACT ON JANUARY 9, 2012

SIGNED [Signature] P.L.S. OR R.C.E. No. PLS 5296

COUNTY SURVEYOR'S STATEMENT

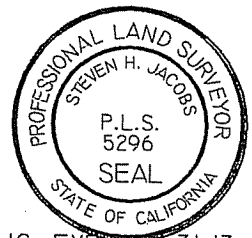
THIS CORNER RECORD WAS RECEIVED JANUARY 17, 2012

AND EXAMINED AND FILED FEBRUARY 15, 2012

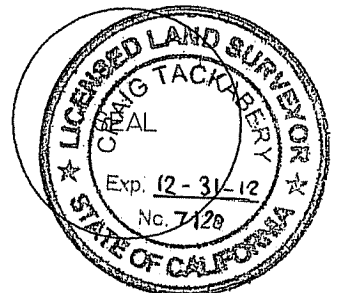
SIGNED [Signature] P.L.S. OR R.C.E. No. 7128

TITLE COUNTY SURVEYOR

COUNTY SURVEYOR'S COMMENT _____



LIC. EXP. 12-31-13

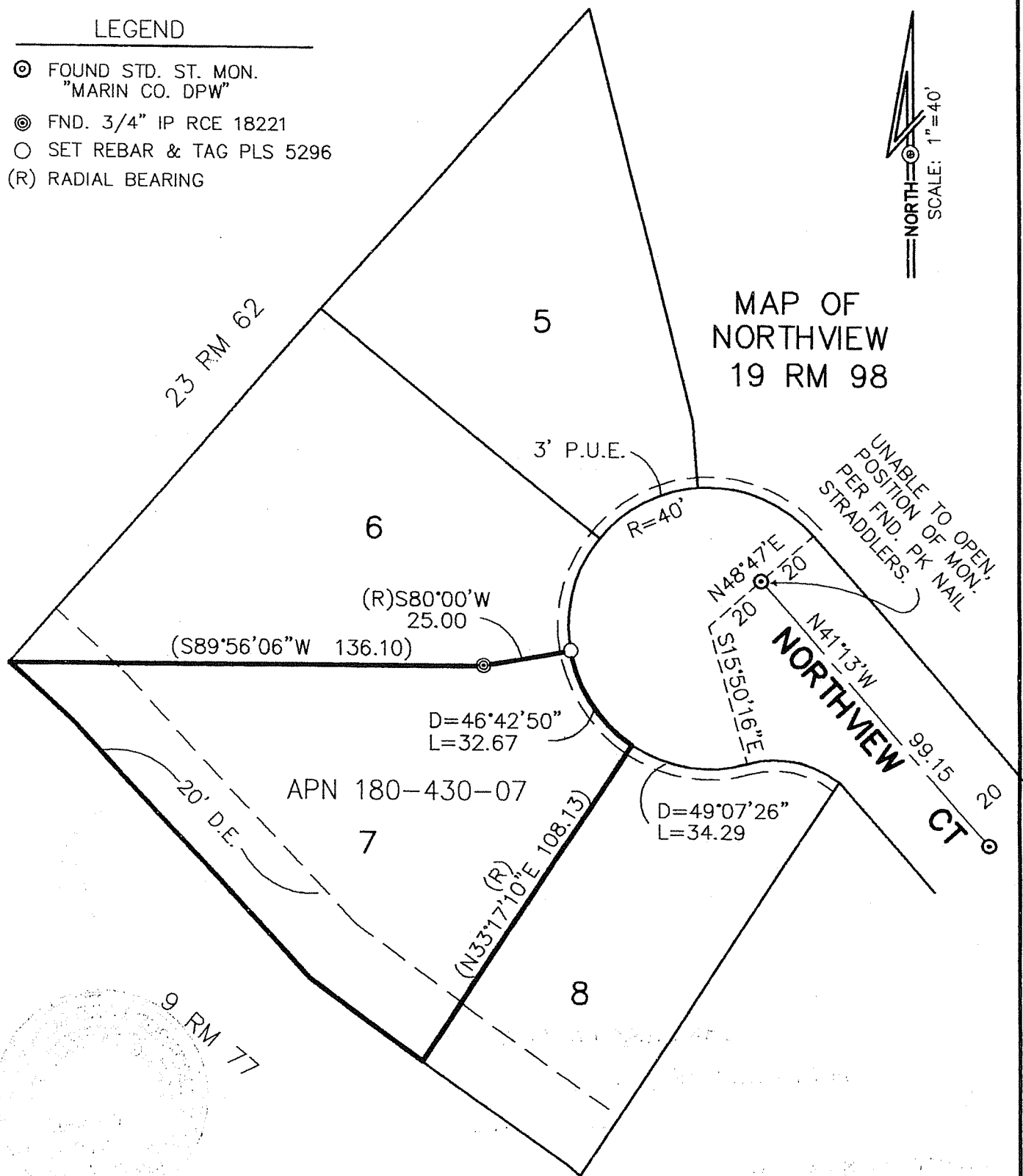


LEGEND

- ⊙ FOUND STD. ST. MON.
"MARIN CO. DPW"
- ⊙ FND. 3/4" IP RCE 18221
- SET REBAR & TAG PLS 5296
- (R) RADIAL BEARING



MAP OF NORTHVIEW 19 RM 98



JACOBS LAND SURVEYING
P.O. BOX 7829
COTATI, CA. 94931
415 454-2235

JOB NO.11-1309-M FB#68
DWG FILE: 2012/JAN/NGUYEN