

6852

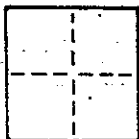
## CORNER RECORD

1/1

COUNTY OF Marin T.                      R.                                           MERIDIAN CALIFORNIA

CORNER TYPE: GOV'T. CORNER ☐ MEANDER ☐ RANCHO ☐ CONTROL ☐ OTHER ☐

CORNER IDENTIFICATION — DATE OF VISIT \_\_\_\_\_ 19\_\_\_\_



CORNER — LEFT AS FOUND ☐ FOUND AND TAGGED ☐ REESTABLISHED OBLITERATED CORNER ☐ REBUILT ☐

PHYSICAL DESCRIPTION OF CORNER FOUND: EVIDENCE AND METHOD USED TO IDENTIFY OR REESTABLISH

- Found iron pipe monument on centerline prod. of lot 6/5 on Sydney Court.

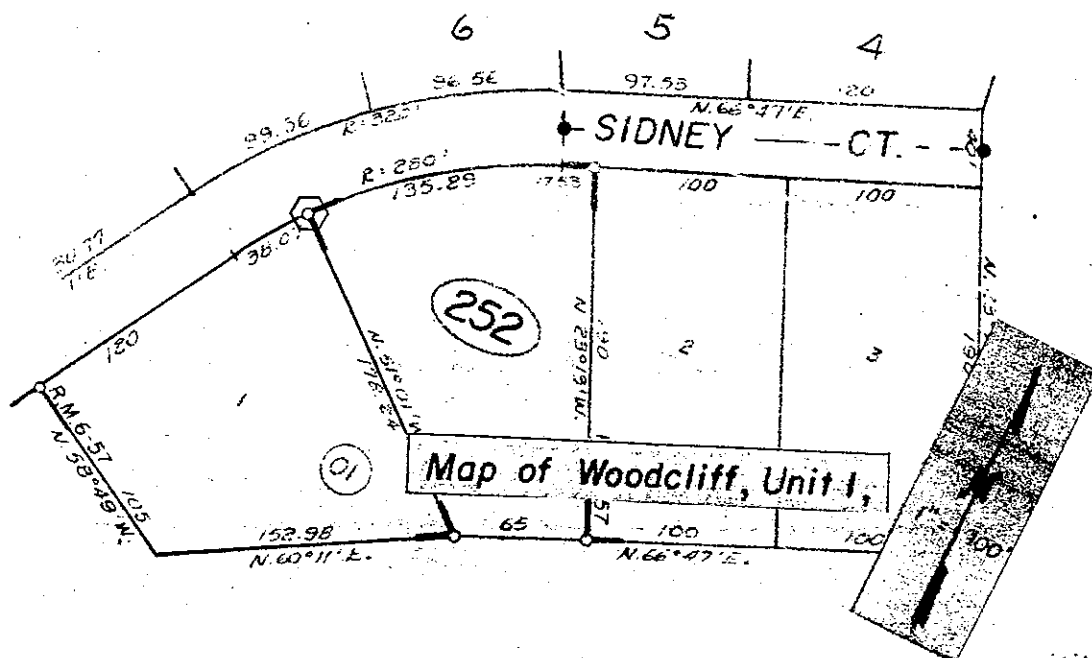
6RM57

PHYSICAL DESCRIPTION OF MONUMENTS REBUILT OR PERPETUATED

- Set hub and tag L.S. 3887

CALIFORNIA COORDINATE SYSTEM ORDER: FIRST ☐ SECOND ☐ THIRD ☐  
STATIONS USED: NGS (USC & GS) ☐ STATE ☐ COUNTY ☐ OTHER ☐ STATION \_\_\_\_\_ STATION \_\_\_\_\_  
ZONE \_\_\_\_\_ ELEVATION \_\_\_\_\_ NORTHINGS (Y) \_\_\_\_\_ EASTINGS (X) \_\_\_\_\_

**SKETCH:** (Include reference tie or witness points, remarks and topo of area)



SURVEYOR'S CERTIFICATE  
 THIS "CORNER RECORD" WAS PREPARED BY ME OR UNDER MY  
 DIRECTION IN CONFORMANCE WITH THE LAND SURVEYORS ACT  
 ON Dec. 14 1989  
 JEROME EDWARD  
 BRUNNER, JR.  
 SIGNED: *[Signature]*  
 L.S. or R.C.E. No.: 3887

COUNTY SURVEYOR'S CERTIFICATE

THE CORNER RECORD WAS RECORDED RELIABLY \_\_\_\_\_ 1988

AND EXAMINED AND FILED \_\_\_\_\_

BY: \_\_\_\_\_ 6-30-72

TITLE: \_\_\_\_\_ (10-3-88) (C)

DOCUMENT No. \_\_\_\_\_

STATEMENT ON BACK OF SHEET